



FOR SALE

STYLISH AND ACCOMMODATING FAMILY HOME IN A QUIET COURT LOCATION

Welcome to your dream home in beautiful Greensborough, (Distant view or Big Lookout, traditional meaning of Weemala).

Step inside this tastefully decorated and thoughtfully designed home and you quickly start to appreciate the sheer size and feeling of space within this quality property.

Sitting on a 948 m2 landscaped elevated block of land, this quality multi-level 4 bedroom, 2 living areas, 2 bathroom property offers everything a growing family could desire.

Upon entry to the lounge/living room you notice a fabulous kitchen area with quality cabinetry and central hub to cook up a storm for your family and friends, complete with plenty of cupboards and stone bench space, quality Westinghouse Stainless steel wall oven and Bosch 6 burner cooktop all while keeping you engaged with your family and friends.

A formal dining room for those special occasions and separate lounge room with sliding door access to the substantial under cover deck area.

You can admire your garden and deck from the kitchen and lounge too. This is one of the most pleasing aspects of this incredible home.

You will be the envy of your family and friends as you entertain or just relax on the large deck overlooking the easy care gardens and lawn area, this creates the perfect place to enjoy quality time together.

The master bedroom is spacious, and light filled, with double robes and ensuite and amazing views. The additional Bedrooms are fitted with built in robes ceiling fans and quality carpets, and yes more views including Melbourne City.

A double garage to accommodate your vehicles, plus a studio or workshop to run your business, hobbies or storage, endless possibilities.

The ducted heating, Split system Air conditioner and Evaporative cooling keep the home comfortable all year.

- 2 Living areas
- 4 Bedrooms
- Spacious master bedroom
- Formal dining
- Formal lounge
- Large deck entertainment area
- Easy care gardens

4 BED | 2 BATH | 2 CAR

PRICE:

\$1,000,000 - \$1,100,000

OPEN FOR INSPECTION:

Jul 5 at 1:00pm - 1:30pm

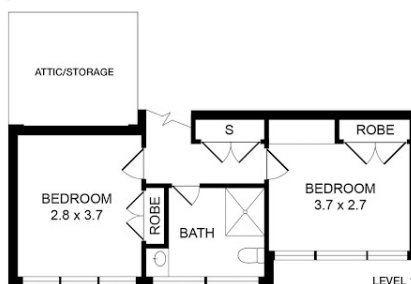
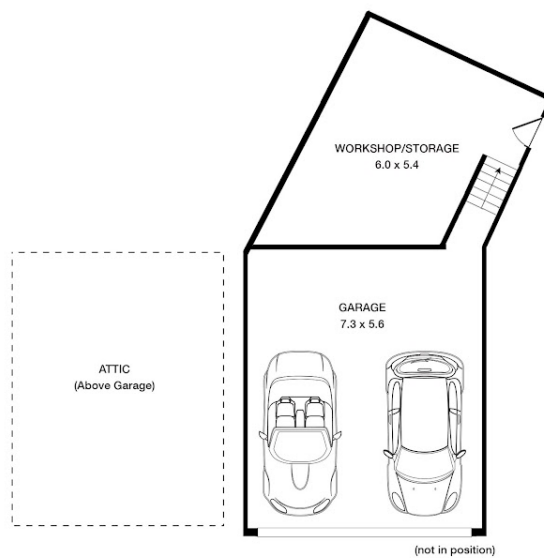
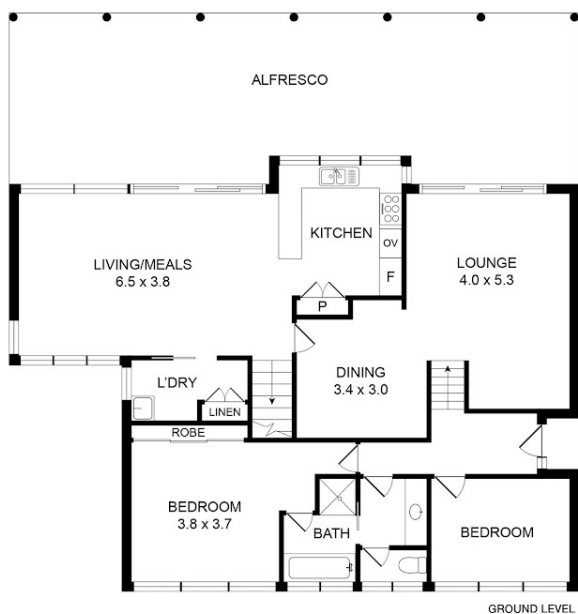


Wayne Hutchinson

0424370940

wayne@waynehutchinson.com.au

waynehutchinson.com.au



Disclaimer: Floor plan is represented as guide only.

Disclaimer: Please note this floor plan is for marketing purposes and is to be used as a guide only. All dimensions are estimates only and may not be exact measurements.