



FOR SALE

SPACIOUS FAMILY HAVEN WITH MODERN COMFORT CONVENIENCE & STYLE

Discover your slice of suburban serenity in this charming three-bedroom home, perfectly positioned in the evolving neighbourhood of Salisbury North. Set on a generous 592 square meter block, this well-maintained residence offers the perfect blend of comfort and convenience for growing families or smart investors.

Step inside to experience the thoughtfully designed 137 square meter floor plan that maximizes both space and functionality. The heart of the home features a welcoming lounge area, creating the perfect setting for family gatherings and relaxed entertaining. Modern comfort is assured with reverse cycle air conditioning, keeping you cozy throughout Adelaide's seasonal changes.

The three bedrooms are well-appointed, the main with His & Hers walk-in robes which take you through to the 2 way - main bathroom. The living spaces are enhanced by contemporary conveniences including:

- Broadband internet connectivity
- Pay TV access
- Quality built-in features throughout
- Reverse cycle air conditioning for year-round comfort

The outdoor space is where this property truly shines, offering multiple opportunities for entertainment and relaxation:

- Spacious, secure outdoor entertainment area
- Fully fenced yard providing peace of mind for families with children or pets
- Well-maintained gardens with plenty of room for green thumbs
- Secure parking and a carport
- Extra parking across the road for visitors

Location advantages are abundant at 31 Hissar Avenue, with the property positioned in an increasingly popular pocket of Salisbury North. The area has undergone significant evolution since its establishment in the 1950s, transforming into a vibrant part of Adelaide's northern suburbs with a strong community focus.

3 BED | 1 BATH | 2 CAR

PRICE:

\$649,000 to \$669,000

OPEN FOR INSPECTION:

N/A



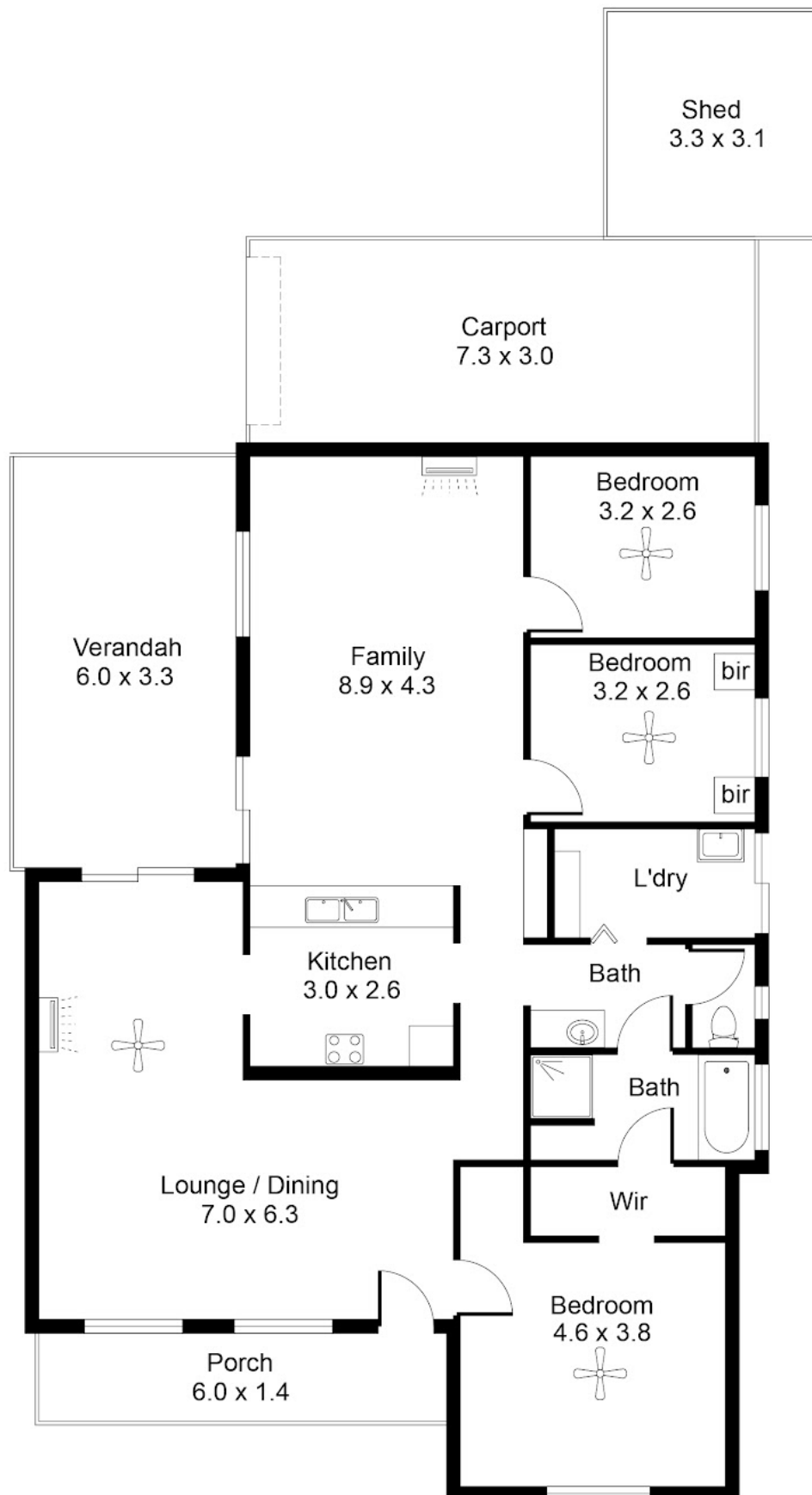
Alan Bickley

0421787996

alan.bickley@atrealty.com.au

www.atrealty.com.au

RLA: 269823



Disclaimer: Please note this floor plan is for marketing purposes and is to be used as a guide only. All dimensions are estimates only and may not be exact measurements.

Whilst every attempt has been made to ensure the accuracy of the floor plan contained here, measurements of doors, windows, rooms and any other items are approximate and no responsibility is taken for any error, omission, or misstatement. This plan is for illustrative purposes only and should be used as such by any prospective purchaser.

Alan Bickley
0421787996

alan.bickley@atrealty.com.au

www.atrealty.com.au

