

# 19 KELLERMAN DRIVE ST HELENS PARK



## FOR SALE

### MODERN FAMILY OASIS IN ST HELENS PARK – STYLE, SPACE & SERENITY!

Welcome to your dream home. A stunningly renovated 4-bedroom retreat in the heart of peaceful, family-friendly Saint Helens Park. Thoughtfully updated with a perfect blend of style, space, and comfort, this move-in-ready haven is where your next chapter begins.

Step inside and be instantly impressed by the open-plan living and dining areas, drenched in natural light and designed for easy living. The show-stopping kitchen is a true centerpiece, featuring luxurious stone benchtops, premium appliances, and an abundance of storage — the ultimate space for both everyday meals and unforgettable gatherings.

Love to entertain? The seamless indoor-outdoor flow leads you to a spacious alfresco area and a private, low-maintenance backyard — ideal for summer barbecues, relaxed evenings, or watching the kids play safely in the fully fenced yard.

This home is packed with features that elevate both lifestyle and functionality:

- Ducted air conditioning for year-round comfort
- Security alarm system with cameras for peace of mind
- Handy attic storage accessed via the games room
- Side access and a large shed (4.7m x 3.9m) for added convenience
- Solar system (4.27 kWp) for energy efficiency
- Fully fenced front yard enhancing safety and privacy

Enjoy the ease of nearby public transport and the comfort of multiple living zones perfect for growing families or hosting guests.

This is more than just a house, it's a home that's been designed for modern family living, where every detail has been carefully considered. Don't miss your chance to secure this incredible property and start making lasting memories today.

Agency Central believes that all the information contained herein is true & correct to the best of our ability however we encourage all interested parties to carry out their own enquiries.

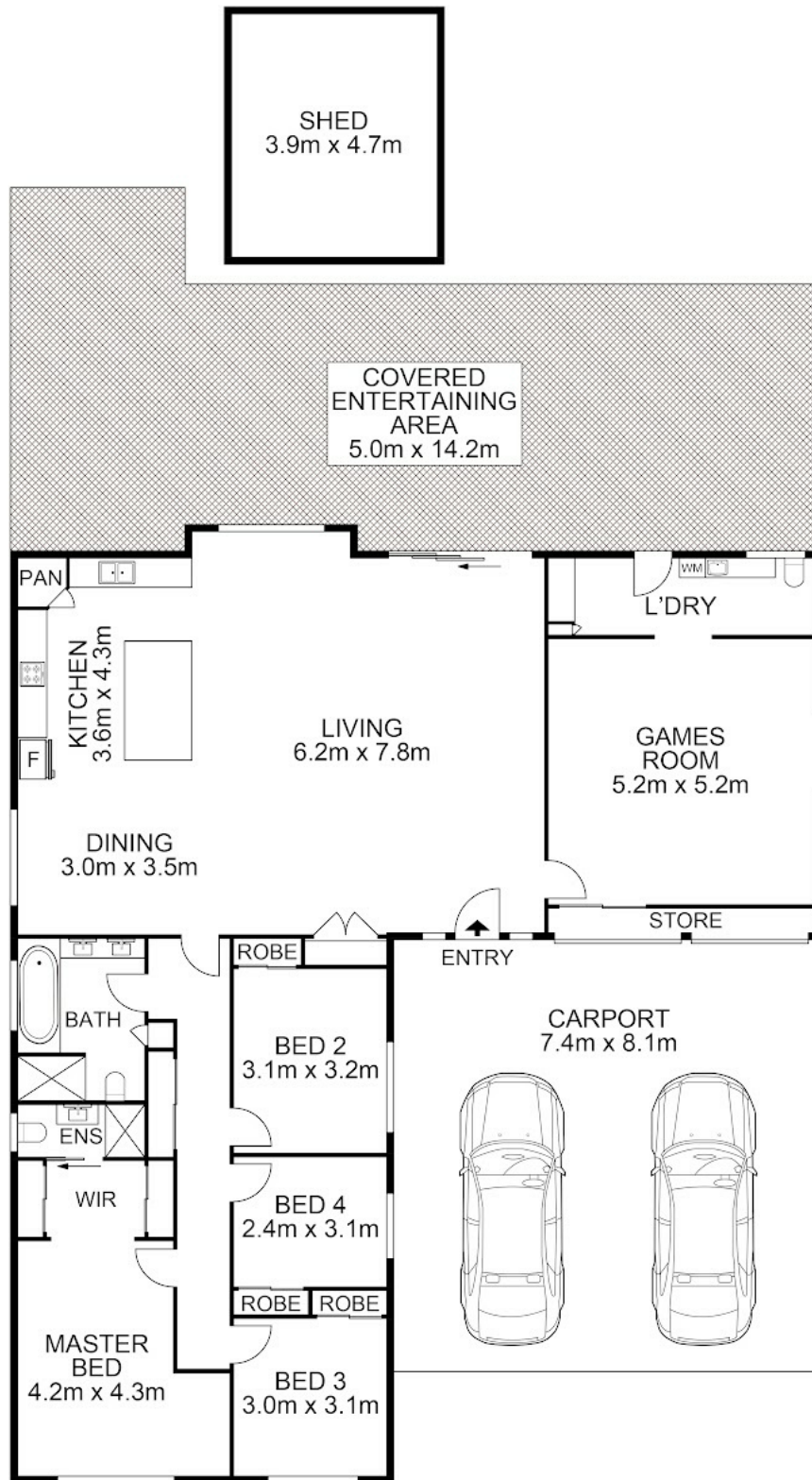
**4 BED | 2 BATH | 4 CAR**

**PRICE:**  
**\$1,000,000**

**OPEN FOR INSPECTION:**  
**N/A**



**Huss Al Salemi**  
**0411699419**  
huss@atrealty.com.au  
[www.agencycentral.com.au](http://www.agencycentral.com.au)



 AGENCY

Disclaimer: Please note this floor plan is for marketing purposes and is to be used as a guide only. All dimensions are estimates only and may not be exact measurements.

19 Kellerman Drive, St Helens Park

Huss Al Salemi • All measurements are approximate • Drawn for marketing purposes only

0411699419

[huss@atrealty.com.au](mailto:huss@atrealty.com.au)

[www.agencycentral.com.au](http://www.agencycentral.com.au)

