

# SOLD

## QUIET FAMILY HOME ON 450 SQM, FRESH PAINT AND CARPET , 1.5 KM TO ED SQUARE SHOPPING CENTRE AND STATION! FREE BUILDING AND PEST REPORT AVAILABLE!

Step into spacious family living at this impressive 4-bedroom house on a very generous 450sqm block on Ingleburn Gardens Drive, perfectly positioned in the growing suburb of Bardia. This well-designed home offers everything a modern family needs, with generous accommodation and thoughtful features that make daily life a pleasure.

There are estate exclusive facilities such as swimming pool, BBQ area, playground and landscaped communal areas

The heart of this home showcases four comfortable bedrooms and two full bathrooms, ensuring everyone has their own space and privacy. A dedicated second living room provides the perfect work-from-home solution or quiet retreat for students, making this property ideal for today's flexible lifestyle needs.

- Four generously sized bedrooms for growing families, main with ensuite and walk in robe
- Two full bathrooms including family convenience
- Dedicated second living space for work or homework
- Fully fenced 450 square metre block for security and privacy

Outside, the fully fenced yard creates a safe haven for children and pets to play freely, while parents can relax knowing their family is secure. The practical layout extends to parking within an automatic double garage ensuring all family vehicles are protected from the elements while providing additional storage opportunities.

Located in the heart of Bardia, you'll be part of a community rich in history and pride. This suburb honours the brave 16th division soldiers who fought in the Battle of Bardia during World War II, with street names paying tribute to local heroes. The area maintains a strong sense of community spirit that welcomes new families.

- Automatic double garage for your family cars

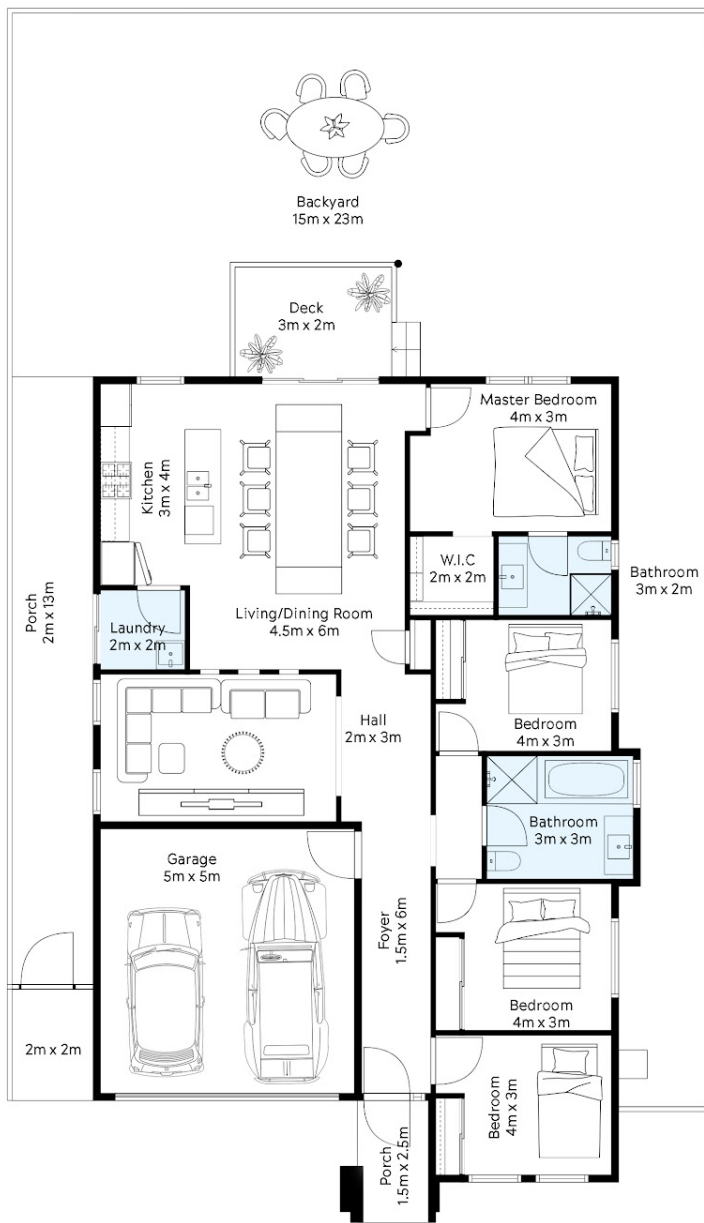
4 BED | 2 BATH | 2 CAR

PRICE:  
\$1,156,000

OPEN FOR INSPECTION:  
N/A



**Vivek Uppal**  
**0426425839**  
vivekuppal@atrealty.com.au  
[www.atrealty.com.au](http://www.atrealty.com.au)



@realty

**Disclaimer :**

We strive to ensure that all details in our floor plans are accurate and thoroughly checked to the best of our ability. However please note that we are not architects or construction contractors. The information provided including are calculations, is approximate and has not been surveyed or drawn to scale. Our floor plans are intended solely for representational purpose and should be used as such. They should not be relied upon for structural, detailed, or other critical information.

Disclaimer: Please note this floor plan is for marketing purposes and is to be used as a guide only. All dimensions are estimates only and may not be exact measurements.