

3/125 THORNDON QUAY, PIPITEA, WELLINGTON CITY, WELLINGTON 6011



## FOR SALE

### HARBOUR VIEWS, ALL-DAY SUN AND EXCEPTIONAL VALUE

Positioned on the top floor with sweeping harbour views and all-day sun, this immaculately presented apartment offers unbeatable value on the city fringe. With three bedrooms, two bathrooms, and two secure car parks, opportunities like this are rare, especially at this level of value.

Spanning an impressive 190sqm<sup>+</sup> across two levels, the layout offers both space and flexibility. The lower level features open-plan living, dining, and kitchen areas that flow seamlessly to a large west-facing deck, ideal for entertaining or enjoying the afternoon sun.

Upstairs, the primary bedroom with an ensuite captures panoramic harbour views, while the second bedroom enjoys its own west-facing deck. The third bedroom sits adjacent to the family bathroom and laundry, providing great functionality for guests or family.

Set in a newly re-clad and re-roofed complex with double glazing and insulation, all the hard work has been done — move in and enjoy peace of mind.

Just moments from the CBD, cafes, local schools, the Stadium, New World supermarket, and public transport, this is city-edge living at its best.

#### Luxe List of Features:

- \*Fully re-clad, re-roofed, double-glazed, and insulated
- \*Three bedrooms, two bathrooms
- \*Dual west-facing decks for sun and views
- \*Top-floor position with stunning harbour outlook
- \*Two secure car parks
- \*Walking distance to the city and amenities

BEO \$765,000. Contact us today to view this exceptional city-fringe apartment.

**3 BED | 2 BATH | 2 CAR**

#### PRICE:

Enquiries Over \$765,000

#### OPEN FOR INSPECTION:

N/A

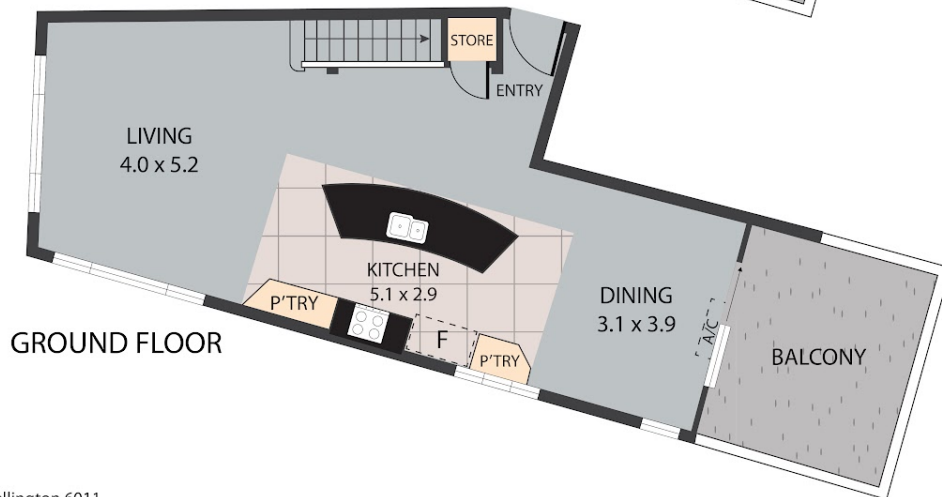
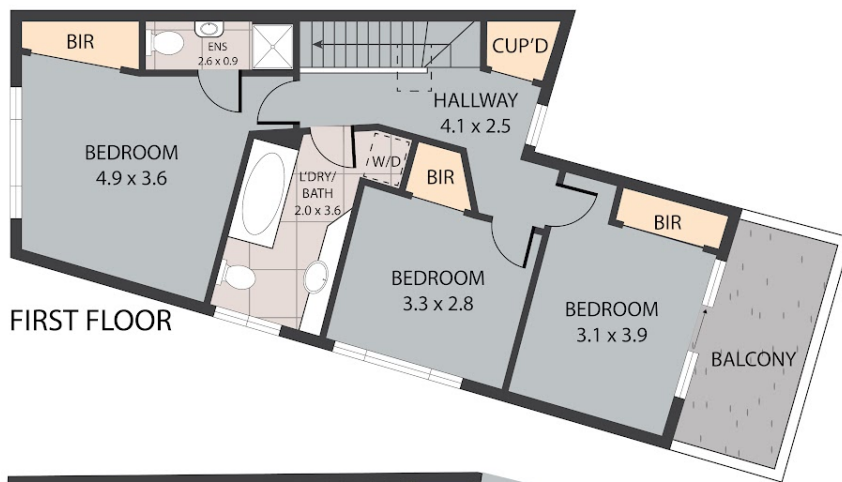


**Grace Henderson**

**0275472234**

[grace@luxerealty.co.nz](mailto:grace@luxerealty.co.nz)

[www.luxerealty.co.nz](http://www.luxerealty.co.nz)



3/125 Thorndon Quay, Pipitea, Wellington 6011

Whilst every attempt has been made to ensure the accuracy of the floor plan contained here, measurements of doors, windows, rooms and any other items are approximate and no responsibility is taken for any error, omission, or misstatement. This plan is for illustrative purposes only and should be used as such by any prospective purchaser.

Disclaimer: Please note this floor plan is for marketing purposes and is to be used as a guide only. All dimensions are estimates only and may not be exact measurements.