



**SOLD**

## MORE THAN MEETS THE EYE!!

This spacious 4 bedroom timber home is on a large 1123m2 block and is located in a quiet location within walking distance to schools and the town centre in Pittsworth. This home features VJ timber walls and 9ft high ceilings and offers four spacious bedrooms plus office which could be utilised as an extra bedroom or office space. The open plan kitchen/dining has plenty of cupboards, bench space and a freestanding oven. The lounge room is situated off the kitchen and has a reverse cycle air conditioner and a Rinnai Gas Heater. The bathroom has a shower, vanity unit and toilet. Downstairs there is a laundry and a second toilet. This large block has various car parking options with a single car garage adjacent to the house on one side and an additional two car garage on the other side with two driveways on the property. There are two rainwater tanks and town water is connected to the property. You will love the covered entertainment situated at the rear of the house surrounded by beautiful established gardens. There is a large bird cage at the back of the property and a large fenced dog enclosure with a dog run area.

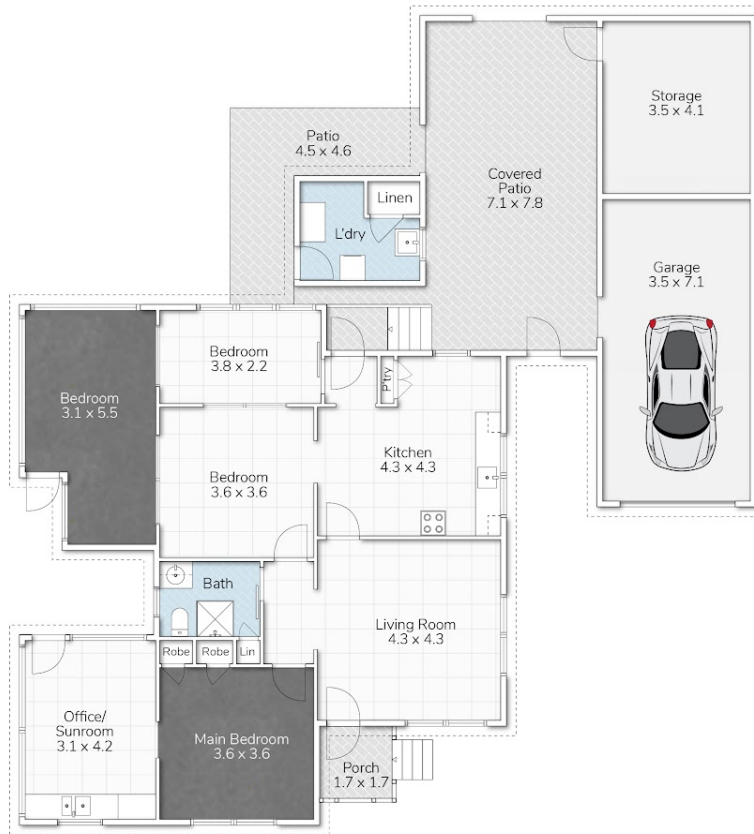
**4 BED | 1 BATH | 3 CAR**

**PRICE:**  
\$600,000




**OPEN FOR INSPECTION:**  
N/A



**Katrina Goodall**  
**0407677126**  
katrinagoodall@atrealty.com.au  
[www.atrealty.com.au](http://www.atrealty.com.au)



5 Collins Street, Pittsworth

 4 Bed
  1 Bath
  1 Car

Internal 156m<sup>2</sup> | External 50m<sup>2</sup> | Total 206m<sup>2</sup>

This floor plan is for marketing purposes only. Dimensions and layout are approximate. Mountfort Media gives no guarantee or warranty over the accuracy of this plan.

Disclaimer: Please note this floor plan is for marketing purposes and is to be used as a guide only. All dimensions are estimates only and may not be exact measurements.