



SOLD

TROPICAL RETREAT WITH POOL IN THE HEART OF JINGILI

Set in the heart of family-friendly Jingili, this home offers exceptional convenience with a lifestyle to match. Right across the road you'll find Jingili Primary School, lush parklands, and open ovals —ideal for kids, pets, and weekend activities. It's just a short walk to the local shops and a quick drive to Casuarina Shopping Square, Casuarina Senior College, Charles Darwin University, and Leanyer Water Park, making it an unbeatable location for families or investors alike.

Lovingly maintained by long-term owners, this neat and tidy home is ready for its next chapter. Step inside to a spacious open-plan living, dining, and kitchen area that's filled with natural light and tropical garden views. The layout is practical and airy, with banks of louvres inviting in the breeze and enhancing cross-ventilation. The kitchen is both functional and generous, flowing into a large laundry with direct access to the back verandah.

Property Highlights:

- Three generous bedrooms with built-in robes and louvred windows
- Open-plan living and dining with excellent airflow and natural light
- Well-appointed kitchen with ample storage and bench space
- Large undercover verandah perfect for outdoor entertaining
- In-ground swimming pool surrounded by tropical gardens and tall shade trees
- Bali hut by the pool – a great spot to relax or entertain
- Garden shed, secure fencing, and double-gated entry
- Parking for at least four vehicles

Move-in ready and packed with lifestyle features, this home offers great value in a tightly held suburb.

Additional Information:

- Year Built: 1971
- Status: Vacant possession – ready for you to move in immediately.
- Rental Estimate: \$650 - \$670 per week
- Council Rates (approx.): \$ per year

Contact me today at 0417508800 or nicolewheeler@atrealty.com.au to schedule a private

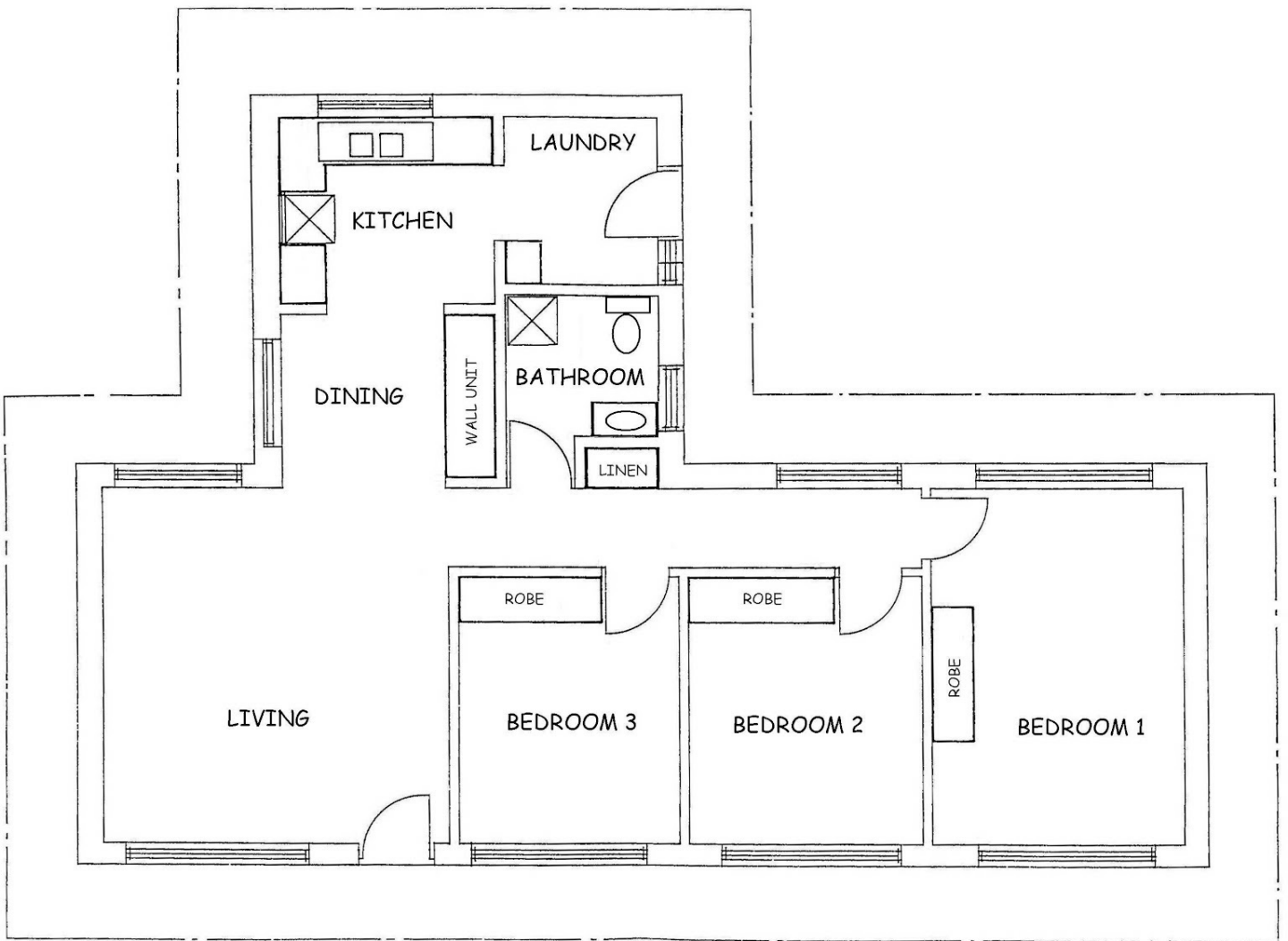
3 BED | 1 BATH | 4 CAR

PRICE:
\$541,000

OPEN FOR INSPECTION:
N/A



Nicole Wheeler
0417508800
nicolewheeler@atrealty.com.au
www.atrealty.com.au



Disclaimer: Please note this floor plan is for marketing purposes and is to be used as a guide only. All dimensions are estimates only and may not be exact measurements.