



SOLD

SPACIOUS FAMILY HOME IN KEW

Step inside to discover a well-maintained interior where comfort meets functionality. The home features a welcoming lounge area, perfect for family gatherings and relaxation. The kitchen comes equipped with modern conveniences, including a dishwasher, making meal preparation and cleanup a breeze.

Storage solutions are abundant throughout. The family bathroom services all four bedrooms efficiently, while the practical layout ensures privacy and comfort for all family members.

The property showcases several desirable features:

- 4 bedrooms
- Separate toilets
- Separate laundry
- Double glaze windows
- Heat pumped
- HRV system
- Secure double remote garage
- Fully fenced boundaries ensuring privacy and security
- A shed providing excellent storage options for tools and outdoor equipment
- Well-maintained gardens with plenty of space for children to play

The property's location offers excellent accessibility to essential amenities. With Kew Hospital is nearby, making this an ideal residence for healthcare professionals.

This property represents an excellent opportunity to secure a substantial family home in a location that balances residential comfort with proximity to essential services. The combination of indoor comfort and outdoor space makes this home an ideal choice for those seeking a property that can grow with their family's needs.

Don't miss this chance to own a piece of Kew's residential charm. Contact us today to arrange your private inspection of this impressive family home.

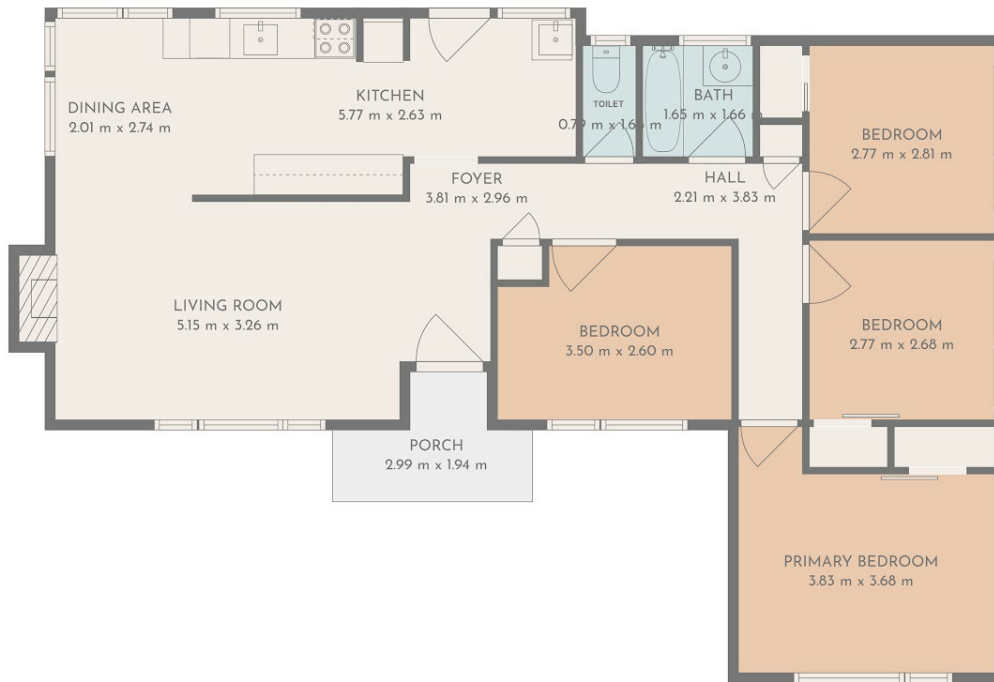
4 BED | 1 BATH | 2 CAR

PRICE:
\$420,000

OPEN FOR INSPECTION:
N/A



Randa Nicol
0211797786
randa@nicolrealty.co.nz
www.nicolrealty.co.nz



28 Argyle Street Kew



For Visual Purpose Only

Drawings are approximate and to be used for visual representation only. Measurements should be verified by the buyer. We take no responsibility for omissions and errors. This floorplan is provided without warranty of any kind. Sensopia disclaims any warranty including, without limitation, satisfactory quality or accuracy of dimensions.

Floor Plan by INSPIRE MEDIA WORKS

Disclaimer: Please note this floor plan is for marketing purposes and is to be used as a guide only. All dimensions are estimates only and may not be exact measurements.