



SOLD

MODERN COASTAL LIVING IN THE HEART OF MAROOCHYDOR

This spacious and stylish two-bedroom apartment offers the perfect blend of comfort, convenience, and lifestyle. Featuring a full master ensuite plus a second bathroom, it's ideal for professionals, couples, or small families seeking low-maintenance coastal living. Step into the open-plan living area designed for effortless indoor-outdoor flow, complete with air conditioning throughout and a modern kitchen boasting Caesarstone benchtops and a dishwasher. The master bedroom features mirrored built-in robes and direct access to the balcony, while the second bedroom also opens onto the balcony - perfect for morning coffee or evening relaxation.

The large, undercover balcony is a true highlight - ideal for entertaining with space for an outdoor setting and BBQ, ready to be enjoyed year-round.

Additional features include:

Neutral interior tones to suit any style

Separate built-in laundry

Secure, gated parking with ample visitor spaces

Dedicated car park conveniently located next to the internal lift

Unbeatable Location:

Just a short two-minute stroll to Sunshine Plaza

Less than 1km to Maroochydore State High School

Only 2km to Immanuel College

A short 7 minute walking distance to Ocean Street's vibrant dining and entertainment precinct

A quick 15 minute walk to Cotton Tree beaches

Only 400m to the owner's favourite swimming spot at Picnic Point Esplanade

15 minute drive to the Sunshine Coast Airport with easy access to the Bruce Highway and Sunshine motorway

Whether you're seeking your new home or a smart investment, this apartment offers not just premium features, but an enviable coastal lifestyle.

Don't miss this opportunity – inspect today!

2 BED | 2 BATH | 1 CAR

PRICE:
\$870,000

OPEN FOR INSPECTION:
N/A

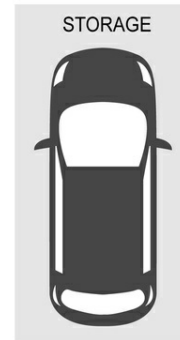
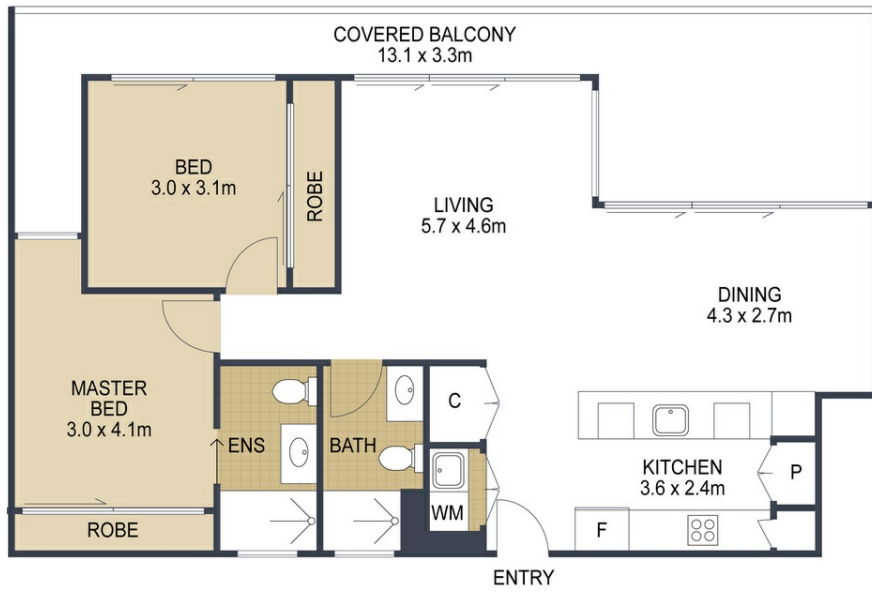


Shane Dawes

0411302925

sdp@atrealty.com.au

www.atrealty.com.au



-
- 2
- 2
- 1
- TOTAL: 104m²

202/25 Baden Powell Street, **MAROOCHYDORE**

ARTIST'S IMPRESSION ONLY: While every attempt has been made to ensure the accuracy of this floor plan's areas and measurements of doors, windows, rooms and all other items are approximate and no responsibility is taken for any error, omission, or mis-statement. This plan is for illustrative purposes only and should only be used as such by any prospective purchaser. Floor plan by: www.open2view.com.au



Disclaimer: Please note this floor plan is for marketing purposes and is to be used as a guide only. All dimensions are estimates only and may not be exact measurements.