



FOR SALE

WELCOME TO WIMBLEDON PARK ESTATE

Discover the perfect blend of comfort, space, and convenience in this beautifully appointed 4-bedroom, 2-bathroom home with a double garage, tucked away in the thriving heart of Morayfield. Designed with family living in mind, this residence puts everyday essentials just a stone's throw from your doorstep.

Step inside and be welcomed by a thoughtful floor plan that combines open, airy living with cosy retreats. The well-equipped kitchen seamlessly connects to the dining area, the main lounge, and a second living space all leading out to a generous, private patio ideal for summer BBQs and weekend gatherings.

Each of the four bedrooms includes built-in robes, while the air-conditioned living room ensures year-round comfort. Set on a spacious 750m² block, the home features easy-care landscaping and plenty of space for a pool, a trampoline, or even the boat offering relaxed living with room to grow.

Whether you're upsizing, investing, or planting roots, this property offers a practical lifestyle with endless potential for cherished memories. Don't let this one slip away make it yours today!

Land size: 750m²
Approximate year built: 2002

Approximate potential rental income: \$650 per week

HOME FEATURES:

- Spacious kitchen with ample bench space
- Master bedroom with BIR & Ensuite
- 3 additional bedrooms with BIR
- Large family bathroom
- Separate toilet
- Large patio area
- Double car lock up garage
- Side access
- Dog friendly fenced yard
- Low maintenance landscaping

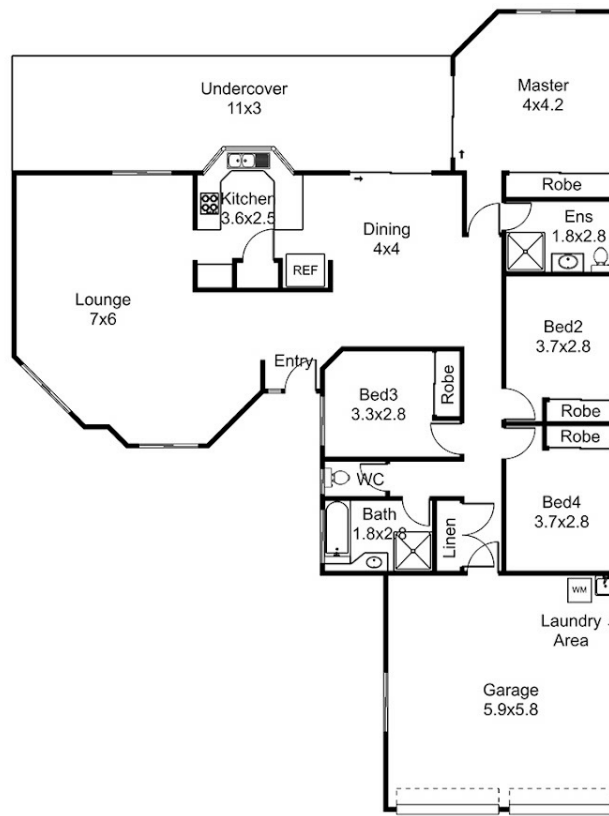
4 BED | 2 BATH | 2 CAR

PRICE:
FOR SALE

OPEN FOR INSPECTION:
N/A



Mitchell Younger
0488458887
mitchell.younger@atrealty.com.au
www.atrealty.com.au



Floor plan, measurements and dimensions are approximate and are for illustrative purposes only.
 Pixmo Productions gives no guarantee, warranty or representation as to the accuracy and completeness of the floor plan.

FLOOR PLAN:

22 WIMBLEDON DRIVE - MORAYFIELD

APPROXIMATE UNDER ROOF SPACE = 210m²

Disclaimer: Please note this floor plan is for marketing purposes and is to be used as a guide only. All dimensions are estimates only and may not be exact measurements.