

7 ELWOOD CLOSE CORINELLA



FOR SALE

COASTAL COMFORT & CONTEMPORARY STYLE – JUST MOMENTS FROM THE BAY

Welcome to 7 Elwood Close, Corinella – a near-new Simmons-built home offering a perfect balance of modern comfort and coastal lifestyle. Nestled in a quiet court location just minutes from the pristine foreshore, this 3-bedroom residence is ideal for permanent living, weekend escapes, or investment in one of Bass Coast's rising stars.

Step inside and be greeted by spacious open-plan living, complete with premium finishes, including 40mm Caesarstone benchtops, an Attica-designed kitchen, and quality flooring throughout. Year-round comfort is assured with a powerful 7.3kW split system, and eco-conscious buyers will love the 6.7kW solar system, rainwater tank, and NBN connection already in place.

Enjoy the peaceful lifestyle Corinella is famous for – stroll to the jetty, launch the boat at the upgraded boat ramp, or explore the scenic walking tracks along the coast. Just a short drive away, you'll find the cafes, wineries, and surf beaches of Phillip Island, Inverloch, and Bass Coast's natural wonders, making this a perfect base for adventure and relaxation.

Property Features:

- 3-bedroom near-new Simmons home
- Designer kitchen with 40mm Caesarstone benchtops & Attica fittings
- Light-filled open-plan living and dining
- 7.3kW split system air-conditioning
- 6.7kW solar system + rainwater tank
- NBN connected and much more this is a must see

Peaceful court location close to Corinella foreshore and jetty
Don't miss your opportunity to secure this stylish and sustainable coastal home in one of the region's most tightly held seaside communities.

Contact Daniel or Tamara @realty today to arrange your inspection.

Disclaimer: All information provided has been supplied by the property owner. While we believe it to be accurate, we do not guarantee its correctness. Buyers are advised to undertake their own

3 BED | 2 BATH | 2 CAR

PRICE:

\$675,000 - \$700,000

OPEN FOR INSPECTION:

N/A

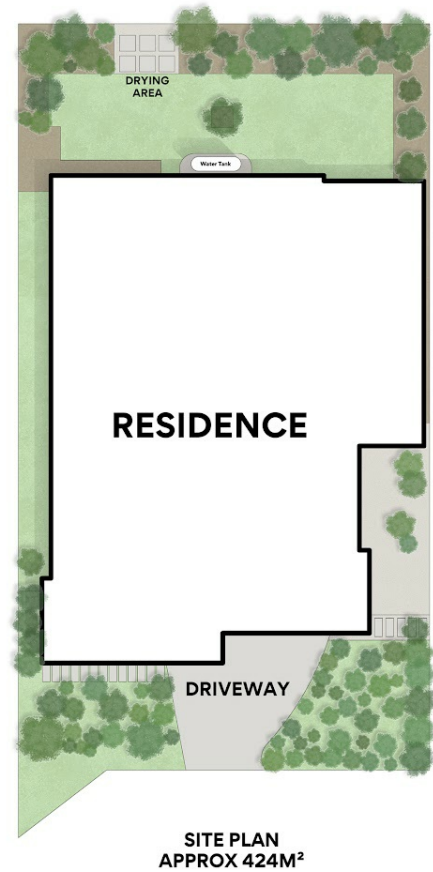
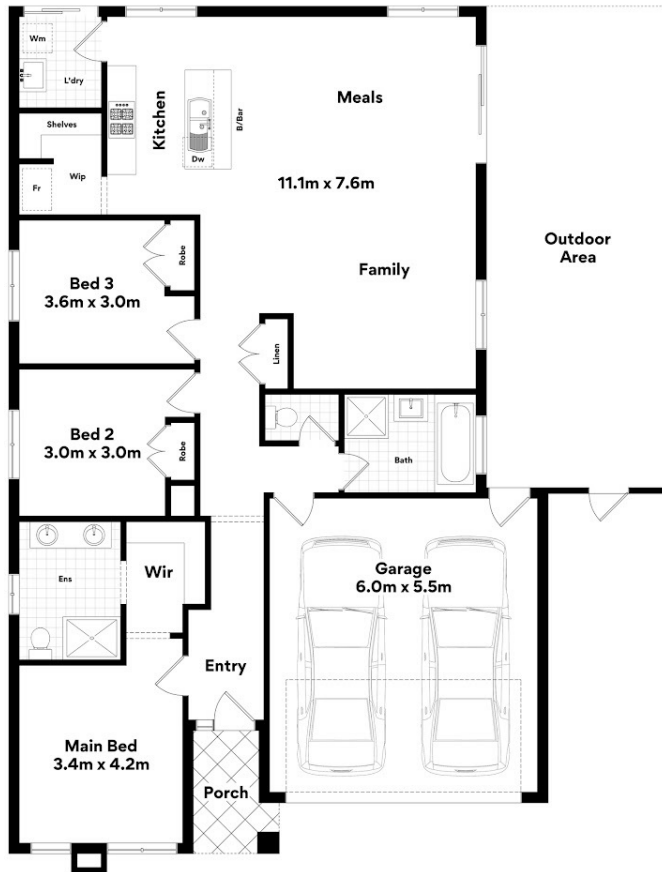


Daniel Leskie

0400503300

danielleskie@atrealty.com.au

www.atrealtypropertyexperts.com.au



7 Elwood Cl, Corinella

Whilst every attempt has been made to ensure the accuracy of the floorplans contained here, measurements of doors, windows and rooms are approximate and no responsibility is taken for any error, omission or misstatement. These plans are for representation purposes only.

Disclaimer: Please note this floor plan is for marketing purposes and is to be used as a guide only. All dimensions are estimates only and may not be exact measurements.