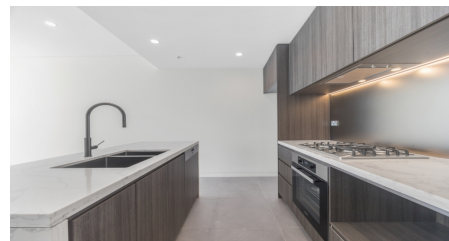


1801/3 PADDOCK STREET,
LIDCOMBE



FOR SALE

NEAR-NEW LUXURY APARTMENT WITH UNMATCHED CONVENIENCE

Move into a near-new, architecturally designed apartment that perfectly blends modern sophistication with lifestyle convenience. Ideally situated, this bright and spacious residence is ideal for first-home buyers, young families, downsizers, and savvy investors.

Enjoy abundant natural light, elevated designer finishes, and sweeping views—all set in a thriving urban village moments from world-class dining, retail, and entertainment.

Property Highlights:

- South facing with Natural light, fresh breezes and Paramatta city view.
- Generous bedroom with mirrored built-in wardrobes and floorboard.
- Modern bathrooms with premium fixtures & frameless glass shower
- Wall hung vanity with stone top.
- Open-plan living & dining with floor-to-ceiling glass
- Private entertainer's balcony with sweeping views
- Designer kitchen with Miele appliances, 40 mm stone benchtops & gas cooking Dishwasher and Dryer
- High ceilings, LED downlights, ducted air-conditioning & intercom system
- Secure basement parking with lock-up storage cage
- Access to resort-style amenities including:
 - 20-metre swimming pool
 - Rooftop gardens, Gym & BBQ zones
- Well-maintained communal gardens & recreational areas

Unbeatable Location (all approx):

- 800m (approx.) to Olympic Park Station
- 400m (approx.) to Woolworths Metro
- Walk to Accor Stadium, Bicentennial Park, and the Olympic Park precinct (300m–1800m)

1 | 1 | 1

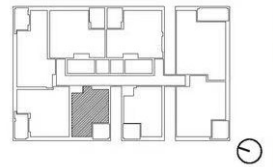
PRICE:
Just Listed

OPEN FOR INSPECTION:
Jul 5 at 12:00pm - 12:30pm



Prajwal Bhattarai
0423743157

prajwal@propticonnect.com.au
propticonnect.com.au



Disclaimer: This floor plan is a guide and indicative of style ONLY and does not constitute an offer or contract.