



SOLD

REFINED COASTAL LIVING BACKING ONTO NATURE – THAT ELEVATE LIFESTYLE

Welcome to 7 Zenith Avenue, Sandy Beach – a beautifully presented four-bedroom home in one of the most sought-after pockets of the Sandy Estate. Surrounded by nature, the home enjoys a rare and idyllic setting: parkland across the road and a tranquil reserve at the rear, offering privacy, outlook, and a relaxed coastal lifestyle.

Set on a generous 794sqm block, the property has recently undergone significant upgrades to the outdoor spaces, including fresh landscaping, improved garden drainage, and a newly enhanced alfresco area. These improvements not only elevate the visual appeal but also improve functionality and liveability—perfect for entertaining, relaxing, or future additions.

Inside, the home's thoughtful design is immediately evident. A wide entryway leads to an open-plan living area with raked ceilings and north-facing windows, filling the home with natural light and capturing ocean breezes year-round. This space flows effortlessly onto a large hardwood deck at the rear, creating a seamless indoor-outdoor transition.

The stylish kitchen is anchored by an island bench with pendant lighting and features a 900mm freestanding gas cooktop with electric oven, range hood, and a walk-in pantry with fridge recess. It's well-appointed for family living or entertaining on any scale.

A separate media room offers a second living space for movie nights or quiet retreat. The main suite is privately positioned at the back of the home and features a walk-in robe and open ensuite with twin vanities. The additional three bedrooms include built-in wardrobes and are serviced by a central family bathroom with a separate toilet.

Outside is where this property truly shines. The expansive backyard now offers a refreshed alfresco zone framed by low-maintenance landscaping, with the scope to add a pool, large shed, or even a second dwelling (STCA). With rare dual access via the rear reserve, it's an ideal setup for those with a boat or caravan.

Additional features include:

Dedicated laundry with outdoor access

4 BED | 2 BATH | 2 CAR

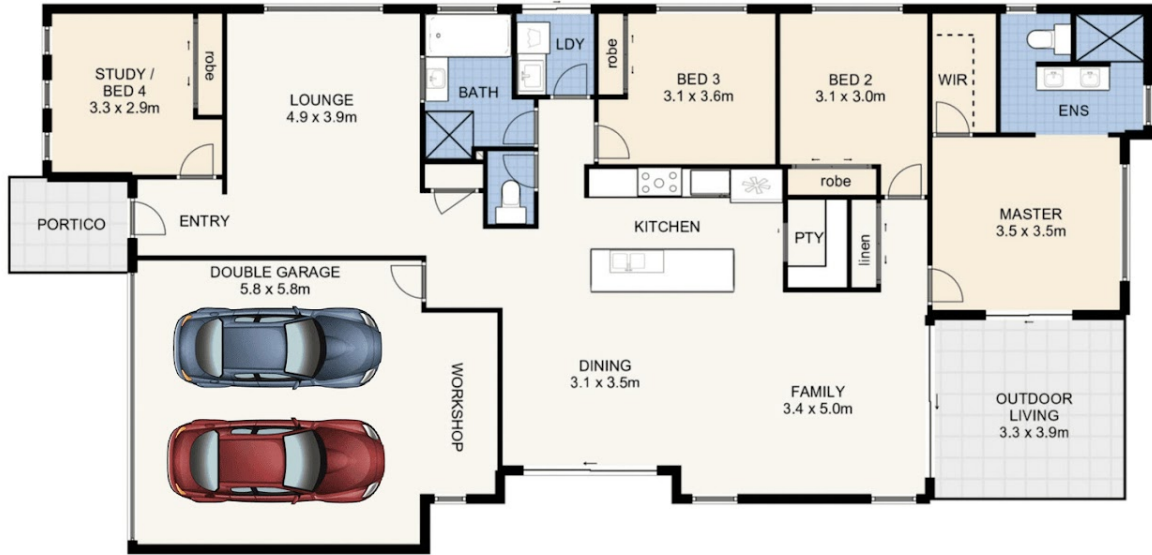
PRICE:
\$1,030,000

OPEN FOR INSPECTION:
N/A



Mick Smith
0402865600

micksmith@yourcoastalagency.com.au
www.yourcoastalagency.com.au



INT: 206 sqm
 EXT: 21 sqm
 TOTAL: 227 sqm

7 ZENITH AVENUE, SANDY BEACH

This floor plan is not to scale. Areas and dimensions are approximate and therefore plan should only be used for illustrative purposes.

Disclaimer: Please note this floor plan is for marketing purposes and is to be used as a guide only. All dimensions are estimates only and may not be exact measurements.