



SOLD

STYLISH DUPLEX IN SOUGHT AFTER LOCATION- UNDER OFFER

This charming duplex at 1/67 King Street Buderim presents an outstanding opportunity to secure your place in one of the Sunshine Coast's most established and prestigious suburbs. This delightful two-bedroom residence combines modern comfort with a prime position, offering the perfect blend of convenience and lifestyle.

The combination of location, comfort, and convenience makes this ideal if you are looking for a new home, or if you are looking for an investment in an area that is in high demand with tenants. Being on one level it will appeal to those who prefer easy access, with no stairs. It's position at the rear of the block, away from the main road, makes it quiet and private.

Step inside to discover a thoughtfully designed home where comfort meets practicality. The two well-appointed bedrooms feature built-in wardrobes, providing ample storage space for the modern household. Enjoying the changing seasons is a breeze with reverse cycle air conditioning throughout the home, including the garage.

Outdoor living is easy with a private under cover patio, surrounded by low maintenance gardens, perfect for hosting friends and family for a barbecue or for enjoying weekend brunches. The fully fenced block provides security and privacy, while requiring minimal maintenance - ideal for busy professionals or downsizers.

The home showcases an array of modern conveniences including:

- Split system air conditioning for year-round comfort - living room, both bedrooms and garage
- Built-in wardrobes in bedrooms
- Modern dishwasher in the kitchen
- Solar panels for energy efficiency
- Secure remote garage plus carport
- NBN broadband connectivity

With a shortage of quality properties like this currently available, you will need to be quick to inspect.

2 BED | 1 BATH | 2 CAR

PRICE:
\$710,300

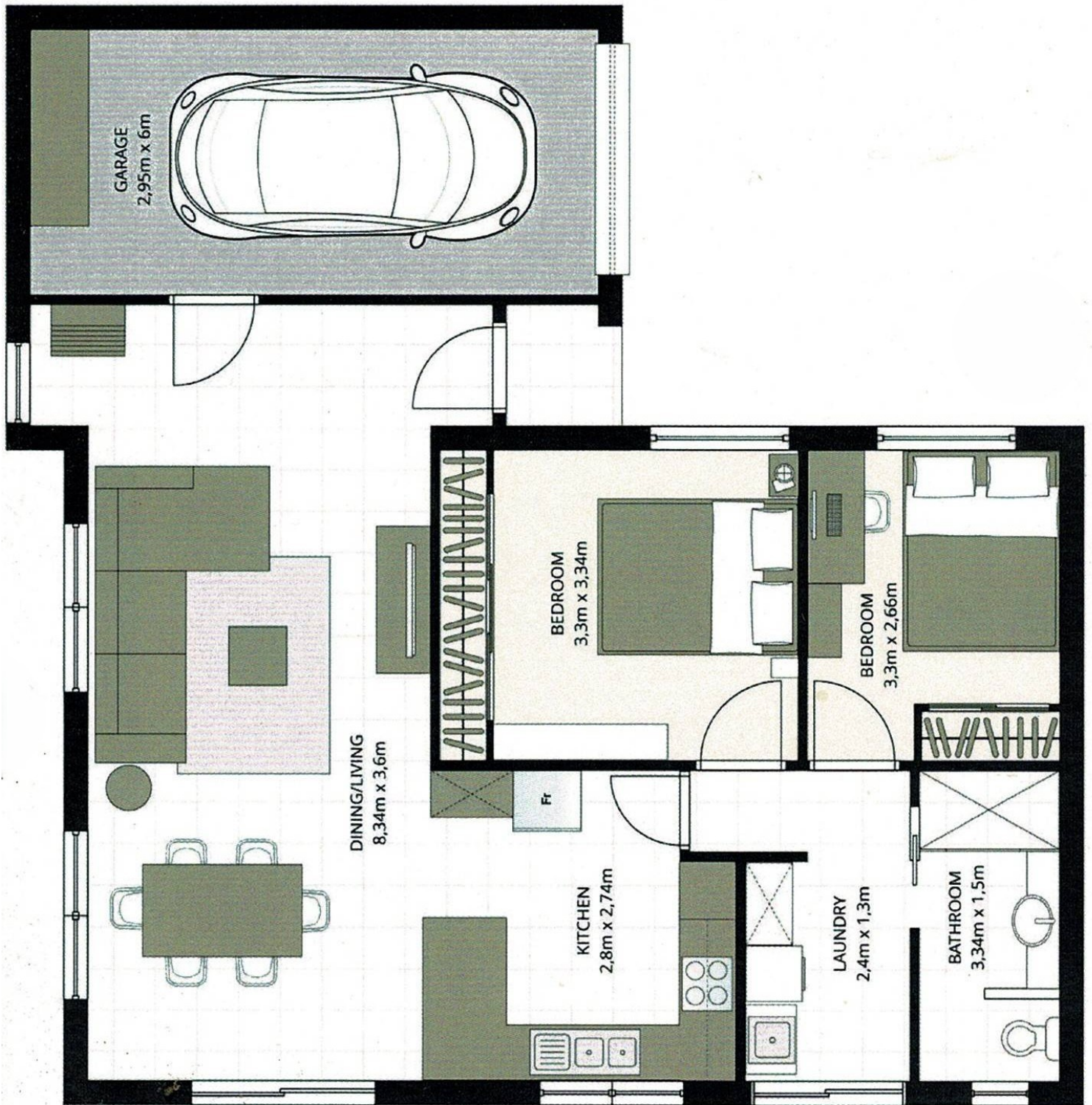
OPEN FOR INSPECTION:
N/A



Stephen Sahlqvist
0458201361

ssahlqvist@atrealty.com.au

www.atrealty.com.au



Disclaimer: Please note this floor plan is for marketing purposes and is to be used as a guide only. All dimensions are estimates only and may not be exact measurements.