



# FOR SALE

## FIRST HOME, FOREVER FEEL – NORTH-FACING CHARM IN BELCONNEN

Have you been searching for something low-maintenance, centrally located, yet tucked away from it all? Look no further than 15/51 Totterdell Street. This light-filled, north-facing apartment overlooks tranquil common gardens where you can listen to the birds sing—all while being just moments from the heart of Belconnen

Featuring an open-plan lounge and dining area, the space flows seamlessly to an enclosed courtyard. The current owners have cherished sitting outside in the evenings, enjoying nothing but the sounds of native birds in the surrounding trees—a rare experience in most apartment complexes. Inside, the master bedroom is generously sized, with large windows that allow natural light to flood in, it is the perfect place for those who love to enjoy a weekend coffee in bed with a book. The second bedroom makes a perfect guest room or home office, while still being large enough for a children's bedroom

Lovingly maintained and updated by the current owners, this special apartment is ready for its next chapter. Ideal for first-home buyers or those looking to downsize without compromising on privacy or lifestyle. Situated in a quiet, low-density complex, this unique property won't be available for long. Contact us for a private inspection if you can't make it to the open home.

### Features:

- North-facing orientation
- Two bedrooms, both with built-in robes
- Open-plan lounge and dining area
- Well-designed kitchen with ample bench space and storage
- Private, enclosed courtyard
- Serene outlook to common gardens
- Quiet position towards the rear of the complex
- Updated window coverings throughout
- New flooring throughout
- Single car space plus additional allocated car park
- Generous visitor parking in the complex
- Storage room attached to car space

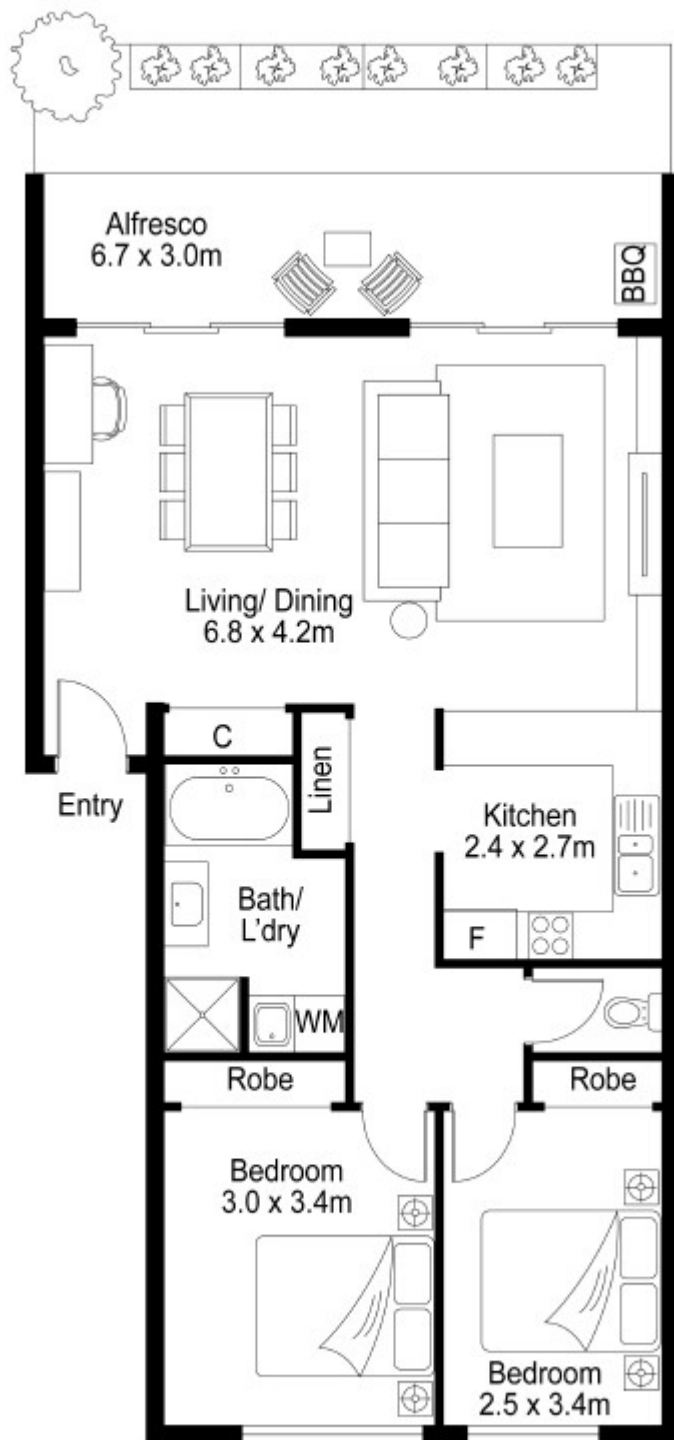
2 BED | 1 BATH | 2 CAR

PRICE:  
\$485,000

OPEN FOR INSPECTION:  
Aug 2 at 12:00pm - 12:30pm



**Sarah Cooper**  
**0478847993**  
sarah@thepropertyagents.com.au  
[thepropertyagents.com.au](http://thepropertyagents.com.au)



FLOOR PLAN

Disclaimer: Please note this floor plan is for marketing purposes and is to be used as a guide only. All dimensions are estimates only and may not be exact measurements.