



FOR SALE

BRING BACK THE SPARKLE.

If you're not afraid of a little elbow grease and have an eye for potential, 31 Taipari Road gives you the chance to polish and prosper!

Set on a generous 809sqm site, this circa 1958 weatherboard bungalow has been a much loved home for its current owners over the last 40 years. Yes, it needs a refresh, pronto. But it's secure. Delightfully private. And brimming with the charm of its era.

THINK: this property + your creative flair.

Imagine the possibilities!

Features include:

- High ceilings in the lounge
- A toasty woodburner (CCC 2000)
- Gorgeous timber flooring throughout (Rimu or Matai according to the plans)
- Stained-glass window above the entrance
- A spacious, partially covered concrete patio facing north and framed by an ambling bougainvillea.
- A compact yet functional man cave off the double carport
- Securely fenced and gated - heaps of parking and lawn!
- Mixed Housing Suburban zone - still versatile but 'more chill than claustrophobic'.
- Not in the flood zone - yippee!
- A stroll to scenic Taipari Strand and Matipo Road School.

And some big ticket items have been sorted in recent years too - like a new roof and switchboard.

The fundamentals of a fabulous home are here: solid bones, great land, and a location that continues to grow in popularity.

Intrigued? I'd love to show you through. Pop into the open homes or get in touch to organise a private viewing!

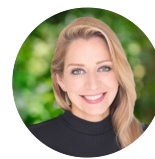
3 BED | 1 BATH | 2 CAR

PRICE:

Price by Negotiation

OPEN FOR INSPECTION:

N/A



Maria Santayana

021454694

m.santayana@realty.co.nz

www.atrealty.co.nz



NORTHTOWEST | **@realty**

Measurements are approximate, this plan is for illustrative purposes only and is not an exact representation of the property

Disclaimer: Please note this floor plan is for marketing purposes and is to be used as a guide only. All dimensions are estimates only and may not be exact measurements.