



FOR SALE

AN OPPORTUNITY TO MOVE IN BEFORE CHRISTMAS!

Peaceful countryside living, this magnificent family residence on sought-after Pepperell Drive effortlessly blends timeless country charm with all the comforts of modern living. Set on a sprawling 6,867 sqm (approx.) of lush land, this four-bedroom home offers a rare opportunity to embrace a lifestyle of space, serenity, and sophistication.

Step inside and discover a home designed for flexible family living, boasting two generous lounge areas ideal for both formal entertaining and relaxed everyday gatherings. Timber floorboards, 12ft ceilings, and the ornate decorative cornices evoke a sense of classic elegance, while the home's practical layout ensures comfort and convenience for the whole family.

- * Four spacious bedrooms with built-in robes
- * Ducted heating plus a charming open fireplace and solid wood heater
- * Stylish kitchen with modern appliances including dishwasher
- * Original hardwood floors and abundant built-in storage
- * Spacious home office or additional living zone
- * dedicated workshop, there's room for every passion and pursuit.
- * Secure remote garage with space for 3 vehicles plus carport

Whether you're hosting guests on the deck, relaxing under the shade of mature trees, or unwinding in the mancave, this property offers space for everyone. Children and pets can enjoy the fully fenced yard, while an established fruit orchard, chicken coop, and water tanks support a more self-sufficient, eco-friendly lifestyle.

This property offers the perfect blend of comfort, value, and location.

4 BED | 1 BATH | 4 CAR

PRICE:

\$1,175,000 - \$1,225,000

OPEN FOR INSPECTION:

N/A

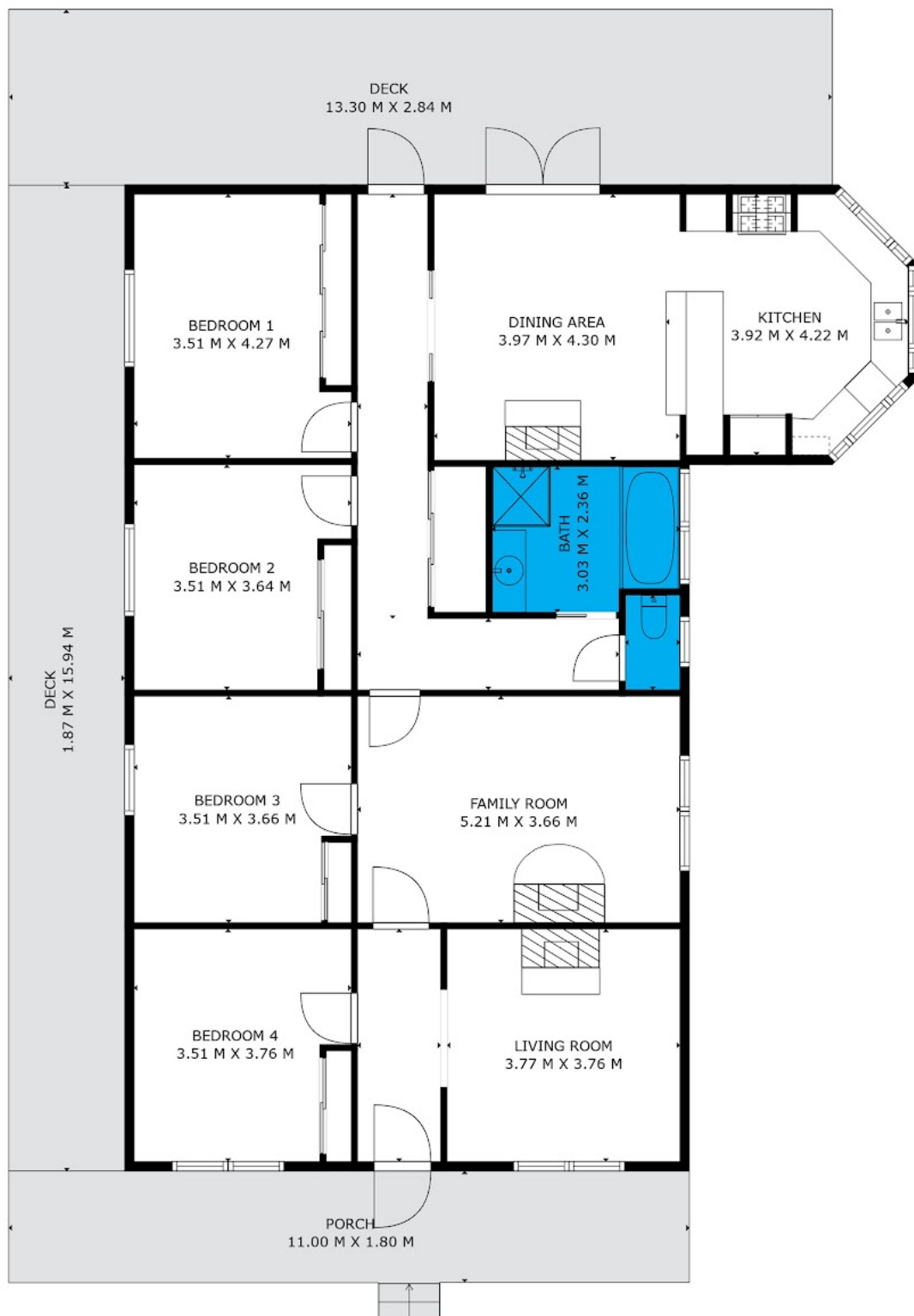


Mel Ahearn

0409183763

mahearn@atrealty.com.au

atrealtypropertysalesgippsland.com.au



Living 17.32sqs
Deck 7.21sqs

Disclaimer: Please note this floor plan is for marketing purposes and is to be used as a guide only. All dimensions are estimates only and may not be exact measurements.

Whilst every attempt has been made to ensure the accuracy of the floor plan contained here, all measurements are approximate and are for illustration purposes only. No responsibility is taken for any error, omission or misstatement.