

SOLD

IMMACULATE FAMILY LIVING WITH CAPTIVATING ELEVATION

Positioned in the highly prized Paramount Gardens Estate, this immaculate family home sits at the top of the street with a captivating northern aspect overlooking Remick Street Bushland Reserve.

Showcasing an expansive, family friendly floor plan on a practical 697sqm allotment, this residence offers the ideal environment for raising children while capitalizing on its solid fundamentals and premium location.

Across two levels, the home features a collection of warm, welcoming spaces thoughtfully designed for effortless living and entertaining. The lower level encompasses a family room, bedroom, study, bathroom, car accommodation, laundry and workshop area.

Stepping upstairs, you will discover the abundant space with generous formal and informal zones. The large, centrally located gourmet kitchen is the definition of form and functionality. This includes a full range of appliances, expansive benchtops, ample cabinetry and direct access to the large outdoor area taking full advantage of the elevation. Seamlessly linking the living, dining, and entertaining, it forms a natural focal point that enables cooking and constant supervision of the children.

The comfort of internal spaces has been recreated outdoors with an amazing entertainers deck. It is sure to become a favourite spot to relax while enjoying the sweeping vista and manicured backyard.

There are four built-in bedrooms upstairs serviced by a second bathroom, the sun-drenched master suite with small walk-in-robe is well proportioned and set at the rear of the home.

A host of additional features further ensures your comfort and convenience, including 2.6m side access, established fully fenced gardens and an ultra-convenient suburban location.

Exemplifying enduring charm and quality, this much-loved family home is not to be missed!

Amenities,

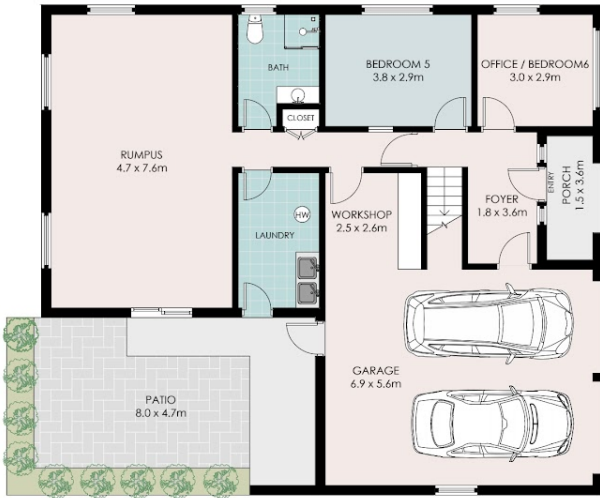
5 BED | 2 BATH | 2 CAR

PRICE:
\$1,575,000

OPEN FOR INSPECTION:
N/A



Clint Devereaux
0431043556
clint@cdproperty.au



GROUND FLOOR

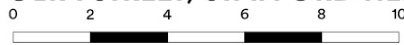


FIRST FLOOR

Internal 273m² | External 72m² | Total Area: 345 m²



3 TRAVOLTA STREET, STAFFORD HEIGHTS



5 Beds + Office 2 Baths 2 Cars

All information contained in this document is from sources we believe to be accurate, however we cannot guarantee its accuracy. Interested persons should make and rely on their own enquiries in relation to measurements, dimensions, layout, furniture and descriptions.

Disclaimer: Please note this floor plan is for marketing purposes and is to be used as a guide only. All dimensions are estimates only and may not be exact measurements.