

SOLD

IDYLIC FAMILY-FRIENDLY ENTERTAINER – DUAL LIVING, HUGE SHED & HOME BUSINESS POTENTIAL!

Tucked away in a quiet Deception Bay cul-de-sac, this well-located home offers unbeatable versatility just minutes from the waterfront. Enjoy the lifestyle perks of being near the Esplanade, local schools, shops, and major highways – with both Brisbane and the Sunshine Coast easily within reach.

Set on a 640m² block, this thoughtfully designed property delivers the perfect setup for families, investors, or those needing flexible living arrangements. The main home features a renovated bathroom, spacious living, and a stylish kitchen, while the fully self-contained granny flat is ideal for dual living or rental income. A separate air-conditioned studio provides the perfect space to run a home business or set up a private office. With a low-maintenance yard and loads of extras, this property is as practical as it is appealing.

Features:

- ▶ 3 bedrooms in the main residence (2 with built-ins)
- ▶ Master bedroom with air-conditioning
- ▶ Renovated bathroom with separate shower and bath + separate toilet
- ▶ Spacious open-plan living and dining with large A/C unit
- ▶ Stylish kitchen with marble benchtops, walk-in pantry & shaker cabinetry
- ▶ Fully self-contained granny flat with kitchen, bathroom, and bedroom – perfect for rental or extended family
- ▶ Air-conditioned detached studio – ideal for a home office or small business
- ▶ Large undercover outdoor entertaining area
- ▶ High-clearance carport – perfect for boat, trailer, or caravan
- ▶ Powered shed/workshop with air-conditioning
- ▶ 13 solar panels + 5,000-gallon rainwater tank
- ▶ Fully fenced, easy-care yard with great street presence

Location Highlights:

4 BED | 2 BATH | 4 CAR

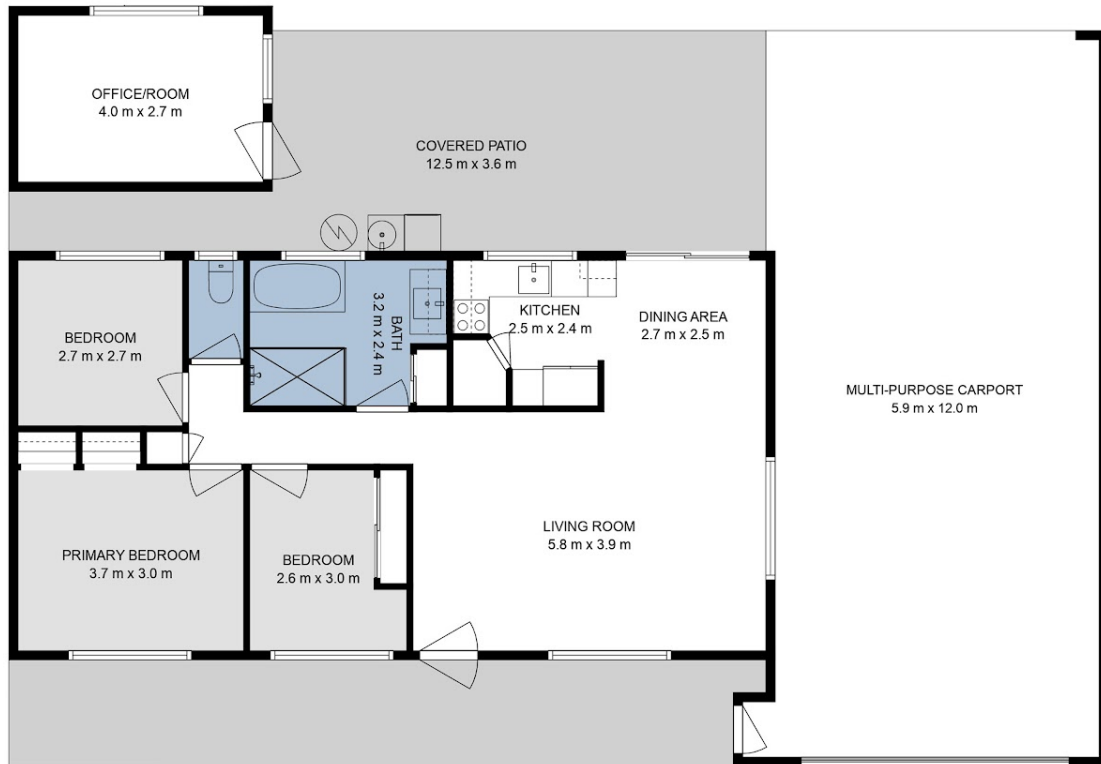
PRICE:
\$837,500

OPEN FOR INSPECTION:
N/A



Paige Creedon
0413402110

paige@creedonpropertygroup.com
creedonpropertygroup.com



This floor plan is intended to give a general indication of the layout only. Sizes & dimensions are approximate, actual may vary.



Disclaimer: Please note this floor plan is for marketing purposes and is to be used as a guide only. All dimensions are estimates only and may not be exact measurements.