



2  2 

GARAGE 37.12m2 AREAS Living 110.32m2 ALFRESCO/PORCH

# FOR SALE

## HOUSE AND LAND PACKAGE FOR INVESTOR AND HOME BUYERS

LAND REGISTERS AUGUST 2025 (anticipated)

Land size 392 sqm

House size 165 sqm

Key features

Premium inclusions as standard

100 % Full turn key, ready to occupy

2590 high ceiling

Steel frame

Premium kitchen inclusions

Premium bathroom inclusions

Stone benchtops to kitchen and bathrooms

Four premium facade options included

Complimentary vinyl plank flooring upgrade

Ceiling fans and downlights throughout

and so much more.

4 BED | 2 BATH | 2 CAR

PRICE:

\$845,000

OPEN FOR INSPECTION:

N/A

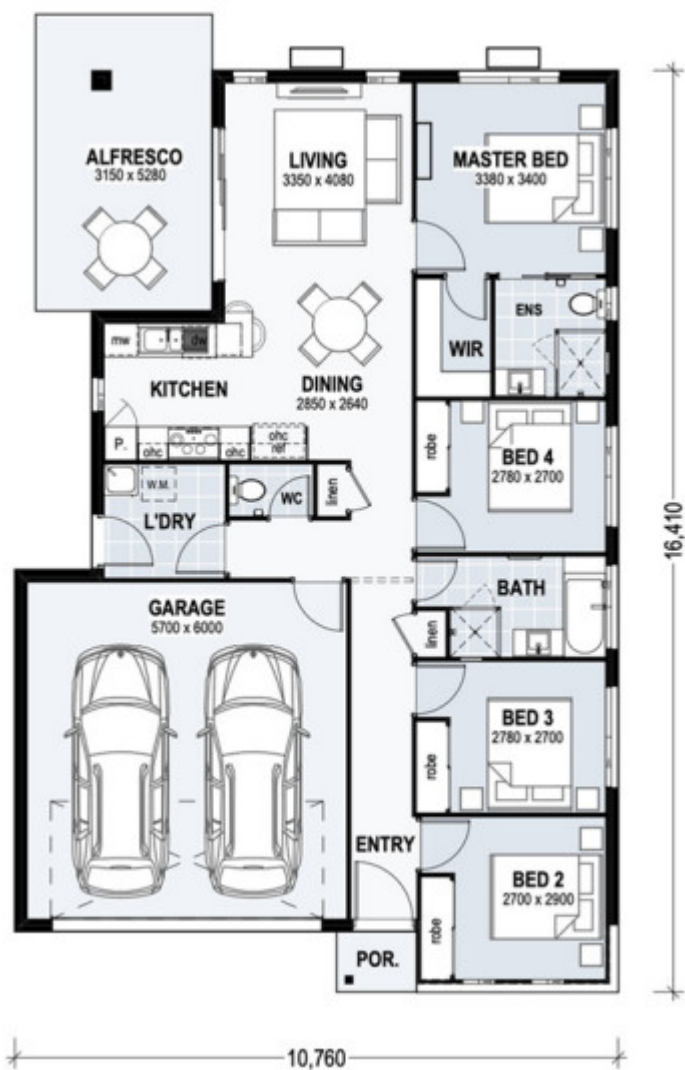


**Carey Halfpapp**

**0438928538**

[carey@atrealty.com.au](mailto:carey@atrealty.com.au)

[www.atrealty.com.au](http://www.atrealty.com.au)



Disclaimer: Please note this floor plan is for marketing purposes and is to be used as a guide only. All dimensions are estimates only and may not be exact measurements.