



SOLD

3-BEDROOM HOME + DOUBLE BAY SHED ON A HUGE 728M2 BLOCK

11 Pottinger St, NEWTOWN

What's on offer...

Perfectly positioned opposite Newtown Park in the highly sought-after suburb of Newtown, this freshly painted and partially renovated 3-bedroom home is an excellent opportunity for families, first-home buyers, or investors and Downsizers.

The property includes a 6m x 6m powered double Colourbond shed, ideal for storage, hobbies, or a workshop, adding real value and versatility.

Inside, the home features a warm and practical layout. All three bedrooms have brand-new carpet, with two offering built-in wardrobes. The main lounge boasts polished timber floors, a new ceiling fan, reverse-cycle air conditioning, and flows through to an open-plan kitchen, dining, and living area, perfect for entertaining or relaxing complete with reverse split system a/c and new ceiling fan's and lights.

The location is unbeatable: stroll across the park to local cafes, a butcher, chemist, and enjoy proximity to quality schools including Newtown State School and Our Lady of Lourdes Primary. Public transport and everyday amenities are also close by, making life effortless.

Properties in this street are tightly held - so act quickly, this one won't last!

Features:

- 728m2 block
- 3 bedrooms, 1 bathroom
- Freshly painted with new carpets & polished timber floors
- Functional floor plan with open-plan living
- 6m x 6m powered double Colourbond shed
- Low-maintenance block with established fruit trees & neat gardens
- 1.8m timber boundary fence with double timber gates
- 2 x Reverse Cycle Split System air conditioners

3 BED | 1 BATH | 2 CAR

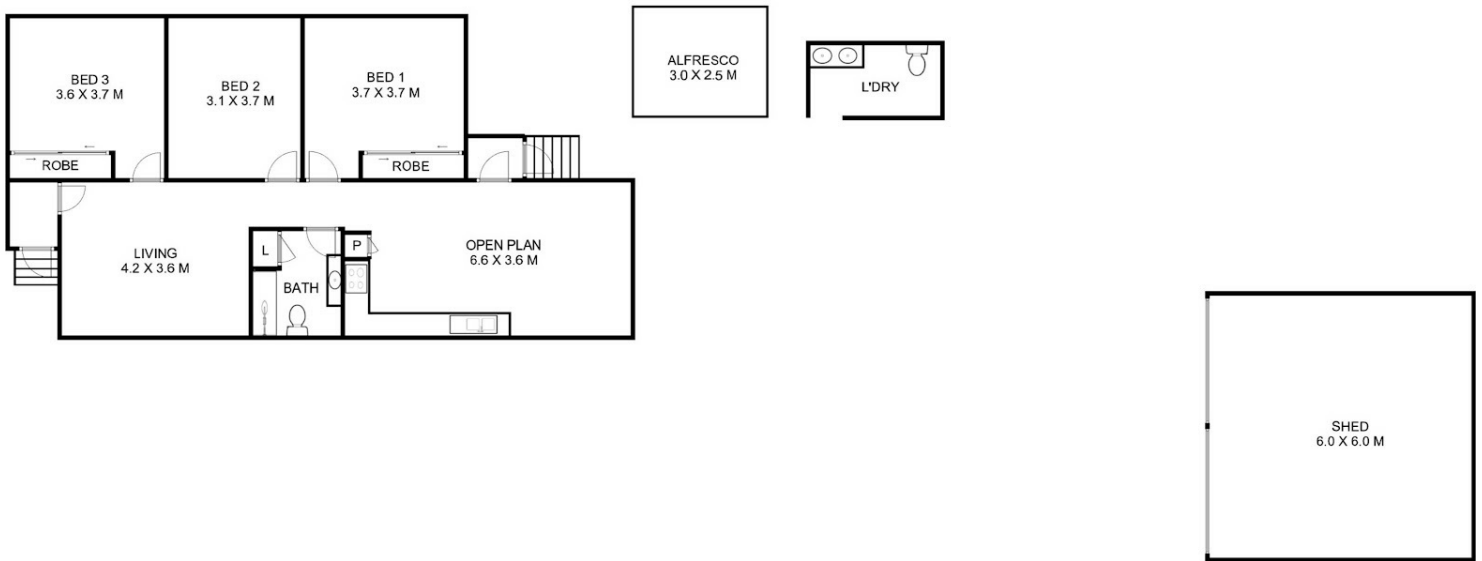
PRICE:
\$690,000

OPEN FOR INSPECTION:
N/A



James Tarbuck
0438938398

james@tarbuckproperties.au
www.tarbuckproperties.au



This plan is for representational purposes only. All dimensions displayed are approximate and shouldn't be solely relied upon. Do not edit, reproduce, copy, modify, crop or in any way exploit copyright to Statik Illusions. More info: statikillusions.com/usage-rights/



Disclaimer: Please note this floor plan is for marketing purposes and is to be used as a guide only. All dimensions are estimates only and may not be exact measurements.