

5 WATER STREET, GUILDFORD, WA, 6055

eatonproperty



SOLD

A GUILDFORD TREASURE: HISTORY, CHARACTER & CHARM

PRICE GUIDE

Suit Buyers High \$1,000,000s

ENQUIRE

Click "Get in Touch" or "Enquire" and send an online enquiry (not a SMS please) to receive further information and be one of the first to view this property.

A GUILDFORD TREASURE: History, Character & Charm

This late 1800s five-bedroom, four-bathroom home, freshly painted and complete with new carpets, blends historic charm with contemporary comfort in one of Guildford's most loved streets. It also features a detached two-bedroom guest house.

Guildford's Water Street sets the tone before you even step inside with majestic flame trees arching overhead, heritage homes lining the street, and the air feeling steeped in history. No. 5 sits behind a white picket fence and lawn, with a white timber-clad exterior and a wide verandah hinting at what you'll find inside.

The journey begins through a leadlight front door into a central hallway, where pressed-metal ceilings, ornate roses and chandeliers immediately take centre stage. To either side, two generous front bedrooms welcome you with garden views, French doors to the verandah, built-in robes and original fireplaces.

The hallway leads to the formal lounge, anchored by a limestone-framed gas fireplace, before opening into the heart of the home: a bright, open-plan kitchen, dining and living area. Just off the lounge is another versatile living space, currently styled as a library, but equally suited to a parent's retreat. This room flows seamlessly into bedroom 1, where leafy garden views, a walk-in robe/dressing cove, and bathroom await. Bedroom 1 also has a private ensuite with an oversized shower. The lounge itself serves as the bridge between the original wing and the modern rear extension.

Beyond the lounge, the extension opens into a sunlit living and dining zone with marble tiling, a

5 BED | 4 BATH | 2 CAR

PRICE:

\$1,850,000

OPEN FOR INSPECTION:

N/A



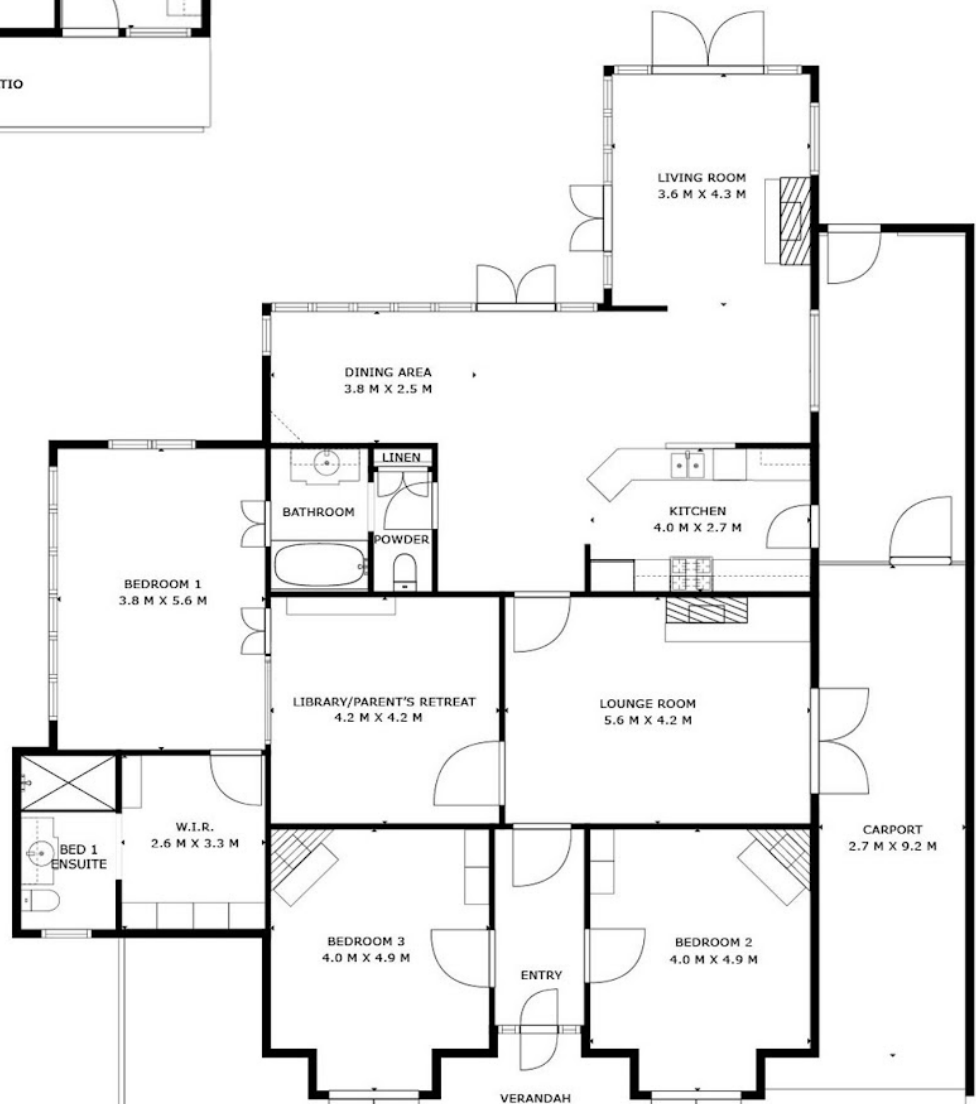
Jarrad Eaton

0403267251

jarrad@eatonproperty.com.au

eatonproperty.com.au

floorplan



Disclaimer: Please note this floor plan is for marketing purposes and is to be used as a guide only. All dimensions are estimates only and may not be exact measurements.

This floor plan is for illustrative purposes only. While every effort has been made to provide an accurate representation, all measurements & other information are approximation only.