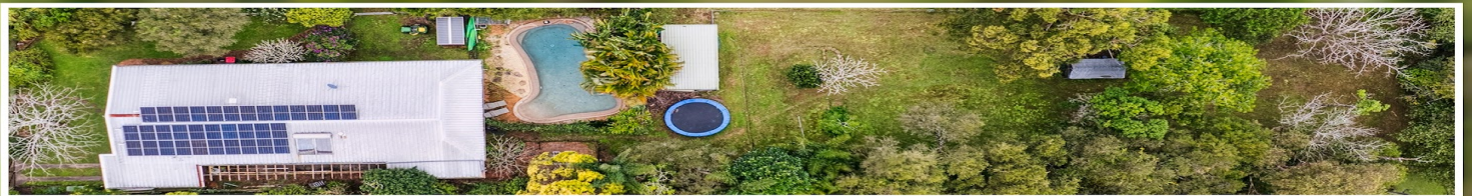


Sold

35 HIGH STREET, LAWRENCE, NSW, 2460

5  | 3  | 4 



GENEROUS LIFESTYLE PROPERTY WITH CLARENCE RIVER VIEWS

PRICE: \$585,000

OPEN FOR INSPECTION:
N/A

If living 'up close and personal' is not your thing then keep reading... Perhaps you yearn to have the ability to be semi-self-sufficient? Maybe you're a pet lover, have lots of children and need space to be YOU? OR perhaps you realise large lot residential settings are making great leaps in capital growth, and that investing looks good here.

Priced realistically, 35 High Street Lawrence enables you to buy into the dream without extending yourself financially. Less & less, will you see leafy, half acre allotments, with large homes, the pool, shedding and more; at this price. At this price point you can renovate, refurbish and renew as you see fit, and reap the rewards later.

Fully fenced and pet proof is this sprawling allotment of 1973m² (approx.). The home appears quaint and lowest from the façade although the home is extensive, with internal stairs leading the lower level of the home. Clarence River Views are enjoyed from the wrap around deck that has multiple entry points to both living rooms and bedrooms.

Five bedrooms are featured here and to balance bedrooms to living space, there are two living areas plus formal dining. In fact, the garage downstairs has been used as a teenager's rumpus room for longer than we know. That makes three areas to enjoy your own space. The kitchen is functional and funky with a cute little breakfast bar.

Yes, we did say FIVE bedrooms. Upstairs we have four bedrooms and two bathrooms. One bathroom being fully equipped for the entire family, and one bedroom with a recently renovated




Kylie Swift // 0488 161 621

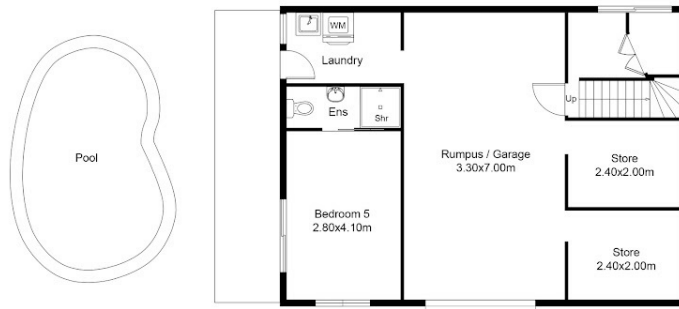
kylie@virtueproperty.com.au // www.virtueproperty.com.au



Sold

35 HIGH STREET, LAWRENCE, NSW, 2460

5  | 3  | 4 



LOWER LEVEL



35 High St, Lawrence NSW

Whilst every attempt has been made to ensure the accuracy of the floor plan contained here, measurements of doors, windows, rooms and any other items are approximate and no responsibility is taken for any error, omission, or mis-statement. This plan is for illustrative purposes only and should be used as such by any prospective buyer.

Kylie Swift // 0488 161 621

kylie@virtueproperty.com.au // www.virtueproperty.com.au

