

# SOLD

## UNBEATABLE VALUE! LEVEL 7 BEACHFRONT APARTMENT IN ICONIC FOCUS BUILDING – INVESTOR'S DREAM

Perched on the 7th floor of the sought-after building at 114 The Esplanade, Unit 27 delivers uninterrupted, panoramic ocean views from multiple vantage points. Located directly opposite one of Surfers Paradise's pristine patrolled beaches and just a short 5-minute stroll to Cavill Avenue, this apartment offers the ideal coastal lifestyle, tranquil, yet steps from everything.

Spanning a total of 144 square meters, this beautifully maintained apartment features 3 spacious bedrooms, 2 bathrooms, and a large separate laundry. With multiple balconies and generous open-plan living, you'll enjoy ocean breezes and natural light throughout the day. Fully furnished and move-in ready, it's perfect as a permanent residence, holiday home, or high-return investment.

Additional features include:

- Reverse cycle air-conditioning and ceiling fans in all rooms
- Well-appointed kitchen with dishwasher and microwave
- Oversized 7-meter lock-up garage with ample storage space
- Building amenities include:
  - Ample visitor parking for over 20 cars
  - Recently renovated heated pool (just 6 months old)
  - Relaxing spa
  - Full-size tennis court, basketball court, table tennis room & compact gym
  - Two expansive BBQ areas under cover
  - Beautiful landscaped gardens on a large parcel of land with strong future development potential

Investment Highlight:

- Currently working on a month to month lease
- Strong rental return of \$1020 p.w - with scope to increase to \$1200 p.w. in the future

This is a rare opportunity to secure a spacious oceanfront property in the heart of Surfers Paradise. Currently tenanted at \$820 per week, it offers solid rental income from day one, with

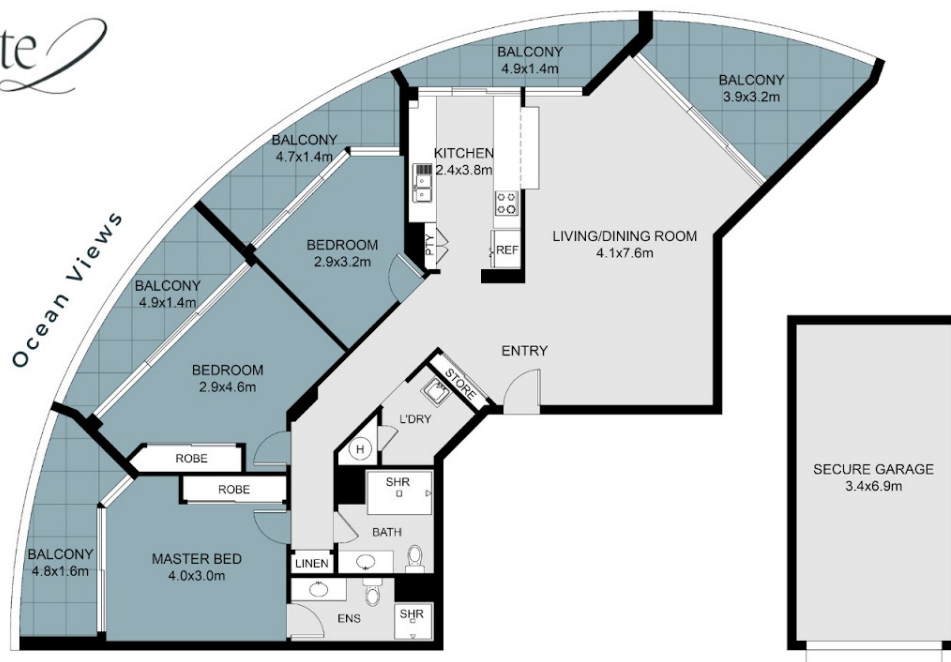
### 3 BED | 2 BATH | 1 CAR

PRICE:  
\$975,000

OPEN FOR INSPECTION:  
N/A



**Raine Scott**  
**0415250414**  
raine@mandate2.com.au  
mandate2.com.au



**FLOOR PLAN**  
144 m<sup>2</sup>

Disclaimer: Please note this floor plan is for marketing purposes and is to be used as a guide only. All dimensions are estimates only and may not be exact measurements.