

5 ELBERTA ROAD, TARNEIT, VIC, 3029



FOR SALE

STUNNING 4-BED IN TARNEIT! CALL STEVE 0432 496 048 FOR DETAILS

Step into luxury living in this striking double-storey townhouse, where contemporary design meets family functionality in Tarneit. This impressive 4-bedroom, 3-bathroom residence spans a generous 18.3 squares, offering the perfect blend of space and sophistication for modern family living...

The thoughtfully designed floorplan showcases premium features throughout, creating an environment of both comfort and style. The ground floor welcomes you with beautiful floorboards that flow seamlessly through the living spaces, while split system air conditioning ensures year-round comfort.

Entertaining is a breeze in the well-appointed kitchen, complete with a dishwasher and ample storage space. The living area opens to create a seamless indoor-outdoor flow, perfect for family gatherings or quiet relaxation.

Upstairs, you'll find generously sized bedrooms, all featuring built-in wardrobes for maximum storage efficiency. The two well-appointed bathrooms and 3rd Toilet are strategically placed throughout the home, ensuring convenience for the whole family.

Notable features include:

- Secure remote-controlled double garage
- Private, fully fenced yard.
- Split system air conditioning for year-round comfort
- Built-in wardrobes in all bedrooms
- Modern kitchen with dishwasher
- High-speed broadband connectivity
- Quality floorboards throughout

The location offers the perfect balance of convenience and community. Situated just 25km west of Melbourne's CBD, Tarneit is a rapidly growing suburb with excellent amenities. The Tarneit Railway Station provides direct access to the city, making commuting a breeze.

4 BED | 3 BATH | 2 CAR

PRICE:

\$570,000 - \$0

OPEN FOR INSPECTION:

Feb 14 at 2:30pm - 3:00pm

Feb 21 at 2:30pm - 3:00pm

Feb 28 at 2:30pm - 3:00pm

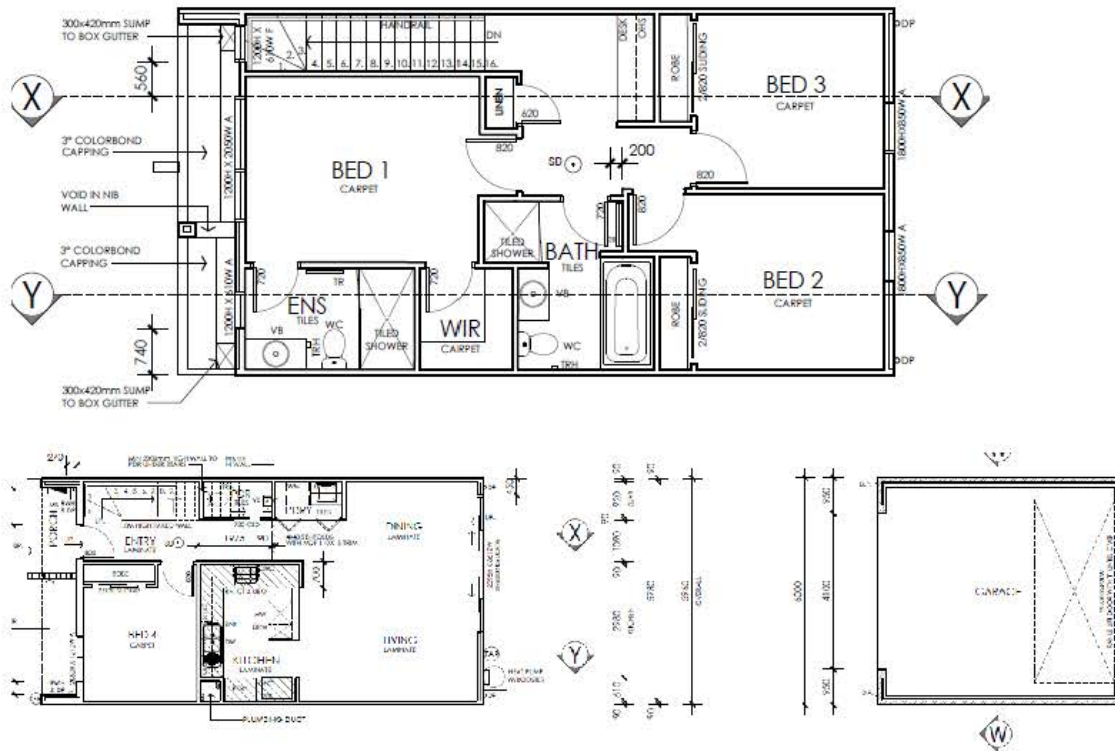


Stephen Beazley

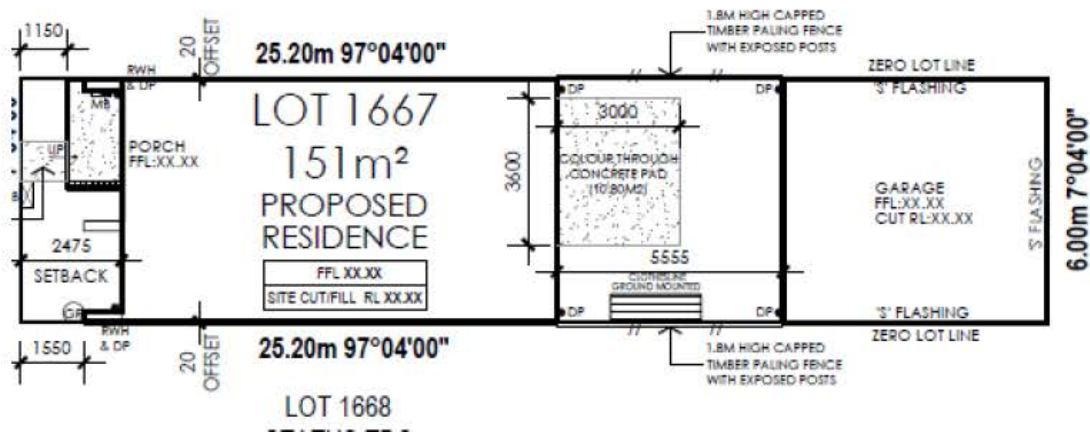
0432496048

stephenbeazley@atrealty.com.au

www.atrealty.com.au



LOT 1666
STATUS TBC



Disclaimer: Please note this floor plan is for marketing purposes and is to be used as a guide only. All dimensions are estimates only and may not be exact measurements.