



SOLD

UNDER OFFER! PRIME CENTRAL LOCATION!

"FERGUSON ESTATE" - GREEN TITLE (NO STRATA FEES)

Nestled on an easy-care 223sqm corner block, this two-storey brick and iron Green Title home features 2 bedrooms, 2 bathrooms, and a study. It overlooks leafy parklands with tall, mature trees in this highly sought-after suburb.

This light and bright, well-maintained residence features ducted reverse-cycle A/C, neutral decor, and open-plan living, including a kitchen, family room, dining space, and a generous breakfast bar with room for bar stools. It also includes stainless steel appliances, plush carpet to bedrooms, a spacious laundry/powder room with ample storage, and a large main bedroom with an ensuite, built-in robe (BIR), and two feature windows overlooking the Charles Street Reserve. Additionally, there's a separate versatile space perfect as a study, formal dining room, or kids' playroom.

A generous north-facing paved alfresco, fully reticulated garden beds, spacious front courtyard, and a double remote garage with a large storage nook, shoppers' entry, and direct garden access, plus additional off-street parking for multiple cars, complete this beautiful home.

Conveniently located close to everything this vibrant suburb has to offer, including essential amenities such as supermarkets, schools, medical and dental centres, beautiful parks and the Maylands Public Library. The picturesque Swan River, and the renowned Maylands Yacht Club and Golf Course are also nearby.

The area is home to the West Australian Ballet Centre, The Rise Community and Recreation Hub, as well as an array of bars, cafés, restaurants, gourmet food outlets, and boutique shops, delivering the perfect blend of culture, convenience, and lifestyle. Plus, major arterial roads and excellent public transport links are easily accessible, making commuting a breeze.

Perfect for first home buyers, families, downsizers or investors, this fantastic opportunity won't last long - BE QUICK!

Features include:

- * Built 2009
- * 2brm x 2bth & study/formal dining room, or kids' playroom
- * 97sqm approx. living
- * 223sqm easy-care block
- * Ducted reverse cycle A/C
- * Beautiful bamboo flooring to living areas and stairs
- * Plush carpets to bedrooms
- * Blockout blinds and curtains

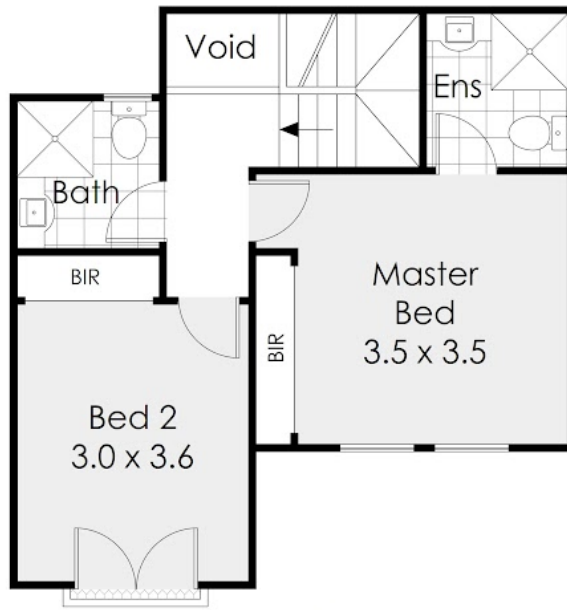
2 BED | 2 BATH | 4 CAR

PRICE:
\$991,000

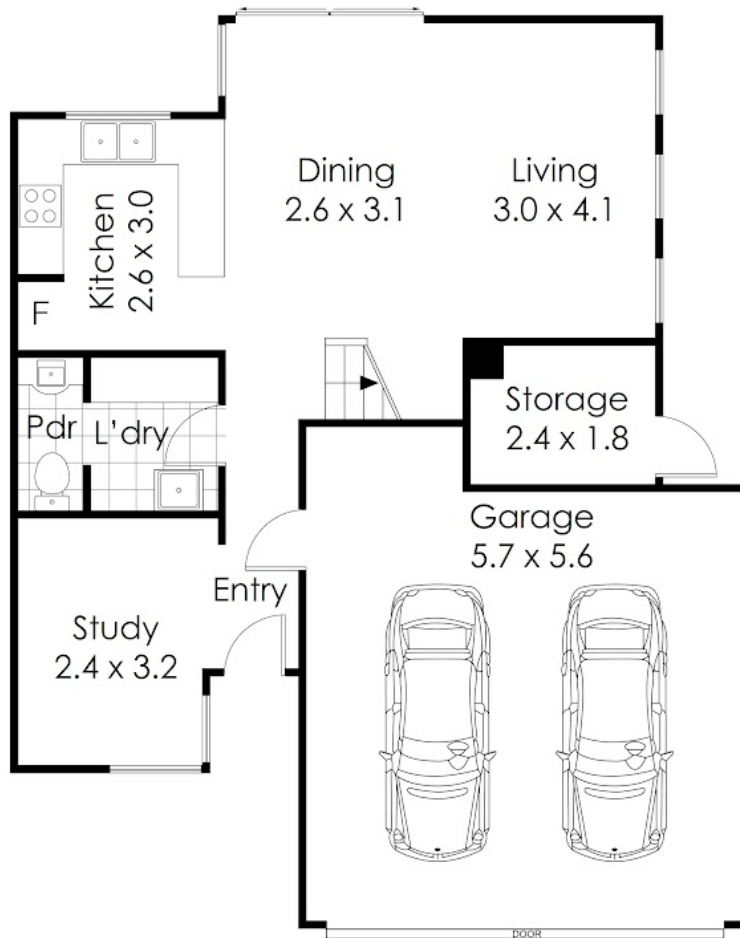
OPEN FOR INSPECTION:
N/A



Louise Neal
0423422721
louiseneal@atrealty.com.au
www.atrealty.com.au



FIRST FLOOR



GROUND FLOOR



Disclaimer: Please note this floor plan is for marketing purposes and is to be used as a guide only. All dimensions are estimates only and may not be exact measurements.