



FOR SALE

NEWLY REFURBISHED IN THE BAY

Nestled in one of Wellington's most prestigious and historically rich suburbs, this residence at Hay Street presents a rare opportunity in the coveted Oriental Bay. Positioned in what is arguably Wellington's most desirable beachside location, this property offers the perfect blend of city convenience and coastal living.

The property enjoys an enviable position in Oriental Bay, where the harmonious marriage of charm and modern coastal living creates an atmosphere of timeless elegance. From your doorstep, you'll be able to embrace the vibrant lifestyle that this sought-after suburb is renowned for.

Oriental Bay's golden sandy beach is just moments away, where the iconic Carter Fountain creates a mesmerising display, especially when illuminated at night. The beautiful Norfolk pines lining the promenade add to the coastal ambiance, creating a picturesque setting for your morning walks or evening strolls.

Living here means you'll be part of a community that values both its historical heritage and modern amenities:

- Just 1.5 kilometers from Wellington's CBD, offering an easy commute
- Stunning beach at your doorstep, perfect for summer activities
- Historic landmarks including the heritage-listed band rotunda and St Gerard's church and monastery
- Access to the popular Freyberg Pool and Fitness Centre
- Excellent dining options, including waterfront restaurants and cafes

Your new neighborhood offers an impressive array of recreational activities:

- Participate in the famous Round the Bays fun run
- Enjoy swimming and sunbathing at Oriental Bay beach
- Take advantage of the coastal walkways and cycling paths
- Experience the vibrant cafe culture and local eateries
- Explore the nearby Mount Victoria walking tracks

Luxe Features

- Full exterior re-clad and new double glazed windows
- Two full bathrooms and two additional WCs

3 BED | 2 BATH | 0 CAR

PRICE:

Price by Negotiation

OPEN FOR INSPECTION:

Aug 24 at 10:45am - 11:30am

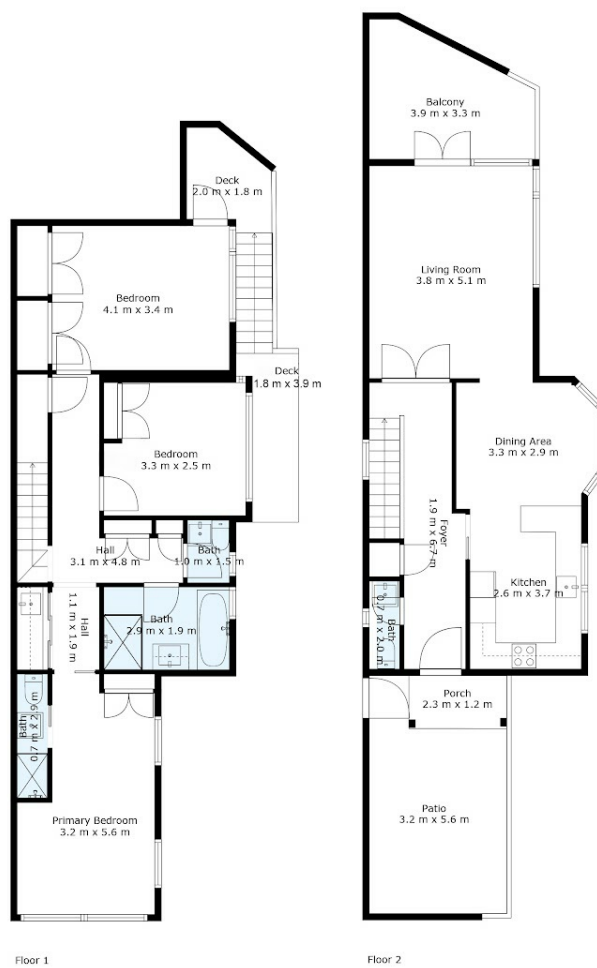


Mike Lovell

0274356007

mike@luxerealty.co.nz

www.luxerealty.co.nz



MEASUREMENTS AND DIMENSIONS ARE APPROXIMATE ONLY. ALL ENQUIRIES MUST BE DIRECTED TO THE AGENT, VENDOR OR PARTY REPRESENTING THIS FLOOR PLAN.



Disclaimer: Please note this floor plan is for marketing purposes and is to be used as a guide only. All dimensions are estimates only and may not be exact measurements.