

4 LANDER STREET, LEUMEAH, NSW, 2560



**SOLD**

## YOUR CHOICE – BUY ONE OR BOTH! CUSTOM-BUILT DUPLEXES IN PRIME LEUMEAH LOCATION!

A rare opportunity awaits in one of Leumeah's most desirable pockets. Two brand-new, custom-designed duplexes being offered. Whether you're looking for a smart investment, dual living, or multi-generational living, this is your chance to secure one or both sides in an unbeatable location. Each home delivers a perfect blend of luxury, light, and lifestyle, with thoughtful finishes and spacious layouts.

Enjoy the convenience of being just moments from local schools, shops, parks, and public transport. All while living in a peaceful, family-friendly street.

### Property Features:

- Brand new, custom-built homes with modern finishes
- Option to purchase one or both sides of the duplex
- Single car garage with internal access
- Spacious downstairs bedroom ideal for in-laws or guests
- Stunning full bathroom with double vanity, LED mirror, and direct laundry access
- Open plan kitchen, living, and dining filled with natural light
- Open Kitchen includes walk-in pantry
- Additional living space at entry, perfect for a sitting area or home office
- Expansive backyard with covered alfresco and outdoor kitchenette
- Large upstairs living area with balcony, ideal retreat for kids
- Four bedrooms upstairs: Two with built-in robes, Two with walk-in wardrobes, including the master
- Luxurious master suite with private ensuite
- Stylish main bathroom with freestanding bathtub
- Ducted air conditioning throughout
- Video intercom system for added security
- Energy-efficient heat pump hot water system to help reduce electricity costs
- Ample storage including under-stair compartment and hallway cupboards
- Duplex on the left: approx. 350sqm | Duplex on the right: approx. 365sqm land sizes

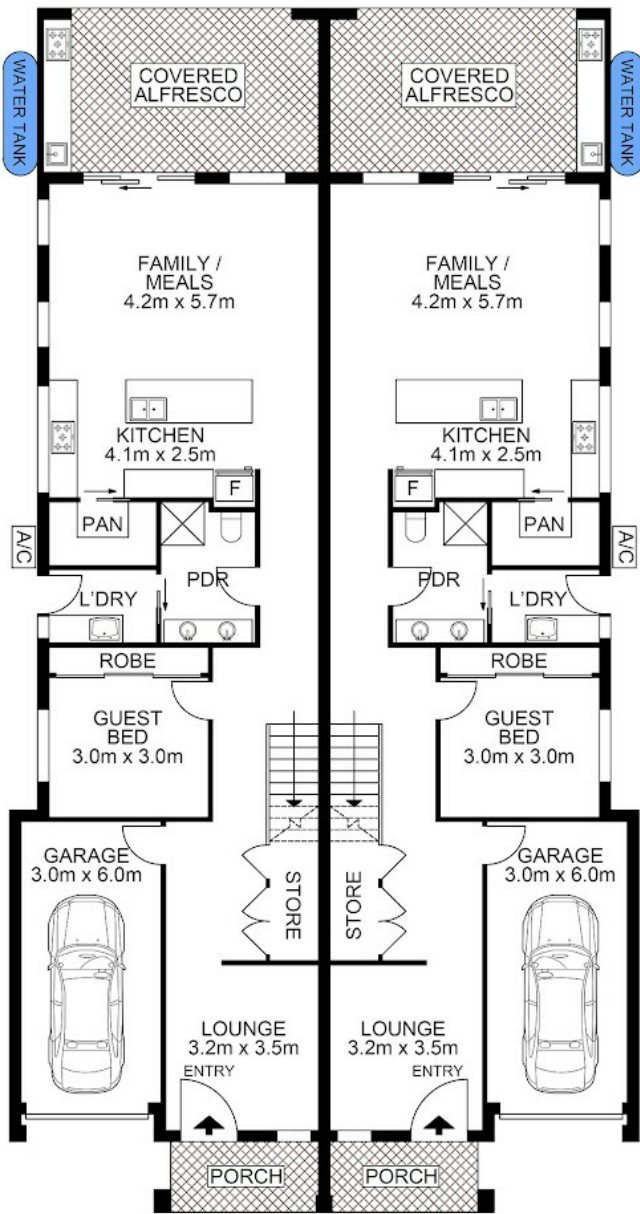
**5 BED | 3 BATH | 1 CAR**

**PRICE:**  
\$2,300,000

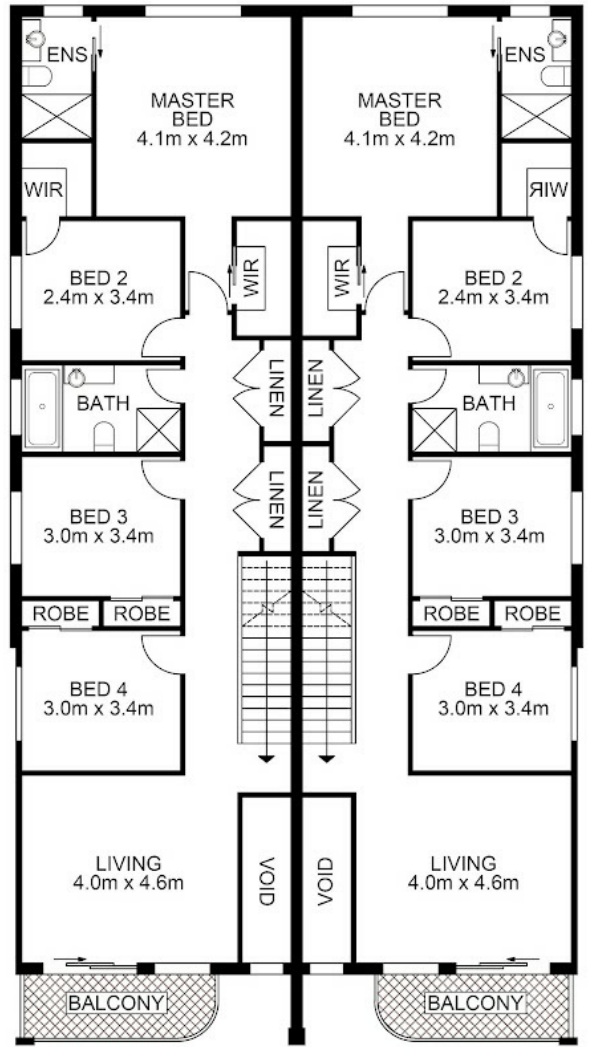
**OPEN FOR INSPECTION:**  
N/A



**Huss Al Salemi**  
**0411699419**  
huss@atrealty.com.au  
[www.agencycentral.com.au](http://www.agencycentral.com.au)



ENTRY LEVEL



UPPER LEVEL



Disclaimer: Please note this floor plan is for marketing purposes and is to be used as a guide only. All dimensions are estimates only and may not be exact measurements.

4 Lander Street, Leumeah

Huss Al Salemi • All measurements are approximate • Drawn for marketing purposes only  
 0411699419  
 huss@atrealty.com.au  
 www.agencycentral.com.au

