



SOLD

GREAT VALUE. QUIET PARKSIDE LOCATION.

Sunlight, space and a touch of future potential - this charming 4 bedroom home is now open to a new generation of wonderful family memories.

With its north-facing aspect, the main bedroom and living area soak up the sunshine, creating a warm and welcoming space to relax in. The generous internal layout flows easily through to a raised rear deck that overlooks natural parkland - perfect for weekend BBQs or keeping an eye on the kids at play. The home is move-in ready today, with the added bonus of renovation potential if you'd like to add your own style over time.

Set in a quiet cul-de-sac amongst other well-kept homes, it's a spot where you'll feel right at home from the start - with space to grow and a community to enjoy. Conveniently positioned, with schools just a short distance away, the location is as practical as it is peaceful. The surrounding leafy streets are safe and welcoming, where kids can ride bikes, and neighbours look out for each other. Come see for yourself - homes like this don't stay on the market for long.

Summary of Features:

- Updated Kitchen w/ Electric Cooktop
- Plantation Shutters to Living & Main Bedroom
- Main Bedroom w/ Bamboo Floors, Ensuite & WIR
- New Vanity & Shower Screen to Main bathroom
- Split System AC to Living
- Downlights Throughout
- Recently Painted Bedrooms
- Raised Rear Deck w/ Pergola
- Detached Single Garage w/ Manual Door
- Quiet Cul-de-Sac Siding Parkland

Key Figures:

Built: 1972
Living: 130sqm (approx.)
Block: 723sqm (approx.)
Rental: \$700-\$750pw (approx.)
EER: 2.5

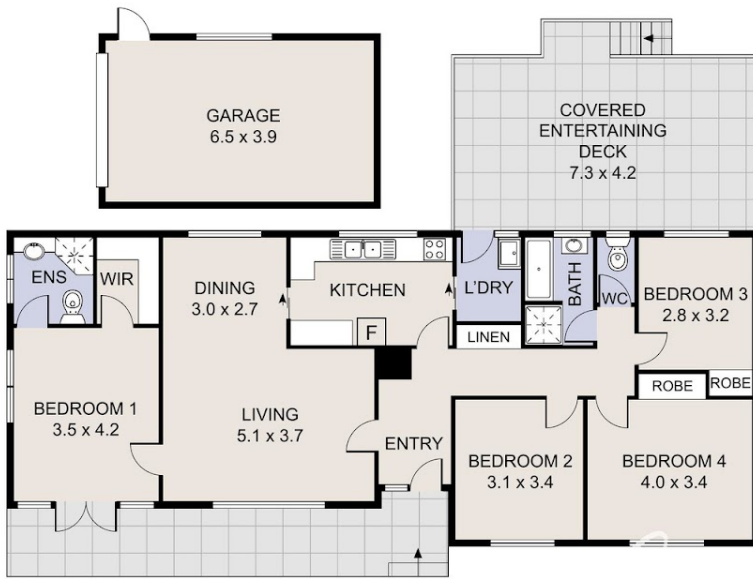
4 BED | 2 BATH | 1 CAR

PRICE:
\$916,000

OPEN FOR INSPECTION:
N/A



Catherine Halloran
0490045819
catherine@thepropertyagents.com.au
www.thepropertyagents.com.au



Disclaimer: Please note this floor plan is for marketing purposes and is to be used as a guide only. All dimensions are estimates only and may not be exact measurements.