



SOLD

UNDER CONTRACT

With 112 square meters of thoughtfully designed living space, this dual key configuration two-bedroom, two-bathroom Peppers Resort apartment represents the pinnacle of coastal sophistication with a flexible ongoing strong income stream.

Step into a world where contemporary elegance meets coastal charm. The fully furnished apartment showcases quality finishes throughout, including stylish floorboards that complement the modern aesthetic.

Resort-style living becomes a daily reality with access to an impressive array of complex facilities:

- Spectacular in-ground swimming pools and outdoor spa for year-round enjoyment
- Full-size tennis court for active lifestyles
- Secure parking
- Day spa and gym

The beach community of Salt Village provides an idyllic lifestyle with modern conveniences:

- Direct access to pristine beaches and waterways
- Extensive network of cycling and walking paths
- Tavern and award winning restaurant's footsteps away

The extensive bike path network, including connections to neighbouring Kingscliff Village and Casuarina, provides endless opportunities for outdoor recreation.

This offering presents the opportunity to secure an affordable bolt hole in one of New South Wales' most sought-after coastal communities. With its perfect blend of luxury, lifestyle, and location, this property stands ready to welcome its new owners to the enviable Kingscliff way of life.

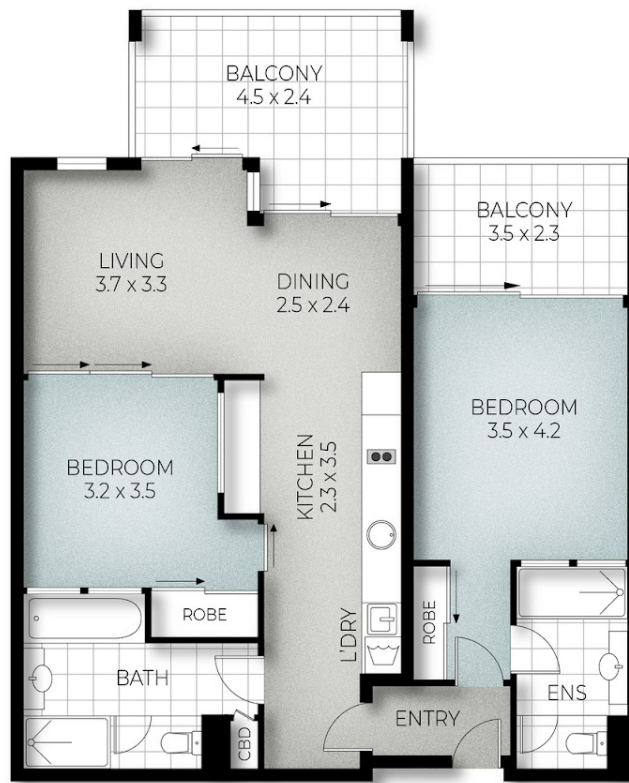
2 BED | 2 BATH | 1 CAR

PRICE:
\$650,000

OPEN FOR INSPECTION:
N/A



Brett Swales
0424507005
brettswales@atrealty.com.au
www.atrealty.com.au



Plans are indicative only. Dimensions are approximate. All information contained herein is gathered from sources we believe to be reliable. However, we cannot guarantee its accuracy and interested persons should rely on their own enquiries

6208-09/1-25 BELLS BOULEVARD, KINGSCLIFF

2 2 1
Internal: 90 m² | External: 20 m² | Total: 110 m²

Disclaimer: Please note this floor plan is for marketing purposes and is to be used as a guide only. All dimensions are estimates only and may not be exact measurements.