



# FOR SALE

## LIVE THE DREAM – SOUL, SURFERS PARADISE

2 BED | 2 BATH | 1 CAR

5204/4 The Esplanade, Surfers Paradise, QLD, 4217

2 Bed + Study / 3rd Bed | 1 Car | 137sqm

Live the ultimate coastal lifestyle in this stunning Beach front apartment at the iconic Peppers Soul, Surfers Paradise. Offering 137sqm of open-plan luxury with uninterrupted ocean views, this home is perfect for both entertaining and relaxing.

Whether you're seeking a permanent holiday lifestyle or a premium addition to your investment portfolio, this apartment delivers the ultimate in luxury living. Perched on the 52nd floor, high above the pristine Surfers Paradise coastline, you'll enjoy endless ocean views from both bedrooms and the open-plan kitchen, living, and dining zones – all styled in soothing neutral tones.

A wraparound balcony frames the apartment's front, offering the perfect vantage point for sunrises, whale watching, or evening drinks.

The master suite invites pure relaxation, with sliding doors opening directly to the ocean-facing balcony. An elegant ensuite and walk-in robe complete this retreat, while the second bedroom is serviced by a modern bathroom. Need extra space? The study is large enough to be a third bedroom. The apartment also includes a laundry and one secure car space.

### PRICE:

Must Sell \$1,785,000

### OPEN FOR INSPECTION:

N/A





**Sam Mansy**  
**0455 501 167**  
sam@mansyestateagents.com.au



**Michael Bolf**  
**0455 499 786**  
michael@mansyestateagents.com.au

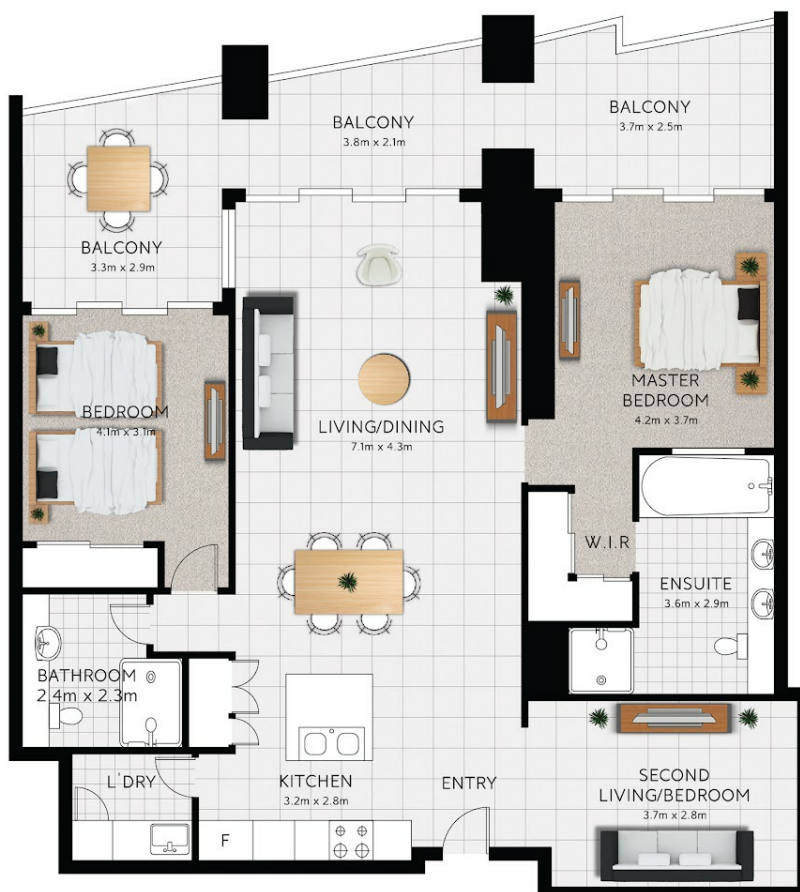
5204/8 Esplanade  
Surfers Paradise

-  3
-  2
-  1

Internal: 112m<sup>2</sup>  
Covered External: 25m<sup>2</sup>  
**Total Floor Area: 137m<sup>2</sup>**

**felt**  
IMAGERY

This plan is for illustrative purposes only.  
Any information provided should not be relied upon solely.  
www.feltimagery.com.au



Disclaimer: Please note this floor plan is for marketing purposes and is to be used as a guide only. All dimensions are estimates only and may not be exact measurements.