



SOLD

MODERN SOPHISTICATION WITH FAMILY LIVING

Discover the perfect fusion of natural beauty and modern sophistication in this exceptional family home, tucked away in the peaceful and highly sought-after Reserve Estate. Offering 4 spacious bedrooms, 2 stylish bathrooms, a generous alfresco area, and a double lock-up garage, this residence is designed with comfort, function, and relaxed elegance in mind.

Step through the front door into a thoughtfully designed floor plan that delivers space, flow, and effortless entertaining. Whether you're hosting family celebrations or enjoying quiet evenings at home, there's room for every moment.

At the heart of the home is a sleek designer kitchen, showcasing premium stainless steel appliances, luxurious stone benchtops, an oversized walk in pantry, and a 900mm freestanding gas oven/cooktop. This culinary haven spills effortlessly into the expansive alfresco area—perfect for weekend barbecues or dining under the stars.

Set on a well-appointed 450m² block, the home is framed by low-maintenance landscaping, giving you more time to enjoy the things you love in a setting designed for ease and tranquillity.

Become part of the vibrant Reserve community, where tree-lined streets lead to lush parklands, playground, and scenic walkways. Embrace an outdoor lifestyle that's both enriching and enviable—making this home not just a place to live, but a lifestyle to love.

Property is now vacant and move in ready.
Potential rental income: \$630 - \$650 per week

Land size: 450m²

HOME FEATURES:

KITCHEN

- Spacious walk in Pantry
- Stone benches
- Stainless steel freestanding Gas cooktop/oven
- Dishwasher

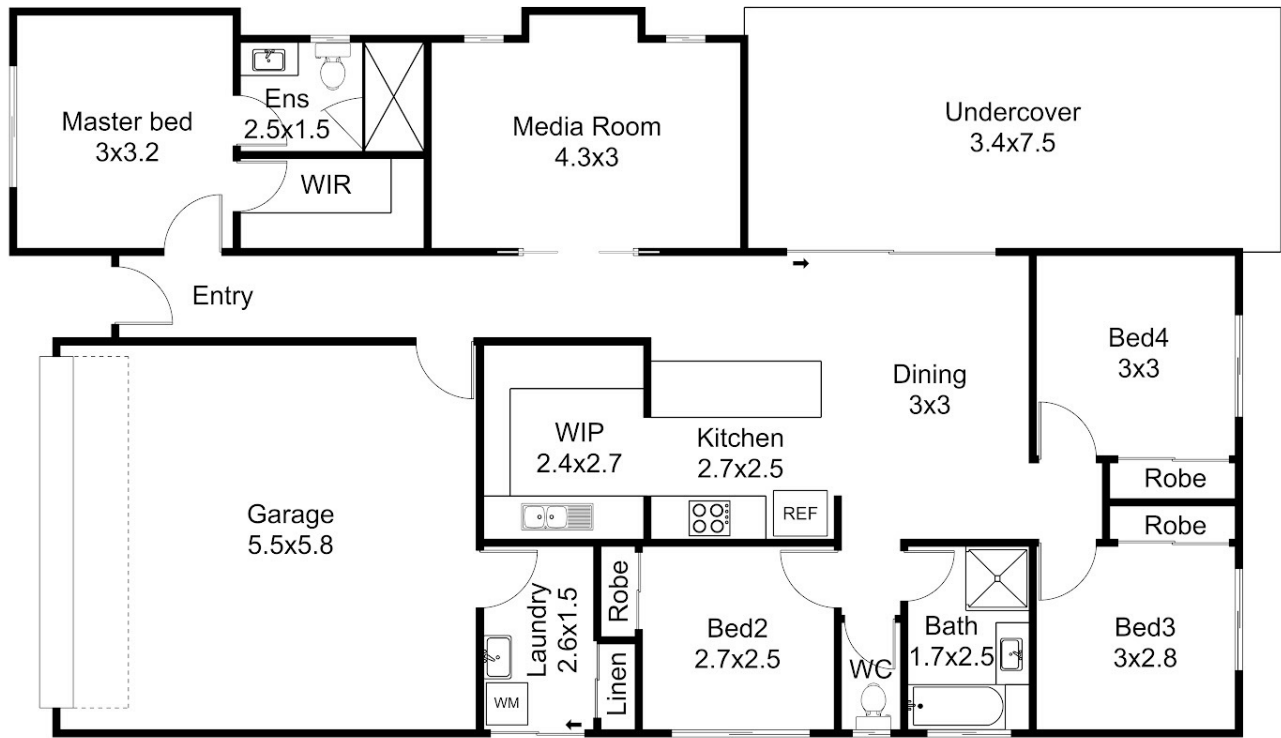
4 BED | 2 BATH | 2 CAR

PRICE:
\$836,000

OPEN FOR INSPECTION:
N/A



Mitchell Younger
0488458887
mitchell.younger@atrealty.com.au
www.atrealty.com.au



Floor plan, measurements and dimensions are approximate and are for illustrative purposes only.
 Pixmo Productions gives no guarantee, warranty or representation as to the accuracy and completeness of the floor plan.

FLOOR PLAN:
 47 RESERVE DRIVE - CABOOLTURE

Disclaimer: Please note this floor plan is for marketing purposes and is to be used as a guide only. All dimensions are estimates only and may not be exact measurements.