



SOLD

SOLD! ANOTHER NEEDED!!

Set on one of Glendowie's most desirable streets, this stunning 262 sqm home offers style, comfort, and space for the whole family. Spread over two levels, it boasts five generous bedrooms and three modern bathrooms, perfectly catering to busy households.

The light-filled living areas flow seamlessly, with a well-appointed kitchen at the heart of the home. Multiple living zones make it easy to entertain guests or enjoy quiet family moments, while the thoughtfully designed layout ensures everyone has their own space.

This home is equipped with solar panels for enhanced energy efficiency and features central heating for year-round comfort.

A double internal-access garage is complemented by off-street parking for up to four more vehicles, making it ideal for visitors or a growing family.

Perfectly positioned on Mount Taylor Drive, it is just moments from quality schools, scenic parks, and the beautiful Eastern Bays beaches.

This is a rare opportunity to secure an exceptional property in one of Auckland's most sought-after suburbs. Contact us today to arrange a private viewing.

FAQ:

Bedrooms: 5

Bathrooms: 3

Garage: 2

Carparks: 4

Floor area: 262 sqm

Land area: 406 sqm (more or less)

Section: Freehold

Construction: Brick & Weatherboard

Year built: 2015

Cooking & Hot water: Gas

Heating: Central heating

Zoning: Residential - Mixed Housing Suburban Zone

Rates: \$5,920.24

5 BED | 3 BATH | 2 CAR

PRICE:

\$1,880,000

OPEN FOR INSPECTION:

N/A

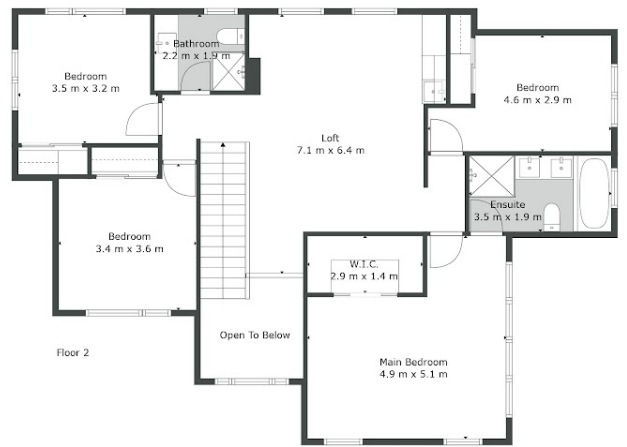
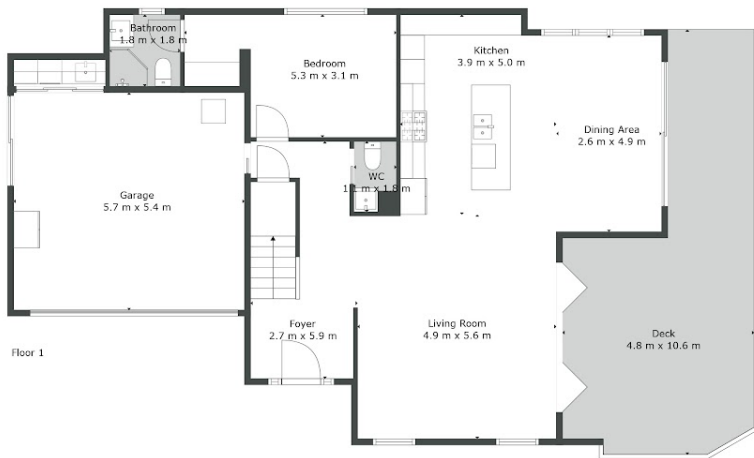


Todd Sherley

021686000

todd@eliterealty.net.nz

www.eliterealty.net.nz



Sizes And Dimensions Are Approximate, Actual May Vary.



Disclaimer: Please note this floor plan is for marketing purposes and is to be used as a guide only. All dimensions are estimates only and may not be exact measurements.