

SOLD

PRIME LUTWYCHE LOCATION, WALKING DISTANCE TO KEDRON BOOK!

Perfectly positioned in one of Brisbane's most sought-after inner-northern suburbs, this apartment on Colton Avenue offers a rare opportunity to enjoy the best of both worlds – urban convenience and suburban charm. Just 5.8km from Brisbane's CBD, this address delivers lifestyle, location, and liveability in one complete package. Only moments from the leafy Kedron Brook and a short stroll to Market Central Lutwyche, this stylish 2-bedroom apartment combines modern comfort with unbeatable access to Brisbane's best transport connections. Whether you're commuting, relaxing, or entertaining, everything is within easy reach.

Apartment Features:

- 2 bedrooms, 2 bathrooms, 1 secure car space
- Fourth-floor position with great natural light
- Main bedroom with walk-in robe and ensuite
- Second bedroom with mirrored built-in robe and nearby bathroom
- Ceiling fans in both bedrooms and split-system air conditioning in the living room and main bedroom

A Lifestyle Location with Everything Close By:

- 5km to Brisbane CBD
- 100m to Kedron Brook Busway
- 150m to Airport Link Tunnel
- 800m to Market Central Lutwyche
- 1km to Woolloowin Train Station
- 4km to Westfield Chermide
- Approx. 10 mins to Brisbane Airport
- Close to Royal Brisbane Hospital & QUT Kelvin Grove

Set just 100m from the scenic Kedron Brook, enjoy 23km of bikeways and hectares of parkland stretching from Mitchelton to Nudgee Beach – the perfect escape from the daily hustle. Whether you're cycling, jogging, walking the dog or simply unwinding, the area invites an active and balanced lifestyle.

Seamless Connectivity

2 BED | 2 BATH | 1 CAR

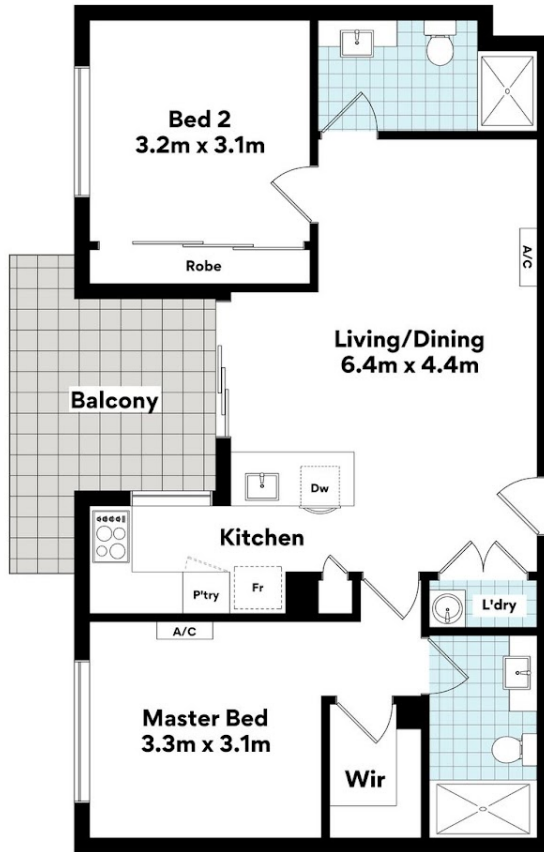
PRICE:
\$715,000

OPEN FOR INSPECTION:
N/A



Crystal McHenry
0423467371

crystal.m@atrealty.com.au
www.atrealty.com.au



**19/25 Colton Ave,
Lutwyche**



FLOOR AREA SIZES

Internal 78m² | External 10m²

TOTAL 88m²

Whilst every attempt has been made to ensure the accuracy of the floor plans contained here, measurements of doors, windows, rooms and any other items are approximate and no responsibility is taken for any error, omission or misstatement.

These plans are for representation purposes only. Provided by primepixels.com.au

Disclaimer: Please note this floor plan is for marketing purposes and is to be used as a guide only. All dimensions are estimates only and may not be exact measurements.