

# SOLD

## MODERN INVESTMENT WITH LIFT, TREETOP VIEWS & SWIMMING POOL

Located just minutes from Darwin's CBD, this stylish apartment in the sought-after Woolner suburb offers the perfect balance of convenience and lifestyle. Set within a secure complex with a communal swimming pool and garage parking, this residence is ideal for investors or city dwellers looking to enjoy low-maintenance living in a peaceful setting.

Step inside and you'll find a bright, breezy layout designed to make the most of the tropical climate. The open-plan living and dining area is tiled throughout, with a well-appointed kitchen featuring wraparound benches, overhead storage, and a breakfast bar. The two generous bedrooms are fully air-conditioned and include built-in robes, with the master enjoying the added benefit of a private ensuite. Unwind on the balcony with tranquil treetop views and cooling afternoon breezes.

### Property Highlights:

- 2 spacious bedrooms with built-in robes and air conditioning
- 2 well-appointed bathrooms, including ensuite to master
- Open-plan living and dining area
- Modern kitchen with breakfast bar and ample storage
- Fully air-conditioned and tiled throughout
- Security screens throughout
- Balcony with views and breezes
- 2 secure off-street car parks
- Complex includes lift, swimming pool and garage parking
- Just 5 minutes to Darwin CBD, Waterfront, and Marina
- Close to schools, shops, and public transport

Currently tenanted until January 2026, this is a ready-made investment in a prime location. Don't miss this opportunity to secure a property that ticks all the boxes for both lifestyle and returns.

### Additional Information:

- Year Built: 2010
- Status: Tenanted – ideal for investors seeking immediate rental income
- Current Rent: \$630 per week

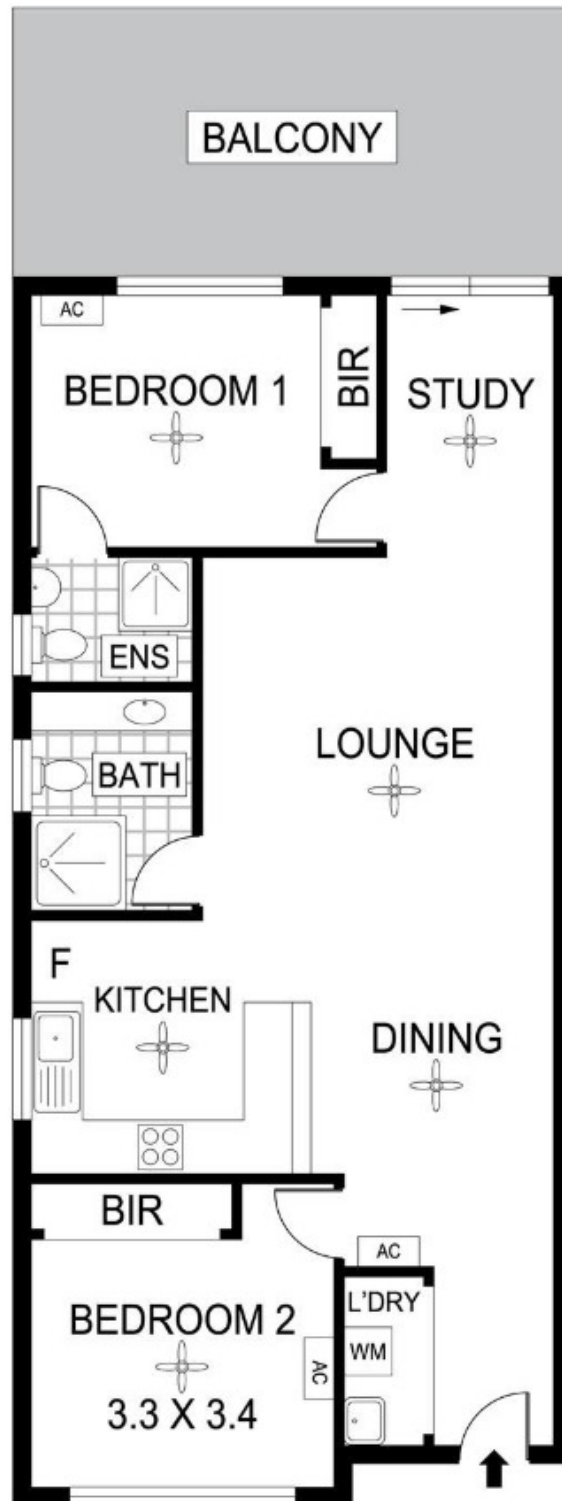
2 BED | 2 BATH | 2 CAR

PRICE:  
\$445,000

OPEN FOR INSPECTION:  
N/A



**Nicole Wheeler**  
0417508800  
nicolewheeler@atrealty.com.au  
[www.atrealty.com.au](http://www.atrealty.com.au)



Disclaimer: Please note this floor plan is for marketing purposes and is to be used as a guide only. All dimensions are estimates only and may not be exact measurements.

Scale in metres. Indicative only. Dimensions are approximate. All information contained herein is gathered from sources we believe to be reliable. However we cannot guarantee its accuracy and interested persons should rely on their own enquiries