



**SOLD**

## SPACIOUS FAMILY HOME WITH HUGE SIDE ACCESS & COVERED ENTERTAINMENT AREA

### Special Features

- Separate Formal Lounge, spacious open-plan Living and Dining area
- Family Size Modern Bathroom & separate Toilet
- Solar Panels & Rain Water Tank to save on bills
- Great sized covered entertainment area for year-round outdoor fun.
- Rare huge side access for caravan, motorhome, work or extra vehicles
- Massive Shed, fruit trees & Canopy House to grown your own vegetables.

### Key Features

- 4 spacious bedrooms (3 with built in robe), Modern Bathroom & Separate Toilet
- Reverse Cycle Air-con in the main area & Ceiling Fans in all bedrooms, lounge & dining area.
- Security screens installed for peace of mind
- Spacious Kitchen with loads of cupboard spaces
- Separate good size laundry.
- Will come move in ready Vacant, Professionally Cleaned & Pest Control done.

### Property Description

Welcome to this beautiful Solid Brick home on a peaceful family friendly street on a huge 726m<sup>2</sup> block.

Whether you're looking for a first home, a downsizer's retreat, or a high-performing investment, this property ticks all the boxes. Alongside its spacious design, this home includes Solar Power system and Rain Water Tank, helping you cut down on energy and utility costs while living more sustainably.

Featuring 4 generous bedrooms, a family-sized bathroom with a separate toilet, and a secure lock-up garage with rare, extra-wide side access – perfect for parking caravan, boat or extra vehicles. You'll love the huge covered entertaining area and the extra-large garden shed with plenty of room for all your tools. This home has everything your family needs and more – it really does tick all the boxes.

### Amenities Nearby

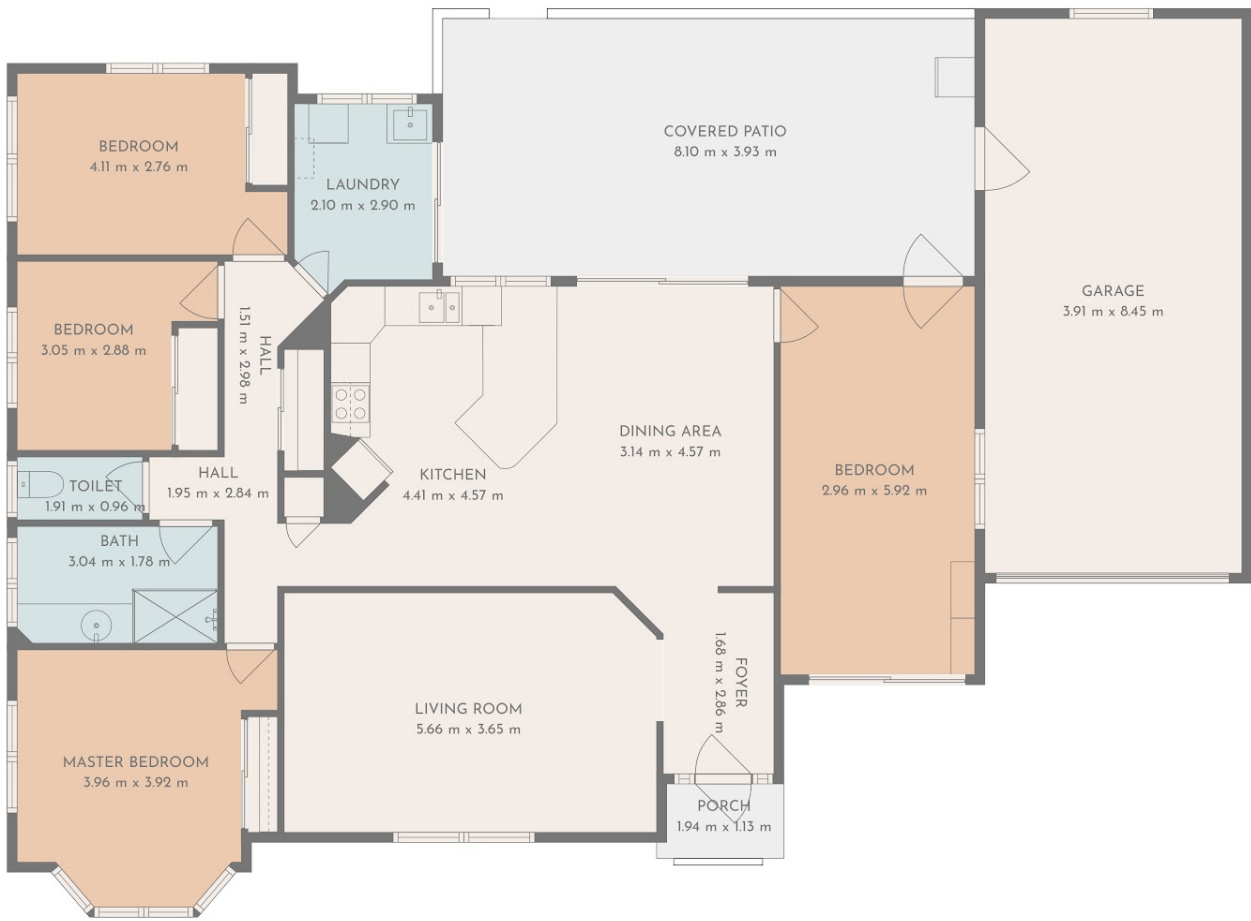
4 BED | 1 BATH | 1 CAR

PRICE:  
\$655,000

OPEN FOR INSPECTION:  
N/A



**Maruf Ahmed**  
**0469661761**  
maruf@atrealty.com.au  
[www.atrealty.com.au](http://www.atrealty.com.au)



Disclaimer: Please note this floor plan is for marketing purposes and is to be used as a guide only. All dimensions are estimates only and may not be exact measurements.