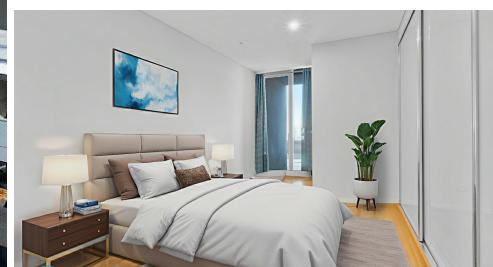


Unit 226 - L  
Main Bal

# SOLD

**FABULOUS, 127 SQM, LEVEL 14 WITH VIEWS,  
STEPS TO LIGHT RAIL TO PARRAMATTA, TWO  
BALCONIES, MASSIVE STORAGE CAGE,  
CARLINGFORD WEST CATCHMENT!**

CALL 7 DAYS TO INSPECT!

Day care in next building , supermarket in the complex, light rail in front , straight to Parramatta CBD!

Located in the heart of Carlingford, this modern two-bedroom, two-bathroom Level 14, 127 sqm apartment offers an ideal blend of contemporary living and suburban convenience. Designed for comfort and practicality, the property features an open-plan living area that seamlessly connects to a big modern kitchen, complete with an island bench top. The two generously sized bedrooms come with built-in wardrobes, while the master enjoys the added luxury of an ensuite. There are two balconies ,main bedroom has its own private balcony plus second bedroom and lounge open to a large main balcony with plenty of afternoon sun

Perfectly suited for families, professionals, or investors, this residence is positioned within a thriving community. Proximity to local schools, shopping centres, and public transport makes daily living effortless. Carlingford Court Shopping Centre, Carlingford Public School, and Carlingford Light Rail Station are all within easy reach, ensuring that both relaxation and convenience are at your doorstep.

Venture outside and a plethora of Carlingford's amenities beckon you! Walk to local eateries and pick up a take away coffee, or stroll down to Carlingford Village to access a variety of retail outlets and services. The Carlingford Light Rail is across the road making light work of your morning commute, and the property is within the catchment of reputable schools including Carlingford West Public School. Acres of parklands and reserves are also nearby, as is the library, sports fields and the local bowls club. There is something for everyone!

WHAT WE LIKE ABOUT THE PROPERTY:

- Two spacious bedrooms with built-in wardrobes, including the master bedroom with private balcony access

**2 BED | 2 BATH | 1 CAR**

PRICE:  
\$640,000

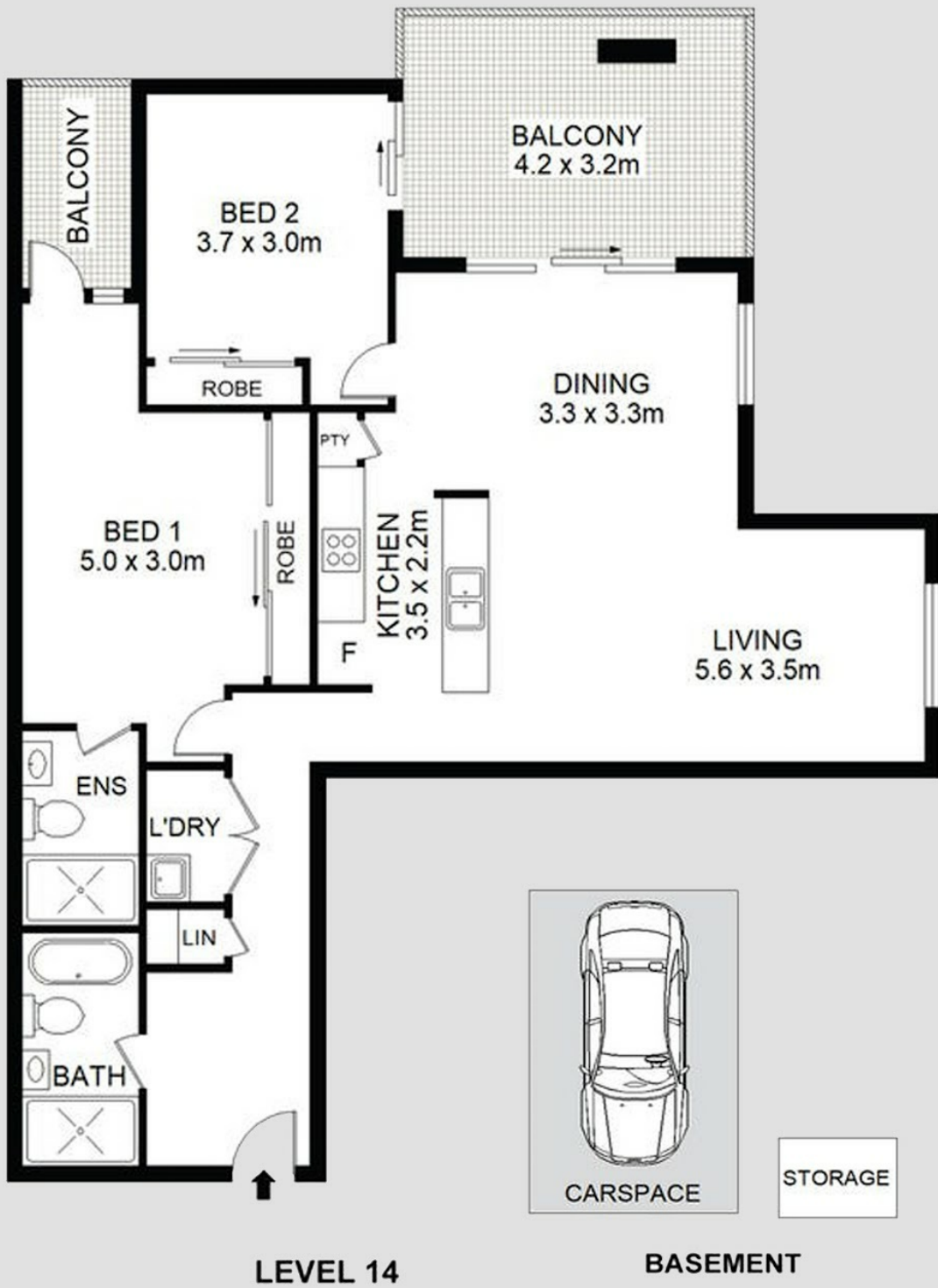
OPEN FOR INSPECTION:  
N/A



**Vivek Uppal**  
**0426425839**

vivekuppal@atrealty.com.au

[www.atrealty.com.au](http://www.atrealty.com.au)



Disclaimer: This floor plan is for illustrative purposes only. All measurements are approximate and not to scale. While every effort has been made to ensure accuracy, interested parties should rely on their own enquiries.

Disclaimer: Please note this floor plan is for marketing purposes and is to be used as a guide only. All dimensions are estimates only and may not be exact measurements.

