



**SOLD**

## UNDER OFFER

This charming three-bedroom home on Correena Avenue presents an exceptional opportunity in Paralowie's established residential landscape. Nestled on a generous 665 square metre (approx.) allotment with a 19m (approx.) frontage, this well-appointed house combines comfort with convenience in one of Adelaide's northern growth corridors.

Step inside to discover thoughtfully designed living spaces that cater to modern family life. The home features three comfortable bedrooms, the main with built-in wardrobes for optimal storage. An open plan lounge and dining area provides the perfect retreat for relaxation, while air conditioning ensures year-round comfort throughout the home.

- Three bedrooms main with built-in wardrobes.
- New carpets throughout.
- Single bathroom with separate shower.
- Comfortable lounge room for family gatherings
- Air conditioning for climate control
- Single carport with rear lockable gates for secure vehicle accommodation

The substantial land area provides ample room for children to play, potential gardens, or future extensions, making this property perfect for families looking to grow and establish roots.

Paralowie offers an appealing lifestyle choice for families, within walking distance to local schools shops and public transport.

- Easy access to Paralowie R-12 School.
- Excellent connectivity to Adelaide CBD, just 21.4 kilometres south
- Family-friendly neighbourhood with parks and recreational facilities

This property represents more than just a house – it's an opportunity to join a thriving community where families can establish lasting roots. The combination of practical features, generous land size, and prime location makes this an ideal choice for those seeking their next family home in Adelaide's northern suburbs.

RLA 269823

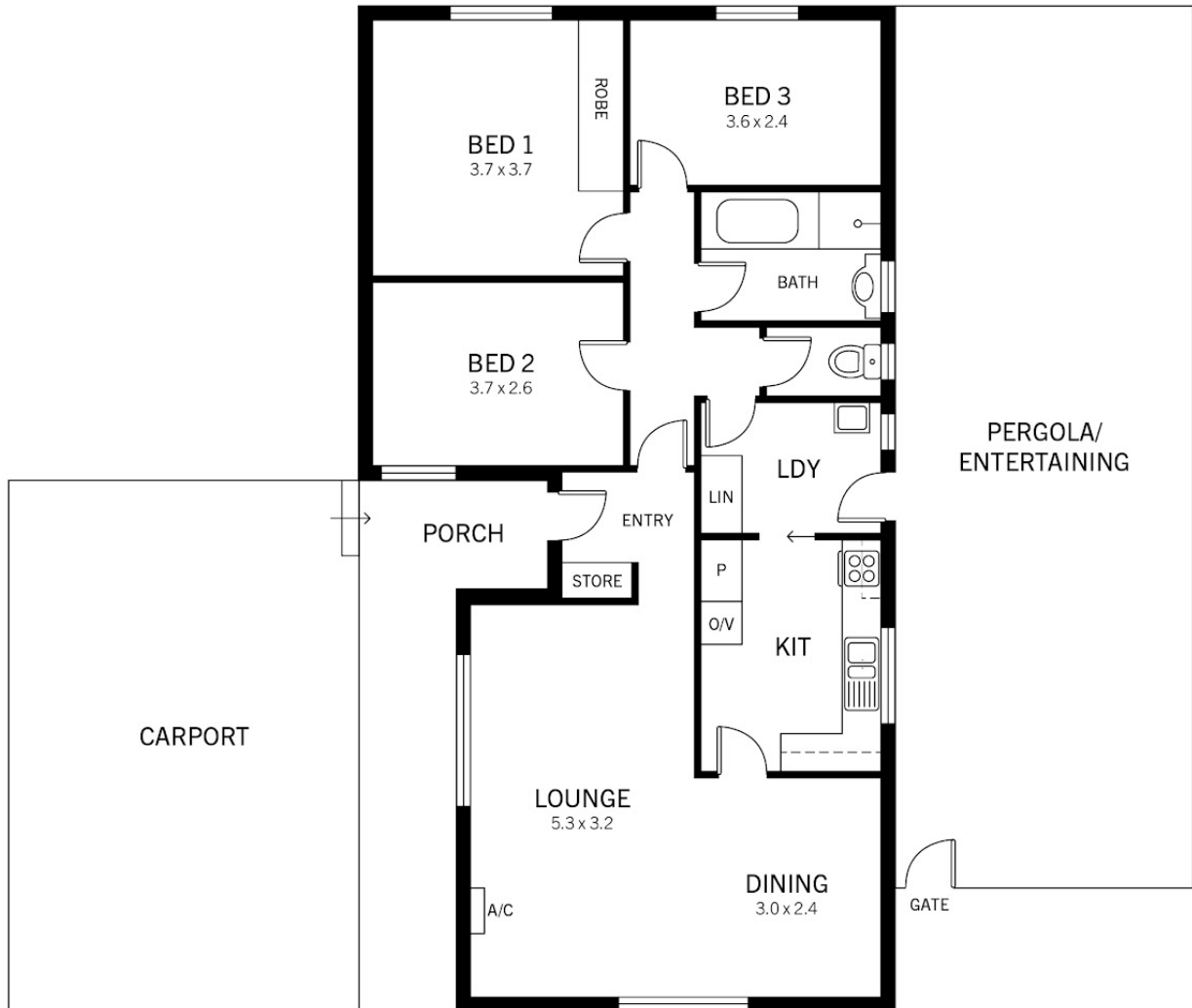
**3 BED | 1 BATH | 1 CAR**

**PRICE:**  
**\$710,000**

**OPEN FOR INSPECTION:**  
**N/A**



**Darren Bayford**  
**0403776577**  
dbayford@atrealty.com.au  
[www.atrealty.com.au](http://www.atrealty.com.au)  
RLA: 269823



## 34 Correena Ave, Paralowie

DISCLAIMER: Floorplan and area calculation are approximate and for illustration purposes only.  
Produced by **Property Portraits**

Interior	87m <sup>2</sup>
Exterior	96m <sup>2</sup>
Garage	9m <sup>2</sup>

**192m<sup>2</sup>**  
TOTAL

Disclaimer: Please note this floor plan is for marketing purposes and is to be used as a guide only. All dimensions are estimates only and may not be exact measurements.