



SOLD

FOUR BEDROOM FAMILY BEAUTY IN CRAIGMORE

Welcome to 56 Somerset Grove, Craigmore!!

This striking 4-bedroom home presents an exceptional opportunity in one of Craigmore's most desirable estates. This residence combines modern comfort with practical family living across a generous 601 square metre block. Step inside to discover this amazing home that has been stripped right back and renovated to the highest quality!

This thoughtfully designed home offers living spaces that prioritise both relaxation and entertainment, inside and out. The home features a comfortable lounge area, while four well-proportioned bedrooms with built-in robes provide ample accommodation for growing families. The walk-through bathroom with a 12 jet spa bath services the home efficiently, complemented by practical storage solutions throughout. The heart of the home is one of the countless examples as to why you'll fall head over heels in love with 56 Somerset Grove, Craigmore.

This stunning kitchen has been updated with top of the range Asko appliances, (oven, cooktop & dishwasher) with a Schweigen silent rangehood. Plumbing to the fridge is available for those of you who prefer fresh, cold filtered water & fresh flowing ice from your fancy fridges during the summer months and climate control is never a concern with this property's impressive heating and cooling arsenal...

Why you'll fall in love with this AMAZING home:

- * Braemar ducted, zoned gas heating.
- * Bonaire evaporative cooling for those warm Adelaide summers.
- * Huge Daikin 6kW Split system air conditioning for targeted temperature control for those more humid days.
- * 6kW Fronius inverter solar panel system (26 panels) with smart meter, reducing energy costs while supporting sustainable living.
- * Whole roof restoration completed less than 2 years ago.
- * Outdoor, plumbed kitchen complete with rangehood.
- * Outdoor entertaining area with roller-shutters to completely enclose the area for the winter months.

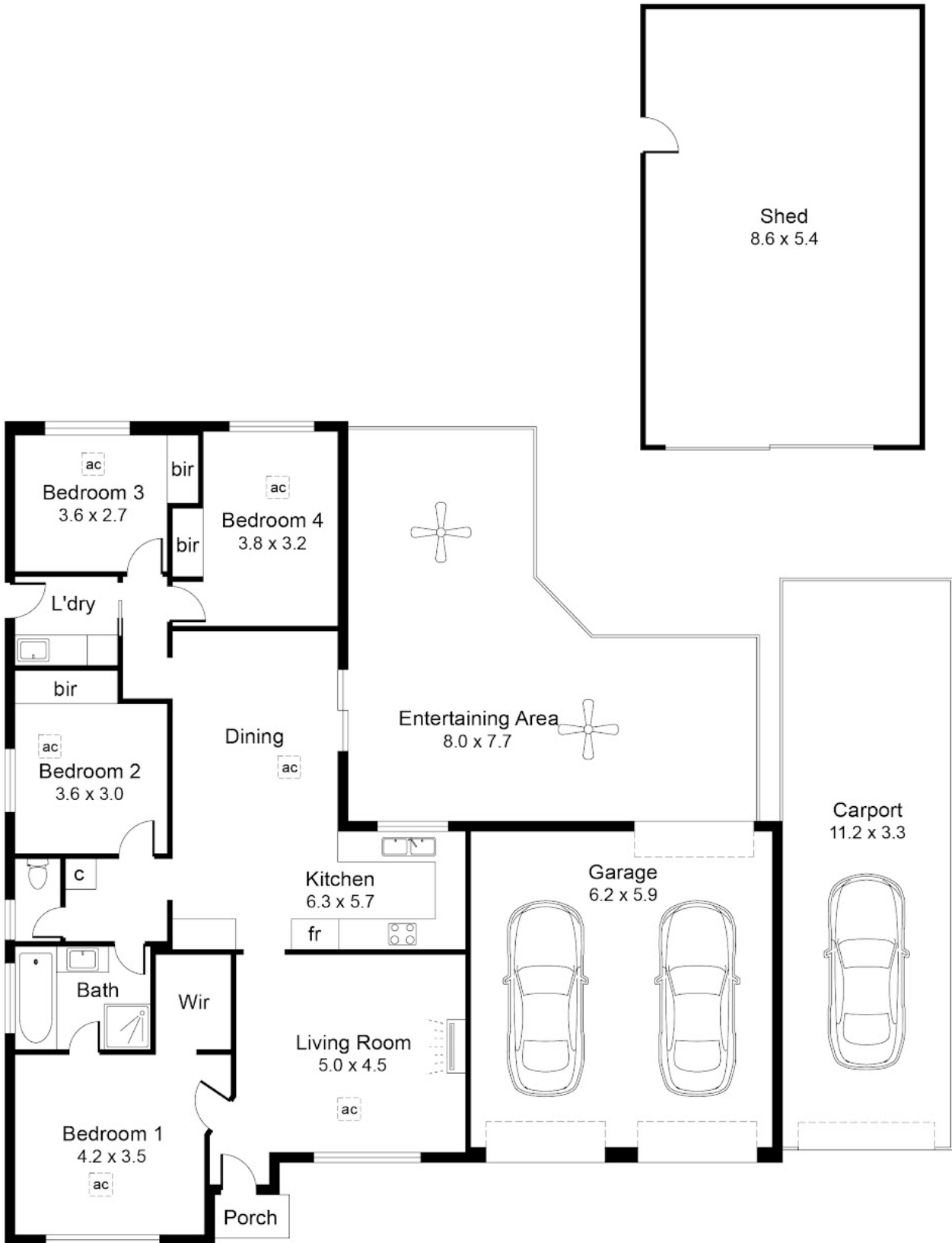
4 BED | 1 BATH | 5 CAR

PRICE:
\$770,000

OPEN FOR INSPECTION:
N/A



Nicola Jones
0400330222
nicola@atrealty.com.au
www.atrealty.com.au
RLA: 269823



280m² 113m² 167m²

Disclaimer: Please note this floor plan is for marketing purposes and is to be used as a guide only. All dimensions are estimates only and may not be exact measurements.