



Brian Bolton @realty

SOLD

CLASSIC QUEENSLANDER CHARM, MASSIVE FLAT BLOCK !

Close to the centre of Gordonvale township and built on an impressive 1,012m2 flat block, this charming highset Queenslander with Pyramid views and a fully fenced yard is sure to impress.

Step inside to discover a thoughtfully designed home featuring beautiful polished floorboards throughout, creating warmth and character in every room. The modern kitchen comes complete with a dishwasher, making meal preparation and cleanup a breeze. The home boasts a family bathroom upstairs, with an extra bathroom with shower & toilet facilities downstairs.

- High Ceilings, Casement Windows, Tongue & Groove Walls
- Split System Air Conditioning
- Combined Kitchen & Dining
- Formal Dining / Living Area & Office

The outdoor living spaces truly set this property apart from the rest. A generous rear balcony to entertain family and friends and a front porch to sit and enjoy your morning coffee as you ease into your day ahead.

Downstairs is fully enclosed, there is a concrete slab, laundry facilities and so much storage space. There is also secure parking for 1 vehicle. The two bay iron shed positioned at the rear of the property adds to secure parking for 2 vehicles.

- Space For A Boat + Caravan + Trailer
- 6m x 6m Iron Shed

Close to nearly all amenities including shops, cafes, doctors, schools (private & public), sporting facilities and much more.

For More Information Or Your Private Inspection
Phone Brian Bolton on 0402 440 098
@realty

Disclaimer: Information is sourced from reliable providers but not guaranteed. The Agent and

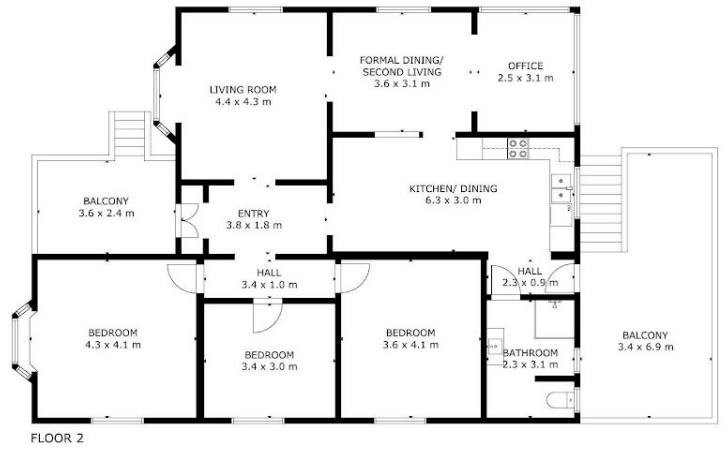
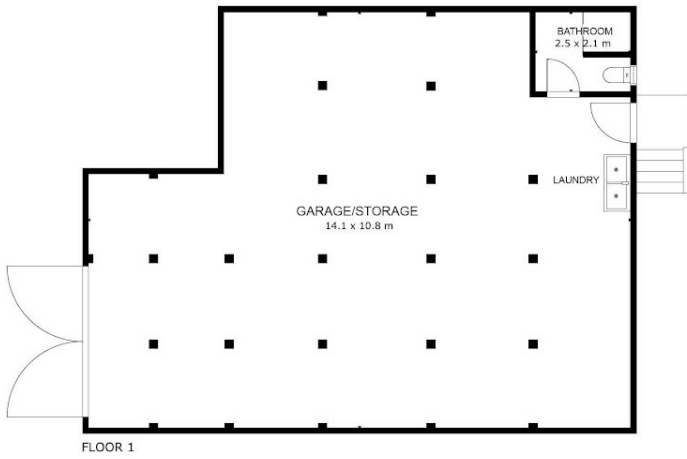
3 BED | 2 BATH | 3 CAR

PRICE:
\$580,000

OPEN FOR INSPECTION:
N/A



Brian Bolton
0402440098
brianbolton@atrealty.com.au
www.atrealty.com.au



SIZE AND DIMENSIONS ARE APPROXIMATE, ACTUAL MAY VARY



Disclaimer: Please note this floor plan is for marketing purposes and is to be used as a guide only. All dimensions are estimates only and may not be exact measurements.

