

SOLD

LIFESTYLE PERFECTLY POSITIONED IN TIKITERE!

Welcome to this beautifully presented 6,887 sqm lifestyle property, perfectly positioned in the heart of Tikitere. Located just across from the iconic Hell's Gate Thermal Reserve and Spa, and only 20 minutes from Rotorua city center, this peaceful retreat offers the perfect balance of rural living with city convenience. Ruato Bay on Lake Rotoiti is just a 7-minute drive away – ideal for boating, fishing or weekend picnics.

Inside you'll be greeted by a sun-filled interior, thoughtfully renovated with modern touches throughout. The home features three generous bedrooms, including a spacious master with an ensuite and a cosy music or reading nook – perfect for relaxing at the end of the day.

The stunning new kitchen is the heart of the home, showcasing stone benchtops, sleek appliances, and an open-plan design that flows effortlessly into the dining, family area, and large study or second living space. Large French doors lead out to a spacious patio – ideal for entertaining or simply enjoying the peaceful surroundings. A separate sunken lounge with a new fireplace offers a warm and inviting space to unwind year-round.

Additional features include:

- Freshly painted interiors in a soft, neutral palette
- Brand-new carpet and tiles throughout
- Recently upgraded hot water cylinder for energy efficiency
- Double internal access garage plus a separate double garage with workshop – perfect for hobbies, projects or extra storage for boats, bikes and toys

Outdoors, the lifestyle continues. Enjoy the tranquil pond, newly fenced paddocks (ideal for pets or hobby farming), and plenty of open space for kids to roam or for gardening enthusiasts to thrive.

This is more than a home – it's a lifestyle opportunity where nature, comfort and convenience come together. With easy access to Rotorua's geothermal wonders and the stunning natural playground of Lake Rotoiti, your weekends will be filled with adventure, relaxation and beauty.

For more information or to arrange a viewing contact Julz or Bryn.

3 BED | 2 BATH | 4 CAR

PRICE:
\$895,000

OPEN FOR INSPECTION:
N/A

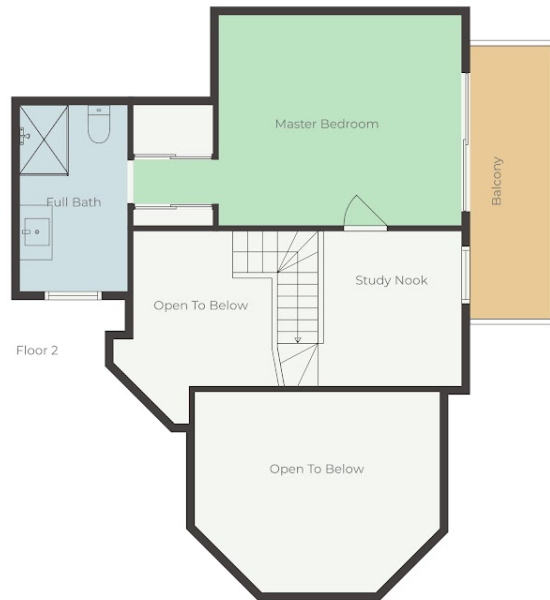


Maree Tassell

0274866146

maree@ifindproperty.co.nz

iSell Property



Floor Plan Created By Cubicasa App. Measurements Deemed Highly Reliable But Not Guaranteed.

Disclaimer: Please note this floor plan is for marketing purposes and is to be used as a guide only. All dimensions are estimates only and may not be exact measurements.