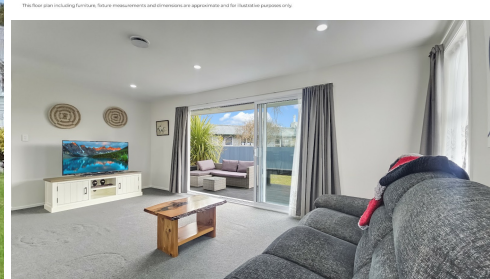


6 WARIHI PLACE NGONGOTAHĀ



FOR SALE

FAMILY COMFORT, FANTASTIC LOCATION

Welcome to 6 Warihi Place – a warm, low-maintenance family haven perfectly positioned in the heart of Ngongotaha. With double glazing and an HRV system, you'll enjoy a dry, cosy home all year-round.

Step outside and discover the fully fenced section, providing peace of mind for children and pets to play safely. The modern Total Span double garage adds secure parking and workshop potential.

The location offers exceptional lifestyle opportunities with Lake Rotorua's western shores and world-class trout fishing in the Ngongotaha Stream nearby.

Mount Ngongotaha towers majestically above the suburb, offering mountain bike trails, Skyline Skyrides and the popular Wingspan National Bird of Prey Centre for family adventures. Located just a short stroll from Ngongotaha Primary School, local shops, cafes, the Ngongotaha Railway Park, and Lake Rotorua. Sports lovers will appreciate the nearby rugby grounds and bowling green, while commuters benefit from Bus Route 1 with a stop close by on Ngongotaha Road.

Whether you're starting your property journey, upsizing for the family, or seeking a solid investment, 6 Warihi Place offers comfort, convenience, and community – all in one.

Don't miss out – call Bryn or Julz to view.

3 BED | 1 BATH | 2 CAR

PRICE:

Price by Negotiation

OPEN FOR INSPECTION:

Sep 14 at 12:00pm - 12:30pm



Bryn Parry

0273672796

bryn@isellproperty.co.nz

iSell Property



FLOOR PLAN

This floor plan including furniture, fixture measurements and dimensions are approximate and for illustrative purposes only. BoxBrownie.com gives no guarantee, warranty or representation as to the accuracy and layout. All enquiries must be directed to the agent, vendor or party representing this floor plan.

6 Warihi Place

Disclaimer: Please note this floor plan is for marketing purposes and is to be used as a guide only. All dimensions are estimates only and may not be exact measurements.