

SOLD

STUNNING DOUBLE STOREY CORNER BLOCK HOME FOR SALE

Elegant Family Home with Modern Design and Spacious Living:

A luxury spacious double storey home Located in a quiet, family-friendly pocket of Leppington offers comfort, functionality, and modern stylist features. This contemporary designed home comes with 4 generously sized bedrooms and a theatre room, 3 toilets ,2 showers and 2 double garages plus 2 car ports that suites large family to live in a peaceful and environmentally clean location. Master bedroom comes with a private ensuite and walk-in wardrobe. Open living and dining areas make the home look stunning with exclusive combinations of high-quality fittings. Kitchen comes with gas cooktop, stone benchtops, and ample storage plus upgraded living areas centred around a stylish electric fireplace with TV and extra height ceiling make it look truly amazing.

Key inclusions:

- Master bedroom comes with a private ensuite and walk-in wardrobe
- Powder room for added convenience
- 3 generously sized bedrooms – all with walk-in wardrobes
- Large bathroom + separate toilet
- Home theatre
- Laundry upgraded with extra cabinets and
- Upper living area – perfect as a second lounge or kids' retreat
- Study nook and storage room
- Remote control gate for garage access
- Main door comes smart lock with camera.
- Home security System
- Solar Panel installed
- Ducted air condition
- High ceiling
- Landscaped Lawn and garden-ideal for children and outdoor living
- Three elegant crystal chandeliers above the dining, living and staircase
- Large decorative framed mirror – enhances light and space
- Interior and exterior fitted with modern lightings.
- Exclusive wooden on the floor and exclusive carpet on though out the home
- Built in 2023 with one of the famous builders.
- All the bathrooms and toilets come with exclusive fittings.

4 BED | 5 BATH | 4 CAR

PRICE:

\$1,360,000

OPEN FOR INSPECTION:

N/A

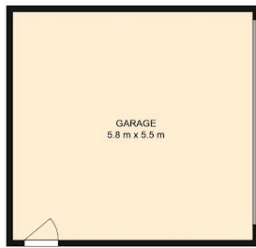


Shah Kamal

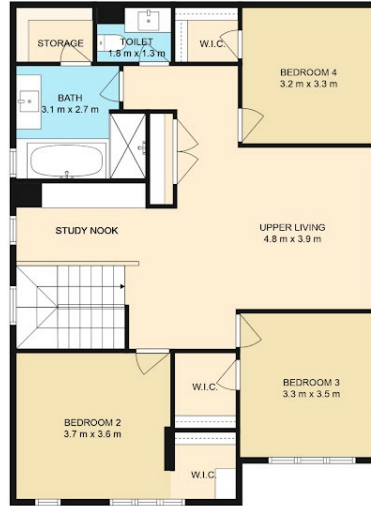
0468466606

shah.kamal@atrealty.com.au

www.atrealty.com.au



Ground Floor



First Floor

230 Rainbows Way, Leppington

Disclaimer: Please note this floor plan is for marketing purposes and is to be used as a guide only. All efforts have been made to ensure its accuracy.

Disclaimer: Please note this floor plan is for marketing purposes and is to be used as a guide only. All dimensions are estimates only and may not be exact measurements.