



SOLD

PRIME INVESTMENT OPPORTUNITY: MODERN 2-BEDROOM APARTMENT ON DARWIN ESPLANADE

Seize this rare chance to invest in a premium 2-bedroom, 2-bathroom apartment perfectly positioned on the iconic Darwin Esplanade, NT 0800. Boasting stunning city views, this property offers strong returns and long-term growth potential in a thriving rental market.

Key Features:

- Spacious Layout: 2 generous bedrooms, 2 bathrooms (including an ensuite for added luxury).
 - Secure Parking: 2 dedicated carparks for convenience and tenant appeal.
 - Breathtaking Views: Uninterrupted city vistas, a standout feature for tenants.
 - Strong Rental Income: Currently leased at \$675/week until 2/12/2025, ensuring immediate cash flow.
 - Attractive Yield: Impressive net return of 5.5%, ideal for savvy investors.
 - Prime Location: Situated on the prestigious Darwin Esplanade, close to vibrant dining, shopping, and business hubs.
- Why Invest?**
This modern apartment combines lifestyle and investment appeal in one of Darwin's most sought-after locations. With a secure lease in place and high tenant demand, this property delivers consistent returns and low vacancy risk. Perfect for investors seeking a hassle-free, high-yield asset in a growth market.

Act Now!

Don't miss this opportunity to secure a premium property with strong rental performance and capital growth potential. Contact us today for more details or to arrange an inspection.

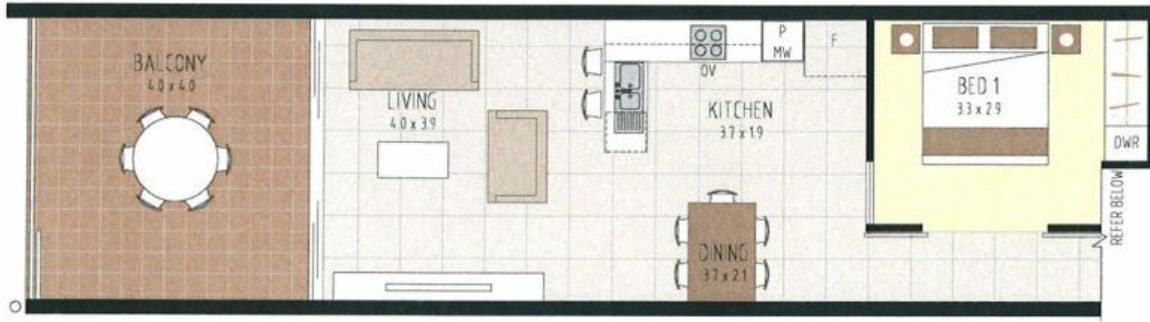
2 BED | 2 BATH | 2 CAR

PRICE:
\$475,000

OPEN FOR INSPECTION:
N/A



Byron Wauchope
0424181530
byron@atrealty.com.au
www.atrealty.com.au



- LEVEL 11 APARTMENT 1109
- LEVEL 10 APARTMENT 1009
- LEVEL 9 APARTMENT 909
- LEVEL 8 APARTMENT 809
- LEVEL 7 APARTMENT 709
- LEVEL 6 APARTMENT 609
- LEVEL 5 APARTMENT 509
- LEVEL 4 APARTMENT 409

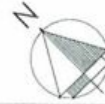
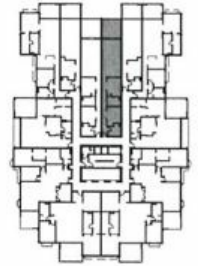
2 BED APARTMENT TYPE F

INTERNAL	85m ²
EXTERNAL	16m ²
TOTAL	101m ²

C2 ESPLANADE, DARWIN

2 BED APARTMENT TYPE F

This document is for the project described and is not to be used for any other purpose. It is the responsibility of the user to ensure that the information provided is accurate and up to date. The information provided is for general information only and is not intended to constitute an offer of any financial product. The information provided is for general information only and is not intended to constitute an offer of any financial product. The information provided is for general information only and is not intended to constitute an offer of any financial product.



09-05-8

Disclaimer: Please note this floor plan is for marketing purposes and is to be used as a guide only. All dimensions are estimates only and may not be exact measurements.