



# SOLD

## CHERISHED BY ONE FAMILY – READY FOR THE NEXT

Building this home was a true labour of love for the original owners, centred on quality craftsmanship and family living. Positioned on a sunny corner section, it has undeniable street appeal. A path and steps lead to the front patio - a lovely spot to sit and enjoy the sunshine - before stepping inside to a welcoming central hallway. On one side, you'll find the living areas; on the other, the bedroom wing.

The kitchen is light and practical, flowing into the adjoining dining area. Bi-fold doors connect this space to the living room, creating an expansive open-plan area that has played host to many joyful family Christmas dinners. From the dining area, stairs lead up to a spacious second living room, a versatile space that's worked brilliantly over the years as a relaxing adult lounge, or a hangout for the teenagers.

All three bedrooms are fitted with built-in wardrobes, and one opens out to a deck. The tidy bathroom has a shower and vanity, while there is a separate toilet located off the laundry. Storage has been cleverly integrated throughout, and the home's meticulous upkeep since its 1960s build is always apparent.

Under the house is a basement garage which has room for two cars and there is off-street parking in front. Part of the section is securely fenced, ideal for children or pets. Living here also offers proximity to the thriving Green Island shopping centre, schools, and access to the motorway, taking you into either the city or Mosgiel.

This superb home is now ready for its next chapter, it offers the opportunity to make your own memories in a space that's been so well-loved. Get in touch today as we're happy to accommodate viewing times outside of open homes.

Deadline Sale closing at 4.00pm on Thursday 14 August 2025 (prior offers considered)

3 BED | 1 BATH | 1 CAR

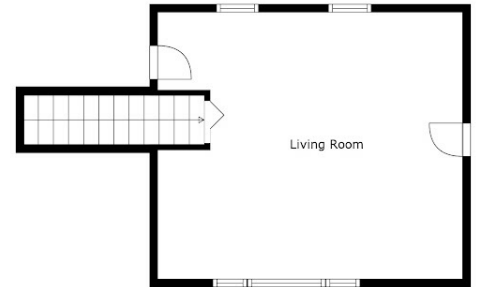
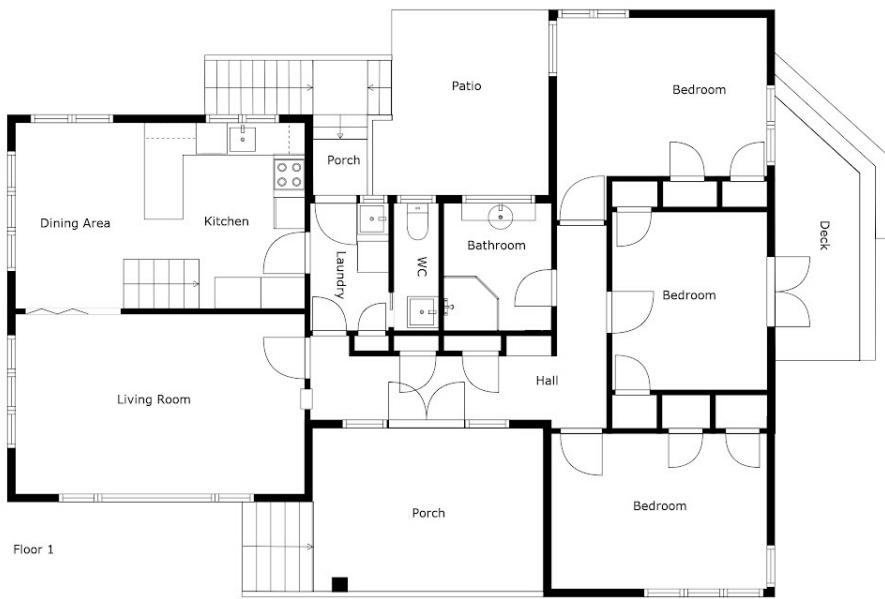
PRICE:  
\$600,000

OPEN FOR INSPECTION:  
N/A



**Shane and Julie Robinson**  
021953676

teamrobinson@thecollectiverealty.co.nz  
[www.thecollectiverealty.co.nz](http://www.thecollectiverealty.co.nz)



Sizes And Dimensions Are Approximate, Actual May Vary

Disclaimer: Please note this floor plan is for marketing purposes and is to be used as a guide only. All dimensions are estimates only and may not be exact measurements.