



**SOLD**

## LUXURY TRI-LEVEL TOWNHOUSE MINUTES FROM MEREWETHER BEACH

Experience the best of coastal living in this architect-designed Merewether townhouse, where thoughtful design meets timeless style.

Spread across three levels, this home features three spacious bedrooms, including a private top-floor master suite that feels like a retreat of its own.

The layout is ideal for entertaining, with two generous living areas seamlessly flowing into a modern kitchen and dining space. Enjoy outdoor gatherings in your private courtyard or on the rear deck and garden, perfect for hosting family and friends.

Impeccable finishes, including elegant Italian external tiles and beautifully laid marble tiles in the bathrooms, custom wardrobes and beautiful flooring, create a sense of understated luxury.

Situated just a short 5-minute drive from the vibrant Junction and approximately 3 minutes to the stunning Merewether Beach, this home offers a perfect blend of beachside convenience and comfortable living.

You'll be pleasantly surprised by the remarkably serene interior. Custom industrial-thickness glazing hushes the street, while all bedrooms are quietly positioned at the rear for total privacy.

Experience the best of both worlds: a fantastic property in a sought-after suburb at a realistic price.

Newly built and Torrens-titled, it's ideal for professionals, downsizers or families seeking space without the maintenance of a traditional house.

Don't miss out on this opportunity to live the beachside lifestyle you've always dreamed of.

Call now to schedule a viewing!

Features include:

~ Internal open-air courtyard with bright, breezy light

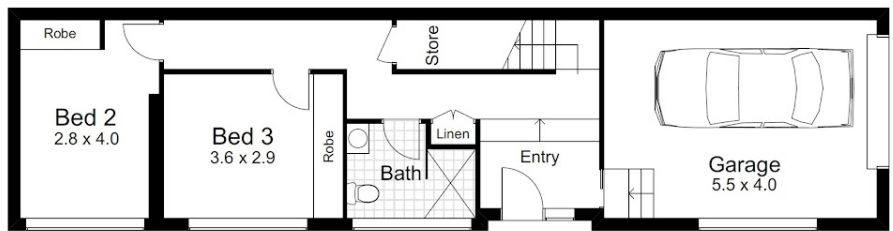
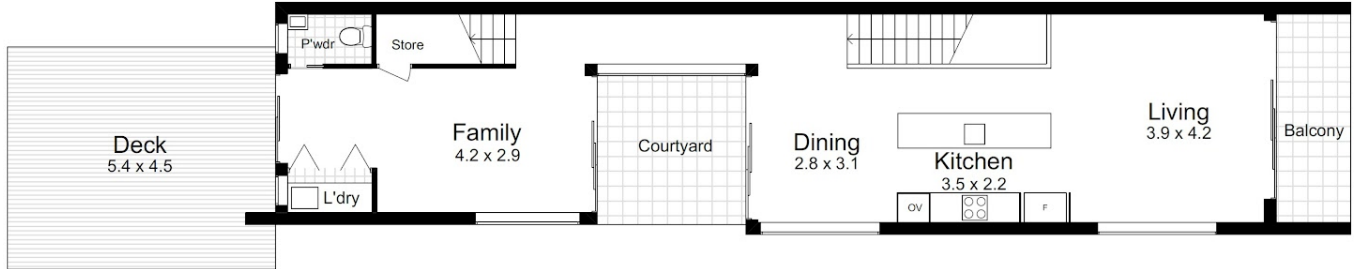
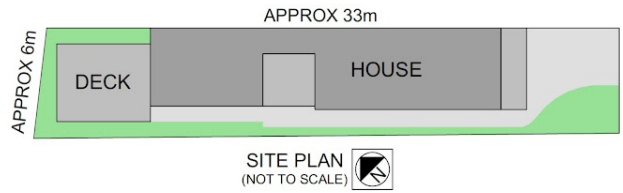
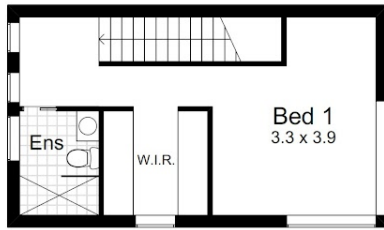
**3 BED | 2 BATH | 1 CAR**

**PRICE:**  
\$1,415,000

**OPEN FOR INSPECTION:**  
N/A



**Anne Alexander**  
**0416269637**  
anne.alexander@atrealty.com.au  
[www.atrealty.com.au](http://www.atrealty.com.au)



## 157A City Road, Merewether

House Internal Area Approx - 167m<sup>2</sup>



Anne Alexander | 0416 269 637 | [anne.alexander@atrealty.com.au](mailto:anne.alexander@atrealty.com.au)  
[atrealty.com.au/annealexander](http://atrealty.com.au/annealexander)

Disclaimer: Whilst every effort has been made to ensure the accuracy of these particulars, no warranty is given by the vendor or the agent as to their accuracy. Interested parties should not rely on these particulars as representations of fact but must instead satisfy themselves by inspection or otherwise.

Disclaimer: Please note this floor plan is for marketing purposes and is to be used as a guide only. All dimensions are estimates only and may not be exact measurements.