



FOR SALE

HERITAGE CHARM MEETS MODERN COMFORT

From the moment you arrive, this beautifully renovated home impresses with its character and warmth. The front verandah, with intricate fretwork, sets a welcoming tone.

Step inside to a wide hallway showcasing polished Rimu flooring, a neutral palette, and stylish lighting – details echoed throughout the rest of the home. Recent upgrades include double glazing, two heat pumps, and ceiling and underfloor insulation.

The formal lounge at the front is spacious and full of character, one of three rooms with ornate fireplaces.

All three bedrooms offer built-in storage. The generous primary suite fits a Californian king bed, opens out to a sunny deck, and includes a beautifully tiled ensuite. The family bathroom features quality tiling as well, a separate bath and shower, and a refined modern finish.

Positioned at the rear of the home, the open-plan kitchen, dining and living area offers privacy and flexibility. The kitchen stands out with bold black feature tiles, stone benchtops and an induction cooktop for enhanced cooking. There's plenty of space for both a dining table and lounge suite, while French doors connect the interior with the outdoors.

The fully fenced section is ideal for children and pets. Under-house storage and off-street parking add convenience.

And then there's the location - just steps from Columba College, close to other top schools, Roslyn village, Mercy hospital and the university. This address offers unbeatable convenience for families, professionals, and those who value being close to everything.

Don't miss your chance to view this exceptional property and embrace the lifestyle that awaits you.

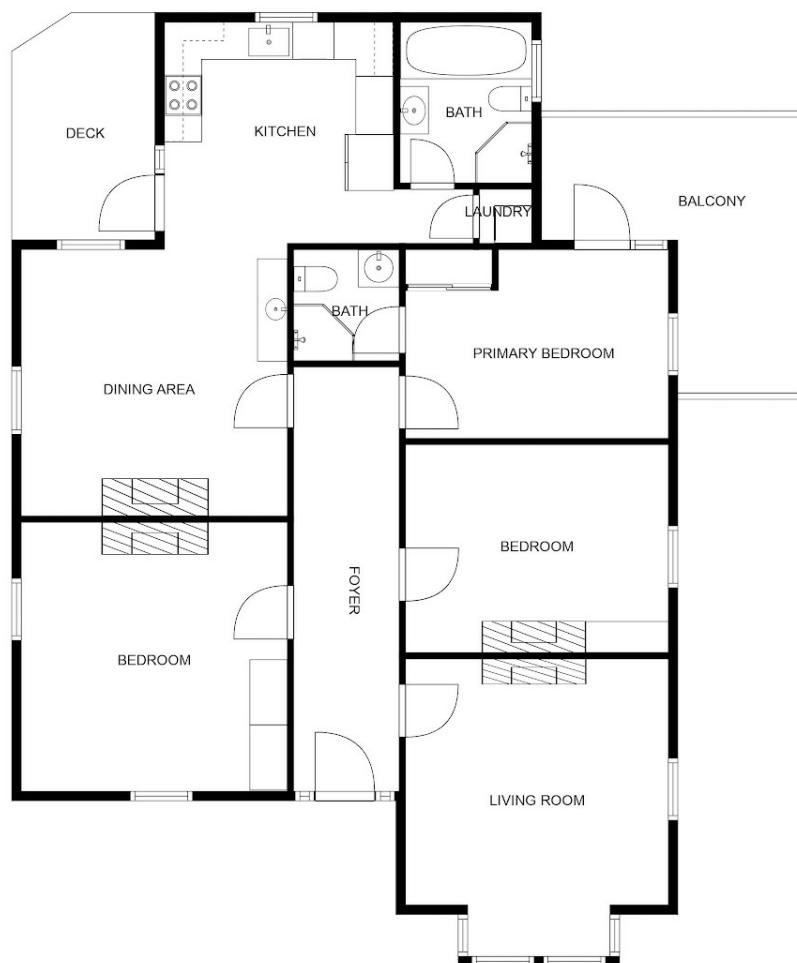
3 BED | 2 BATH | 0 CAR

PRICE:
Price by Negotiation

OPEN FOR INSPECTION:
N/A



Shane and Julie Robinson
021953676
teamrobinson@thecollectiverealty.co.nz
www.thecollectiverealty.co.nz



Disclaimer: Please note this floor plan is for marketing purposes and is to be used as a guide only. All dimensions are estimates only and may not be exact measurements.