

# SOLD

## LUXURY LIVING IN PRESTIGIOUS FAMILY DREAM HOME

### Welcome Home

Welcome to 50 Michelangelo Crescent, a breathtaking, modern residence that offers everything a family needs! This home has an impressive internal floor space that features 390sqm of internal living space. Every corner has been immaculately maintained to offer a truly elevated living experience on all accounts. Nestled on the upper side of a suburban enclave, this four-bedroom, two and a half-bathroom masterpiece has an additional study that can easily be converted into a fifth bedroom. Approaching the property via the extended driveway, prepare to be captivated by the home's immaculate presentation, striking grandeur and manicured grounds. This feature-packed property is now move-in ready and the ideal family residence for buyers seeking spacious comfort with a sense of interconnected living.

### Fast Facts

- Prestigious elevated 840 sqm block
- Impressive 390sqm internal floor space
- An immaculately maintained, two-storey, luxury home
- 4 bedrooms, 2.5 bathrooms, 3 lounge rooms, with additional study
- Can easily be converted into a 5 bedroom home!
- Huge master bedroom, with raised spa bath, double vanity and shower
- Ducted air conditioning and security screens throughout
- Undercover back patio and manicured gardens
- 2-car lockup garage, 2 off-street carports
- Close to local schools, parks, lifestyle precincts and major shopping centres
- Proximity to the local bus stop, M1 Motorway and Gateway Motorway

### Unveiling Glamour

Step inside the foyer and be awestruck by the abundance of space and style—two voids penetrating to the second story ceiling, a dramatic architectural statement befitting the grand staircase and cascading chandelier. Directly to your left, lives a huge study with garden-facing window, and on your right, a formal lounge and dining adjoined by an elegant archway. At the rear of the home, you'll discover an enormous open plan living space, featuring an integrated kitchen, lounge and casual dining scheme. The heart of the home lies in the well-equipped kitchen that's been thoughtfully designed as a social hub, with its large island bench the catalyst

4 BED | 2 BATH | 2 CAR

### PRICE:

\$1,610,000

### OPEN FOR INSPECTION:

N/A

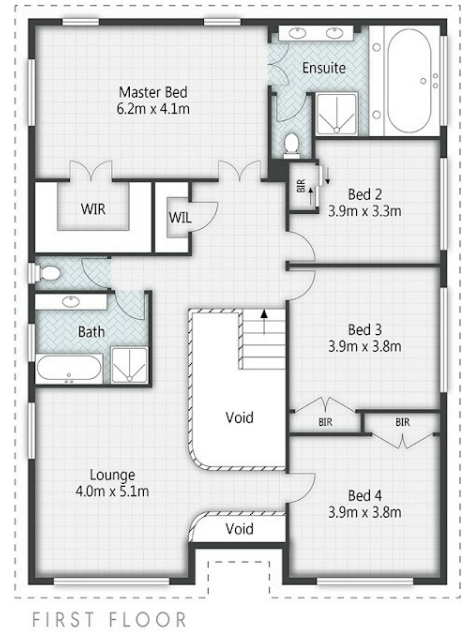


**Mitch Schenning**

**0407901342**

mitch.schenning@atrealty.com.au

[www.atrealty.com.au](http://www.atrealty.com.au)



50 Michelangelo Crescent, **MACKENZIE**

4 | 2 | 2 | 390m<sup>2</sup>

All dimensions are approximate; they are subject to errors and inaccuracies and no liability will be accepted. Plans are shown for marketing purposes only.

Disclaimer: Please note this floor plan is for marketing purposes and is to be used as a guide only. All dimensions are estimates only and may not be exact measurements.