



SOLD

FAMILY READY. FEATURE PACKED. PERFECTLY POSITIONED.

Spacious 4 Bedroom Corner Block with Side Access & Room to Grow

Welcome to a home that truly delivers on space, style, and smart design, all in one impressive package.

Nestled on a prized corner block with valuable side access, this thoughtfully designed 4 bedroom residence offers the perfect blend of functionality and lifestyle appeal. Whether you're upsizing, starting fresh or looking for a low-maintenance investment, this is a property that ticks every box.

Open Plan Comfort Meets Family Functionality

Step inside and be welcomed by generous open plan living that flows seamlessly from kitchen to lounge to dining. A multi purpose room offers the perfect second living area, home office, playroom or media zone, the choice is yours.

Gourmet Galley Kitchen

At the heart of the home is a well equipped kitchen featuring a stainless steel Westinghouse oven, gas cooktop, dishwasher, and walk-in pantry, ideal for the home chef and weekend entertainer.

A Floorplan That Makes Sense

The master suite boasts a private ensuite and walk-in robe, while the second bedroom also features a WIR, a rare and welcome bonus! The two remaining bedrooms are fitted with builtins and serviced by a stylish main bathroom with stone finishes.

Storage Galore

From a walk-in linen closet to double door laundry storage, this home is made for families that need space and know how to use it.

Room to Play, Room to Park, Room to Expand

The fully fenced yard provides ample room for kids and pets, while the side access allows flexibility for parking a boat, trailer, or caravan or even extending your outdoor entertaining space.

4 BED | 2 BATH | 2 CAR

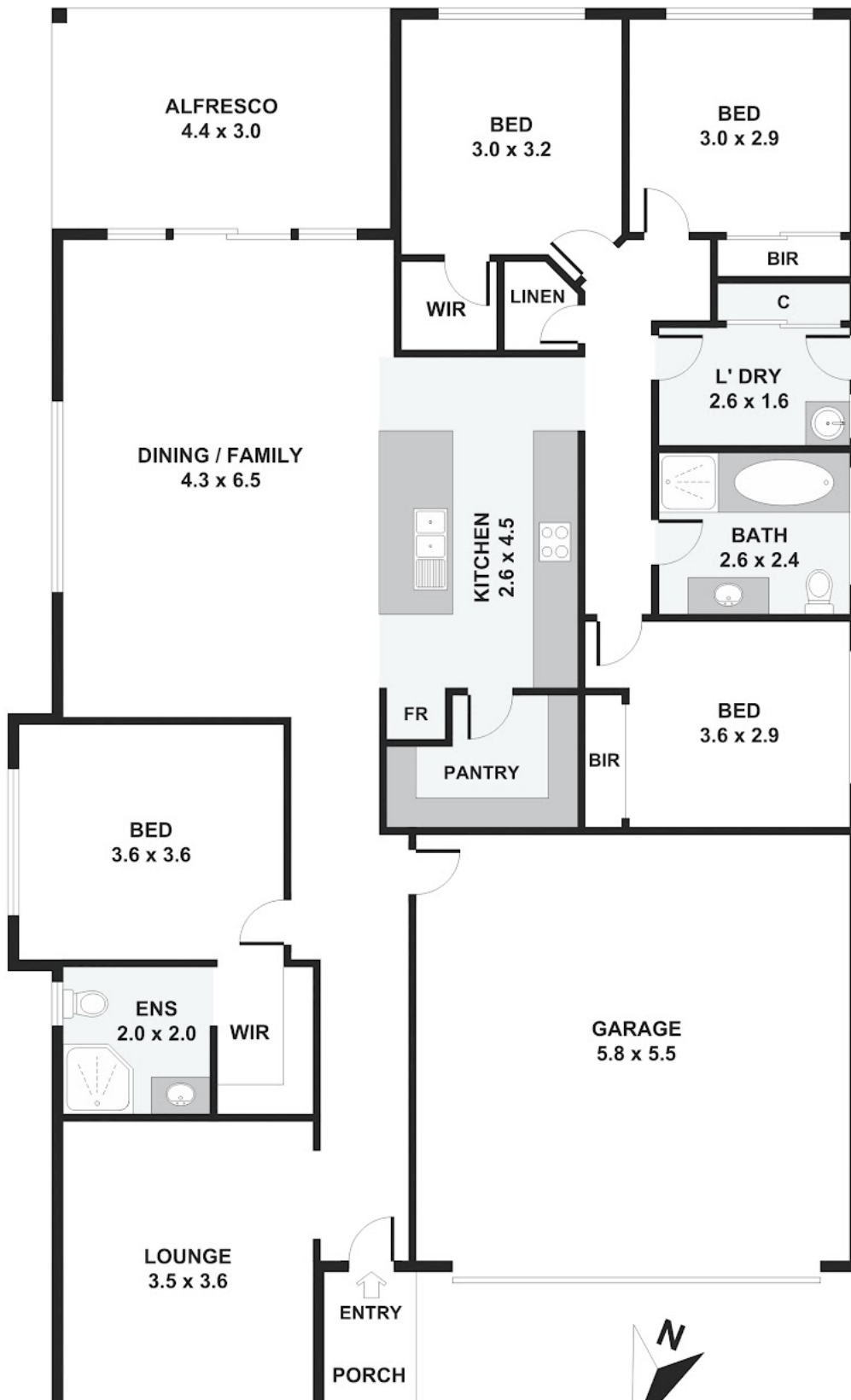
PRICE:
\$915,000

OPEN FOR INSPECTION:
N/A



Natasha Williams
0449281201
natasha@atrealty.com.au
soldindilly.com.au

1 Barrallier Avenue, Tahmoor



Disclaimer: Please note this floor plan is for marketing purposes and is to be used as a guide only. All dimensions are estimates only and may not be exact measurements.