

32 VINCENT AVENUE, ATHELSTONE, SA, 5076



**SOLD**

## FULLY RENOVATED FIVE-BEDROOM FAMILY SANCTUARY IN THE BEAUTIFUL ATHELSTONE FOOTHILLS

Set against the tranquil backdrop of the Athelstone foothills, this exceptional five-bedroom home delivers an inspiring combination of space, style and sophistication. Every element has been thoughtfully upgraded to create a modern family haven where comfort, functionality and contemporary living come together seamlessly.

From the moment you step inside, the home reveals a warm and inviting atmosphere enhanced by brand-new flooring, fresh interiors and an intelligent floorplan perfectly suited to growing families and buyers seeking multiple living options. With all major renovations completed – including new electricals, a new solar system and a new reverse-cycle air conditioning system, the home offers a true turnkey lifestyle with nothing left to spend.

The residence offers two well-separated living areas including the formal lounge or parents retreat while the expansive family dining/rumpus provides an ideal space for relaxation or formal entertaining, capturing pool views and welcomes natural light throughout the day.

At the heart of the home sits the stunning new kitchen, meticulously crafted with stone benchtops, sleek cabinetry and brand-new appliances. Thoughtfully designed for both style and practicality, it offers super functional preparation space and a seamless connection to the dining/rumpus zone via the on-trend servery.

A perfect extension to the kitchen is the ultra-modern butler's pantry/euro-style laundry combination with stone benchtops and lots of cupboard space.

With five bedrooms, the master with walk-in robes and ensuite, the home provides great flexibility for families of all sizes. Whether utilised as bedrooms, dedicated home office or guest accommodation, each room offers comfort, privacy and versatility.

The two contemporary bathrooms have been fully transformed with floor-to-ceiling tiles, premium fixtures and sophisticated features.

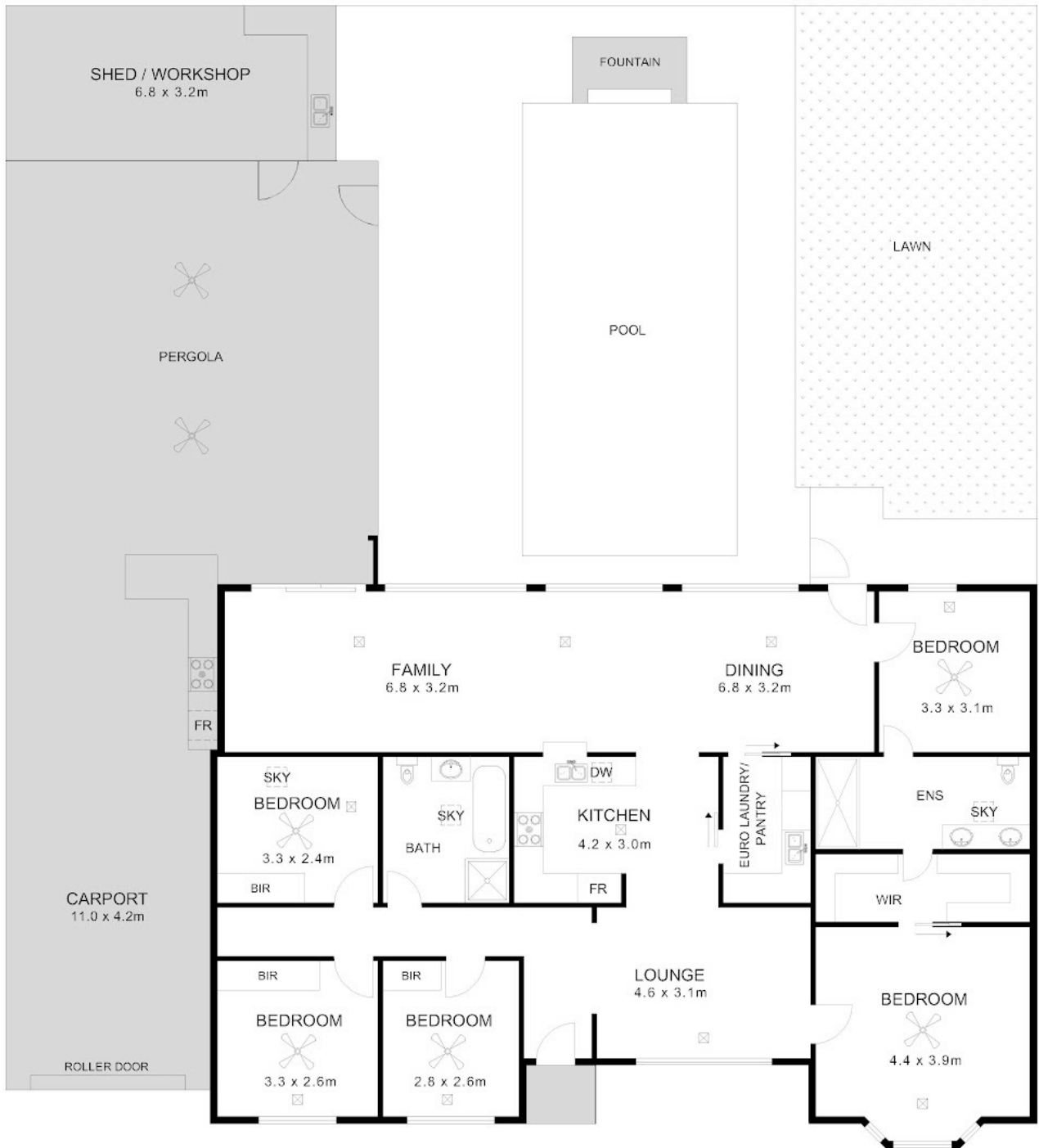
**5 BED | 2 BATH | 3 CAR**

**PRICE:**  
\$1,505,000

**OPEN FOR INSPECTION:**  
N/A



**Gerry & Kathy McGuinness**  
**0410531305**  
teammac@atrealty.com.au  
[www.atrealty.com.au](http://www.atrealty.com.au)  
RLA: 269823



Approx Gross  
 Living = 174m<sup>2</sup>  
 Carport = 44m<sup>2</sup>  
 Pergola = 67m<sup>2</sup>  
 Workshop = 22m<sup>2</sup>  
 Porch = 7m<sup>2</sup>

Disclaimer: Please note this floor plan is for marketing purposes and is to be used as a guide only. All dimensions are estimates only and may not be exact measurements.

## 32 Vincent Avenue Athelstone

For Illustrative purposes only. All measurements are approximate.  
 Andrew Waters Photography

**Gerry & Kathy McGuinness**  
 0410531305  
 teammac@atrealty.com.au  
[www.atrealty.com.au](http://www.atrealty.com.au)

